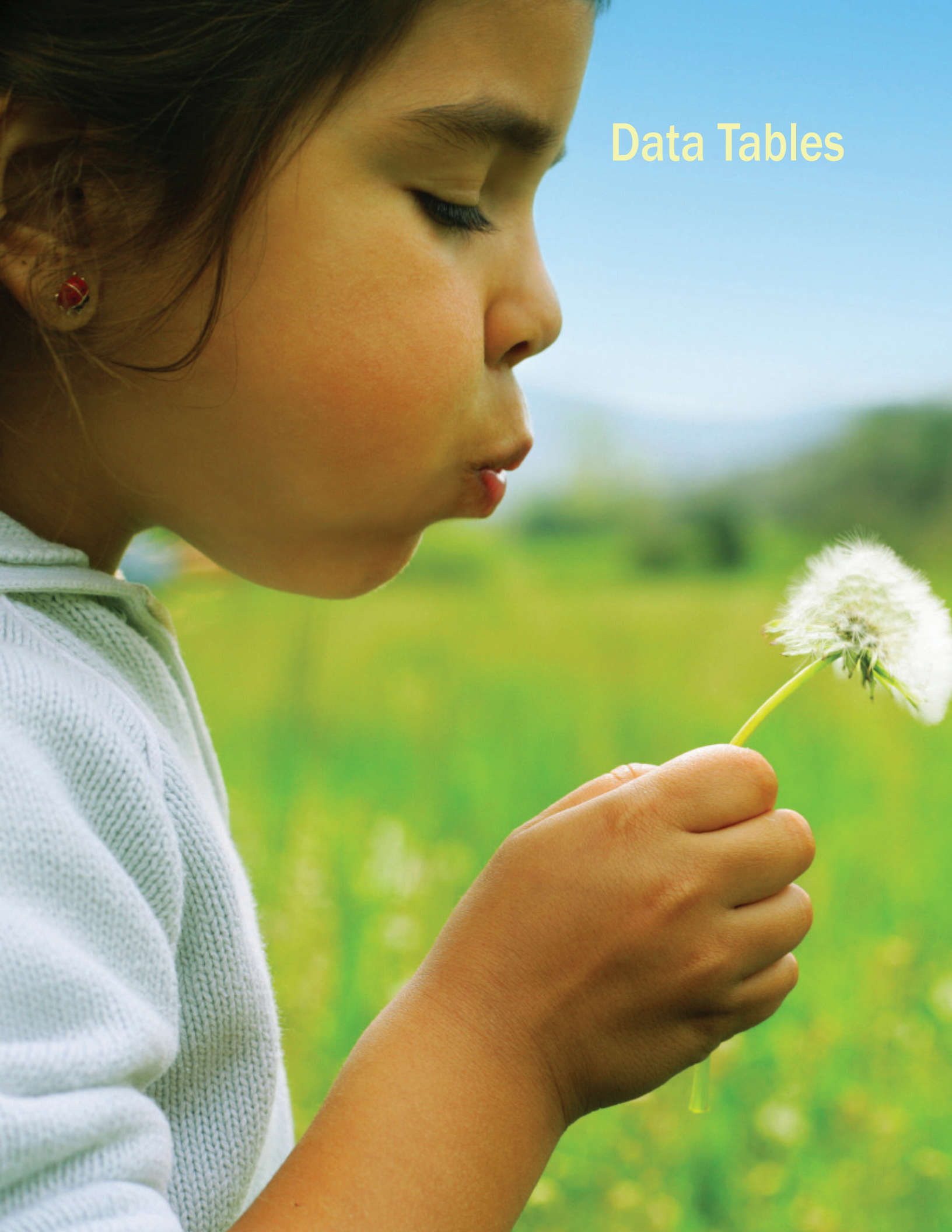


# Data Tables



## CHILD AND YOUTH POPULATION

county name	Ages 0-17		Ages 0-2		Ages 3-5		Ages 6-9		Ages 10-14	
	number of children and youth	% of all ages	number of children	% of all ages	number of children	% of all ages	number of children	% of all ages	number of children and youth	% of all ages
OKLAHOMA	899,507	24.9%	161,117	4.45%	150,116	4.15%	193,957	5.4%	239,404	6.6%
Adair	6,195	28.3%	1,116	5.1%	973	4.4%	1,237	5.6%	1,691	7.7%
Alfalfa	922	16.5%	152	2.7%	127	2.3%	202	3.6%	259	4.6%
Atoka	3,168	21.8%	513	3.5%	480	3.3%	690	4.8%	880	6.1%
Beaver	1,353	25.1%	220	4.1%	215	4.0%	254	4.7%	383	7.1%
Beckham	5,105	25.9%	1,002	5.1%	922	4.7%	1,110	5.6%	1,256	6.4%
Blaine	2,534	20.3%	473	3.8%	375	3.0%	507	4.1%	681	5.5%
Bryan	9,378	23.7%	1,615	4.1%	1,508	3.8%	2,068	5.2%	2,523	6.4%
Caddo	7,560	25.8%	1,238	4.2%	1,158	4.0%	1,469	5.0%	2,144	7.3%
Canadian	26,186	25.3%	4,430	4.3%	4,142	4.0%	5,611	5.4%	7,274	7.0%
Carter	11,901	25.0%	2,042	4.3%	1,985	4.2%	2,610	5.5%	3,195	6.7%
Cherokee	10,725	23.6%	1,873	4.1%	1,601	3.5%	2,372	5.2%	2,864	6.3%
Choctaw	3,658	24.4%	656	4.4%	595	4.0%	757	5.0%	920	6.1%
Cimarron	607	22.8%	85	3.2%	98	3.7%	130	4.9%	164	6.2%
Cleveland	53,092	22.5%	8,673	3.7%	8,531	3.6%	11,829	5.0%	14,625	6.2%
Coal	1,402	24.6%	208	3.6%	207	3.6%	300	5.3%	422	7.4%
Comanche	32,953	29.0%	6,248	5.5%	5,577	4.9%	7,223	6.3%	8,610	7.6%
Cotton	1,551	24.6%	223	3.5%	245	3.9%	348	5.5%	449	7.1%
Craig	3,259	21.4%	550	3.6%	517	3.4%	694	4.6%	883	5.8%
Creek	16,701	24.2%	2,628	3.8%	2,532	3.7%	3,576	5.2%	4,730	6.8%
Custer	5,922	22.7%	1,182	4.5%	1,114	4.3%	1,221	4.7%	1,464	5.6%
Delaware	9,011	22.3%	1,433	3.5%	1,252	3.1%	1,953	4.8%	2,643	6.5%
Dewey	905	20.9%	165	3.8%	148	3.4%	186	4.3%	235	5.4%
Ellis	831	21.2%	157	4.0%	144	3.7%	171	4.4%	217	5.5%
Garfield	14,594	25.3%	2,851	4.9%	2,564	4.4%	3,068	5.3%	3,718	6.4%
Garvin	6,386	23.5%	1,100	4.1%	1,048	3.9%	1,412	5.2%	1,751	6.5%
Grady	12,603	24.9%	2,044	4.0%	2,032	4.0%	2,774	5.5%	3,474	6.9%
Grant	928	20.6%	120	2.7%	127	2.8%	187	4.2%	272	6.0%
Greer	1,075	18.5%	197	3.4%	187	3.2%	228	3.9%	272	4.7%
Harmon	671	23.7%	124	4.4%	91	3.2%	129	4.5%	177	6.2%
Harper	709	21.8%	156	4.8%	115	3.5%	136	4.2%	188	5.8%
Haskell	2,942	24.4%	483	4.0%	484	4.0%	640	5.3%	829	6.9%
Hughes	3,002	21.9%	530	3.9%	450	3.3%	596	4.4%	842	6.2%
Jackson	7,550	29.3%	1,319	5.1%	1,242	4.8%	1,666	6.5%	2,049	7.9%
Jefferson	1,449	23.1%	246	3.9%	214	3.4%	331	5.3%	393	6.3%
Johnston	2,499	24.0%	452	4.3%	393	3.8%	510	4.9%	706	6.8%
Kay	11,516	25.2%	2,014	4.4%	1,865	4.1%	2,416	5.3%	3,197	7.0%
Kingfisher	3,492	24.4%	617	4.3%	576	4.0%	755	5.3%	910	6.4%
Kiowa	2,108	22.3%	330	3.5%	348	3.7%	474	5.0%	549	5.8%

Number of Children Under Age 18: Total and Percentage of All Ages  
 Number of Children and Youth Under Age 20: Age Ranges by Total and Percentage of All Ages  
 Oklahoma and counties: 2007

Ages 15-17		Ages 18-19	
number of youth	% of all ages	number of youth	% of all ages
154,913	4.3%	98,981	2.7%
1,178	5.4%	578	2.6%
182	3.3%	103	1.8%
605	4.2%	305	2.1%
281	5.2%	128	2.4%
815	4.1%	432	2.2%
498	4.0%	326	2.6%
1,664	4.2%	1,308	3.3%
1,551	5.3%	838	2.9%
4,729	4.6%	2,559	2.5%
2,069	4.3%	926	1.9%
2,015	4.4%	1,846	4.1%
730	4.9%	352	2.3%
130	4.9%	70	2.6%
9,434	4.0%	9,147	3.9%
265	4.6%	151	2.6%
5,295	4.7%	4,552	4.0%
286	4.5%	148	2.3%
615	4.0%	385	2.5%
3,235	4.7%	1,676	2.4%
941	3.6%	1,179	4.5%
1,730	4.3%	826	2.0%
171	3.9%	99	2.3%
142	3.6%	68	1.7%
2,393	4.2%	1,221	2.1%
1,075	4.0%	569	2.1%
2,279	4.5%	1,307	2.6%
222	4.9%	107	2.4%
191	3.3%	161	2.8%
150	5.3%	75	2.6%
114	3.5%	67	2.1%
506	4.2%	275	2.3%
584	4.3%	264	1.9%
1,274	4.9%	729	2.8%
265	4.2%	146	2.3%
438	4.2%	354	3.4%
2,024	4.4%	1,183	2.6%
634	4.4%	318	2.2%
407	4.3%	219	2.3%

## CHILD AND YOUTH POPULATION (continued)

county name	Ages 0-17		Ages 0-2		Ages 3-5		Ages 6-9		Ages 10-14	
	number of children and youth	% of all ages	number of children	% of all ages	number of children	% of all ages	number of children	% of all ages	number of children and youth	% of all ages
Latimer	2,385	22.7%	347	3.3%	314	3.0%	528	5.0%	697	6.6%
Le Flore	12,389	24.9%	2,174	4.4%	2,102	4.2%	2,724	5.5%	3,277	6.6%
Lincoln	7,918	24.5%	1,248	3.9%	1,171	3.6%	1,629	5.0%	2,262	7.0%
Logan	8,817	24.2%	1,447	4.0%	1,386	3.8%	1,875	5.1%	2,379	6.5%
Love	2,166	23.8%	369	4.0%	352	3.9%	451	4.9%	579	6.4%
McClain	7,809	24.5%	1,333	4.2%	1,310	4.1%	1,694	5.3%	2,143	6.7%
McCurtain	8,657	25.8%	1,450	4.3%	1,312	3.9%	1,869	5.6%	2,371	7.1%
McIntosh	4,147	21.0%	674	3.4%	640	3.2%	879	4.5%	1,134	5.8%
Major	1,576	21.9%	272	3.8%	247	3.4%	291	4.0%	447	6.2%
Marshall	3,556	24.0%	660	4.5%	583	3.9%	771	5.2%	930	6.3%
Mayes	9,524	24.0%	1,594	4.0%	1,376	3.5%	2,032	5.1%	2,682	6.8%
Murray	2,850	22.4%	486	3.8%	445	3.5%	635	5.0%	776	6.1%
Muskogee	17,054	24.0%	3,047	4.3%	2,724	3.8%	3,578	5.0%	4,752	6.7%
Noble	2,588	23.3%	401	3.6%	436	3.9%	573	5.2%	699	6.3%
Nowata	2,491	23.2%	396	3.7%	332	3.1%	546	5.1%	723	6.7%
Okfuskee	2,428	21.6%	457	4.1%	333	3.0%	480	4.3%	716	6.4%
Oklahoma	185,702	26.5%	36,939	5.3%	34,167	4.9%	40,092	5.7%	46,203	6.6%
Okmulgee	9,650	24.6%	1,641	4.2%	1,449	3.7%	2,033	5.2%	2,709	6.9%
Osage	10,120	22.2%	1,416	3.1%	1,399	3.1%	2,233	4.9%	3,032	6.7%
Ottawa	7,665	23.6%	1,302	4.0%	1,068	3.3%	1,639	5.0%	2,100	6.5%
Pawnee	3,910	23.8%	636	3.9%	584	3.6%	807	4.9%	1,074	6.5%
Payne	14,698	18.4%	2,740	3.4%	2,606	3.3%	3,268	4.1%	3,719	4.7%
Pittsburg	9,711	21.7%	1,678	3.8%	1,482	3.3%	1,963	4.4%	2,706	6.1%
Pontotoc	8,590	23.5%	1,563	4.3%	1,427	3.9%	1,844	5.0%	2,243	6.1%
Pottawatomie	16,662	24.1%	2,794	4.0%	2,591	3.8%	3,703	5.4%	4,573	6.6%
Pushmataha	2,670	22.9%	435	3.7%	378	3.2%	566	4.9%	756	6.5%
Roger Mills	750	22.7%	144	4.4%	138	4.2%	148	4.5%	195	5.9%
Rogers	20,588	24.8%	2,978	3.6%	3,027	3.6%	4,485	5.4%	6,143	7.4%
Seminole	5,962	24.7%	1,017	4.2%	1,013	4.2%	1,246	5.2%	1,596	6.6%
Sequoyah	10,121	24.7%	1,645	4.0%	1,476	3.6%	2,154	5.3%	2,967	7.2%
Stephens	10,198	23.5%	1,719	4.0%	1,648	3.8%	2,211	5.1%	2,779	6.4%
Texas	5,934	29.6%	1,119	5.6%	1,126	5.6%	1,358	6.8%	1,423	7.1%
Tillman	2,049	25.1%	372	4.6%	289	3.5%	400	4.9%	545	6.7%
Tulsa	154,409	26.4%	29,114	5.0%	27,173	4.6%	33,411	5.7%	39,821	6.8%
Wagoner	17,091	25.4%	2,587	3.8%	2,564	3.8%	3,807	5.7%	4,951	7.4%
Washington	11,211	22.5%	1,823	3.7%	1,706	3.4%	2,293	4.6%	3,144	6.3%
Washita	2,773	23.8%	509	4.4%	442	3.8%	582	5.0%	725	6.2%
Woods	1,544	18.6%	271	3.3%	262	3.1%	324	3.9%	395	4.7%
Woodward	4,701	24.1%	855	4.4%	856	4.4%	995	5.1%	1,199	6.1%

Number of Children Under Age 18: Total and Percentage of All Ages  
 Number of Children and Youth Under Age 20: Age Ranges by Total and Percentage of All Ages  
 Oklahoma and counties: 2007



Ages 15-17		Ages 18-19	
number of youth	% of all ages	number of youth	% of all ages
499	4.7%	511	4.9%
2,112	4.2%	1,247	2.5%
1,608	5.0%	767	2.4%
1,730	4.7%	1,079	3.0%
415	4.6%	200	2.2%
1,329	4.2%	805	2.5%
1,655	4.9%	822	2.5%
820	4.2%	421	2.1%
319	4.4%	151	2.1%
612	4.1%	302	2.0%
1,840	4.6%	897	2.3%
508	4.0%	219	1.7%
2,953	4.2%	1,719	2.4%
479	4.3%	263	2.4%
494	4.6%	269	2.5%
442	3.9%	235	2.1%
28,301	4.0%	17,354	2.5%
1,818	4.6%	1,080	2.7%
2,040	4.5%	1,135	2.5%
1,556	4.8%	1,165	3.6%
809	4.9%	391	2.4%
2,365	3.0%	5,406	6.8%
1,882	4.2%	967	2.2%
1,513	4.1%	1,202	3.3%
3,001	4.3%	2,142	3.1%
535	4.6%	283	2.4%
125	3.8%	74	2.2%
3,955	4.8%	2,008	2.4%
1,090	4.5%	649	2.7%
1,879	4.6%	956	2.3%
1,841	4.2%	927	2.1%
908	4.5%	608	3.0%
443	5.4%	212	2.6%
24,890	4.3%	13,748	2.3%
3,182	4.7%	1,527	2.3%
2,245	4.5%	1,115	2.2%
515	4.4%	266	2.3%
292	3.5%	377	4.5%
796	4.1%	485	2.5%

## LOW AND VERY LOW BIRTHWEIGHT INFANTS

county name	1994-1996 Low Birthweight (<5 ½ lbs)			1994-1996 Very Low Birthweight (<3lbs. 5 oz.)			2005-2007 Low Birthweight (<5 ½ lbs.)					2005-2007 Very Low Birthweight (<3 lbs. 5 oz.)	
	three year number	average annual number	three year %	three year number	average annual number	three year %	three year number	average annual number	three year %	three year rank	change over time	three year number	average annual number
OKLAHOMA	9,707	3,236	7.1%	1,584	528	1.2%	12,335	4,112	7.7%		-8.4%	2,407	802
Adair	59	20	5.8%	12	4	1.2%	88	29	7.7%	44	-33.6%	17	6
Alfalfa	14	5	8.7%	4	1	2.5%	13	4	8.5%	63	2.3%	0	0
Atoka	33	11	7.4%	1	0	0.2%	49	16	9.7%	70	-30.3%	9	3
Beaver	9	3	5.1%	2	1	1.1%	13	4	6.5%	17	-26.5%	3	1
Beckham	47	16	6.6%	6	2	0.8%	83	28	8.2%	57	-24.1%	12	4
Blaine	28	9	6.2%	9	3	2.0%	51	17	10.5%	77	-70.1%	5	2
Bryan	91	30	7.0%	8	3	0.6%	137	46	8.1%	55	-17.0%	23	8
Caddo	82	27	6.7%	6	2	0.5%	100	33	7.9%	51	-17.4%	18	6
Canadian	142	47	4.7%	13	4	0.4%	287	96	6.6%	22	-39.6%	66	22
Carter	139	46	7.8%	17	6	1.0%	207	69	10.1%	73	-28.8%	29	10
Cherokee	108	36	6.8%	15	5	0.9%	139	46	7.1%	33	-5.1%	25	8
Choctaw	49	16	8.8%	6	2	1.1%	69	23	10.0%	tie for 71	-14.2%	11	4
Cimarron	9	3	9.5%	1	0	1.1%	5	2	5.9%	11	37.9%	0	0
Cleveland	399	133	6.0%	62	21	0.9%	595	198	7.0%	27	-17.3%	99	33
Coal	15	5	6.5%	4	1	1.7%	18	6	8.4%	61	-28.4%	3	1
Comanche	476	159	7.8%	90	30	1.5%	478	159	8.0%	53	-3.4%	84	28
Cotton	14	5	5.7%	3	1	1.2%	21	7	9.3%	69	-63.9%	5	2
Craig	35	12	7.0%	10	3	2.0%	50	17	9.0%	68	-28.3%	11	4
Creek	174	58	6.7%	27	9	1.0%	191	64	7.3%	36	-9.5%	33	11
Custer	58	19	5.7%	4	1	0.4%	86	29	7.1%	29	-24.3%	16	5
Delaware	101	34	8.4%	20	7	1.7%	106	35	7.4%	38	11.7%	19	6
Dewey	8	3	5.5%	3	1	2.1%	8	3	4.4%	2	19.3%	1	0
Ellis	7	2	5.4%	0	0	0.0%	8	3	5.4%	9	1.1%	0	0
Garfield	169	56	7.3%	26	9	1.1%	211	70	7.4%	37	-0.4%	42	14
Garvin	72	24	7.1%	8	3	0.8%	95	32	8.1%	56	-14.5%	9	3
Grady	135	45	7.8%	22	7	1.3%	178	59	8.9%	67	-14.6%	33	11
Grant	6	2	4.0%	0	0	0.0%	6	2	4.7%	3	-15.5%	2	1
Greer	14	5	7.4%	3	1	1.6%	19	6	10.2%	74	-37.9%	9	3
Harmon	13	4	9.8%	1	0	0.8%	12	4	8.6%	64	13.0%	1	0
Harper	2	1	2.0%	0	0	0.0%	11	4	7.1%	32	-247.7%	0	0
Haskell	30	10	6.7%	3	1	0.7%	29	10	5.6%	10	16.5%	9	3
Hughes	21	7	4.6%	3	1	0.7%	36	12	6.8%	26	-49.4%	11	4
Jackson	103	34	6.1%	13	4	0.8%	138	46	10.0%	tie for 71	-63.7%	25	8
Jefferson	11	4	5.7%	3	1	1.6%	20	7	7.7%	45	-34.8%	3	1
Johnston	31	10	8.0%	3	1	0.8%	34	11	7.0%	28	12.3%	10	3
Kay	116	39	5.6%	21	7	1.0%	144	48	6.8%	25	-21.4%	23	8
Kingfisher	23	8	4.6%	2	1	0.4%	38	13	6.0%	13	-29.8%	7	2
Kiowa	30	10	8.6%	3	1	0.9%	34	11	10.4%	75	-20.3%	5	2

2005-2007 Very Low Birthweight (<3 lbs. 5 oz.)		
three year %	three year rank	change over time
1.5%		-29.6%
1.5%	53	-26.9%
0.0%	tie for 1	100.0%
1.8%	65	-689.5%
1.5%	54	-31.3%
1.2%	28	-40.5%
1.0%	15	48.1%
1.4%	40	-123.4%
1.4%	46	-188.9%
1.5%	55	-250.8%
1.4%	45	-47.5%
1.3%	34	-36.1%
1.6%	59	-48.7%
0.0%	tie for 1	100.0%
1.2%	26	-25.7%
1.4%	42	19.8%
1.4%	43	3.9%
2.2%	73	-82.2%
2.0%	69	1.2%
1.3%	33	-21.9%
1.3%	36	-235.3%
1.3%	37	20.1%
0.6%	6	73.1%
0.0%	tie for 1	###
1.5%	51	-29.9%
0.8%	10	2.4%
1.7%	61	-30.4%
1.6%	57	###
4.8%	77	-204.8%
0.7%	9	5.7%
0.0%	tie for 1	###
1.7%	63	-159.0%
2.1%	71	-219.5%
1.8%	67	-134.9%
1.2%	24	25.9%
2.1%	70	-166.7%
1.1%	18	-7.1%
1.1%	tie for 22	-175.0%
1.5%	56	-76.9%

Three-Year Number, Average Annual Number and Percent of Infants Born Weighing Less than 5 ½ Pounds (Low Birthweight)

Three-Year Number, Average Annual Number and Percent of Infants Born Weighing Less than 3 Pounds, 5 ounces (Very Low Birthweight)

Oklahoma & Counties: 1994-1996 & 2005-2007.

### = zero base, cannot calculate change; State totals may not equal sum of all counties due to births for which county is not known..

## LOW AND VERY LOW BIRTHWEIGHT INFANTS (continued)

county name	1994-1996 Low Birthweight (<5 ½ lbs)			1994-1996 Very Low Birthweight (<3lbs. 5 oz.)			2005-2007 Low Birthweight (<5 ½ lbs.)					2005-2007 Very Low Birthweight (<3 lbs. 5 oz.)	
	three year number	average annual number	three year %	three year number	average annual number	three year %	three year number	average annual number	three year %	three year rank	change over time	three year number	average annual number
Latimer	12	4	3.2%	2	1	0.5%	17	6	4.9%	5	-51.1%	5	2
Le Flore	118	39	6.3%	20	7	1.1%	147	49	6.6%	18	-4.9%	26	9
Lincoln	61	20	5.6%	12	4	1.1%	92	31	7.5%	40	-33.8%	16	5
Logan	82	27	8.2%	10	3	1.0%	92	31	6.6%	23	19.0%	17	6
Love	17	6	5.9%	1	0	0.3%	39	13	10.5%	76	-77.7%	11	4
McClain	45	15	4.8%	4	1	0.4%	100	33	7.9%	48	-63.0%	20	7
McCurtain	112	37	7.2%	12	4	0.8%	117	39	7.9%	49	-8.9%	22	7
McIntosh	42	14	6.6%	5	2	0.8%	57	19	8.7%	66	-32.0%	16	5
Major	5	2	2.3%	1	0	0.5%	17	6	6.6%	20	-186.0%	5	2
Marshall	39	13	8.5%	5	2	1.1%	40	13	6.1%	14	27.5%	7	2
Mayes	111	37	7.4%	22	7	1.5%	113	38	6.6%	19	11.5%	19	6
Murray	33	11	7.9%	7	2	1.7%	43	14	8.4%	62	-7.0%	6	2
Muskogee	226	75	7.6%	40	13	1.3%	263	88	8.3%	60	-10.4%	43	14
Noble	30	10	7.2%	1	0	0.2%	21	7	5.1%	6	29.0%	2	1
Nowata	31	10	8.4%	6	2	1.6%	16	5	4.2%	1	49.6%	3	1
Okfuskee	41	14	10.0%	8	3	2.0%	32	11	7.3%	35	27.1%	12	4
Oklahoma	2,432	811	8.1%	411	137	1.4%	3,039	1,013	8.3%	59	-3.2%	601	200
Okmulgee	109	36	7.4%	20	7	1.4%	129	43	7.9%	50	-5.9%	18	6
Osage	89	30	7.5%	12	4	1.0%	112	37	8.0%	54	-6.9%	12	4
Ottawa	68	23	5.8%	12	4	1.0%	107	36	7.5%	42	-28.8%	25	8
Pawnee	35	12	6.0%	6	2	1.0%	47	16	7.4%	39	-23.7%	6	2
Payne	110	37	4.9%	18	6	0.8%	161	54	6.0%	12	-22.0%	26	9
Pittsburgh	90	30	6.1%	13	4	0.9%	145	48	8.6%	65	-40.7%	18	6
Pontotoc	93	31	6.7%	9	3	0.7%	132	44	8.3%	58	-23.8%	19	6
Pottawatomie	167	56	6.9%	19	6	0.8%	191	64	6.7%	24	3.4%	41	14
Pushmataha	8	3	2.0%	1	0	0.2%	34	11	7.8%	46	-292.0%	3	1
Roger Mills	10	3	9.5%	2	1	1.9%	8	3	5.1%	7	46.2%	1	0
Rogers	164	55	6.6%	29	10	1.2%	186	62	6.3%	16	4.9%	43	14
Seminole	78	26	7.6%	10	3	1.0%	73	24	7.1%	31	6.3%	22	7
Sequoyah	97	32	6.2%	22	7	1.4%	137	46	8.0%	52	-28.6%	29	10
Stephens	109	36	7.5%	12	4	0.8%	105	35	6.2%	15	17.4%	23	8
Texas	36	12	5.1%	10	3	1.4%	75	25	6.6%	21	-28.7%	14	5
Tillman	29	10	7.3%	4	1	1.0%	28	9	7.8%	47	-7.0%	4	1
Tulsa	1,778	593	7.3%	336	112	1.4%	2,190	730	7.6%	43	-4.6%	514	171
Wagoner	132	44	6.8%	28	9	1.4%	189	63	7.5%	41	-9.9%	32	11
Washington	106	35	6.8%	8	3	0.5%	130	43	7.1%	30	-4.3%	26	9
Washita	25	8	6.8%	7	2	1.9%	29	10	5.3%	8	22.5%	6	2
Woods	18	6	7.0%	0	0	0.0	13	4	4.7%	4	33.5%	4	1
Woodward	46	15	6.5%	5	2	0.7%	62	21	7.2%	34	-10.3%	12	4



2005-2007 Very Low Birthweight (<3 lbs. 5 oz.)		
three year %	three year rank	change over time
1.4%	49	-166.6%
1.2%	25	-9.5%
1.3%	35	-18.3%
1.2%	30	-22.8%
2.9%	76	-752.3%
1.6%	58	-266.7%
1.5%	52	-91.1%
2.4%	74	-211.2%
1.9%	68	-320.5%
1.1%	17	1.1%
1.1%	21	24.9%
1.2%	27	29.6%
1.4%	39	-2.0%
0.5%	5	-102.9%
0.8%	11	51.2%
2.7%	75	-40.1%
1.6%	60	-20.7%
1.1%	19	19.5%
0.9%	12	15.0%
1.8%	64	-70.5%
0.9%	13	7.9%
1.0%	14	-20.4%
1.1%	16	-20.9%
1.2%	29	-84.1%
1.4%	47	-82.3%
0.7%	8	-176.7%
0.6%	7	66.3%
1.5%	50	-24.3%
2.1%	72	-120.2%
1.7%	62	-20.0%
1.4%	38	-64.4%
1.2%	31	13.5%
1.1%	tie for 22	-10.8%
1.8%	66	-29.9%
1.3%	32	12.3%
1.4%	44	-176.3%
1.1%	20	42.7%
1.4%	48	###
1.4%	41	-96.4%

## BIRTHS TO TEENS

county name	1994-1996 Ages 15-17			1994-1996 Ages 18-19			1994-1996 Ages 15-19			2005-2007 Ages 15-17				
	three year number	average annual number	three year rate/1000	three year number	average annual number	three year rate/1000	three year number	average annual number	three year rate/1000	three year number	average annual number	three year rate/1000	three year rank	change over time
OKLAHOMA	8,323	2,774	38.1	14,506	4,835	103.1	22,829	7,610	63.6	6,594	2,198	29.5		22.6%
Adair	99	33	63.5	160	53	189.6	259	86	107.7	66	22	39.2	60	38.2%
Alfalfa	6	2	14.7	13	4	132.7	19	6	37.5	3	1	9.6	3	34.8%
Atoka	36	12	37.8	54	18	114.9	90	30	63.2	24	8	29.7	34	21.4%
Beaver	10	3	21.4	21	7	142.9	31	10	50.4	4	1	10.1	4	53.0%
Beckham	37	12	27.1	93	31	134.6	130	43	63.2	48	16	39.2	59	-44.6%
Blaine	25	8	33.4	61	20	156.4	86	29	75.5	26	9	34.1	47	-2.1%
Bryan	77	26	33.8	187	62	108.0	264	88	65.8	99	33	41.4	65	-22.5%
Caddo	110	37	51.6	151	50	134.7	261	87	80.2	74	25	32.4	40	37.3%
Canadian	146	49	24.4	213	71	71.7	359	120	40.1	112	37	16.3	11	33.2%
Carter	140	47	43.6	252	84	161.0	392	131	82.0	92	31	30.4	36	30.2%
Cherokee	111	37	44.0	203	68	103.6	314	105	70.0	101	34	35.8	50	18.7%
Choctaw	51	17	46.1	86	29	155.5	137	46	82.6	42	14	39.0	58	15.4%
Cimarron	7	2	29.3	10	3	102.0	17	6	50.4	4	1	17.4	12	40.6%
Cleveland	274	91	21.8	493	164	41.9	767	256	31.5	158	53	11.7	5	46.6%
Coal	15	5	30.9	34	11	139.9	49	16	67.2	18	6	45.1	70	-46.2%
Comanche	324	108	44.5	683	228	141.8	1,007	336	83.2	194	65	26.1	25	41.4%
Cotton	18	6	35.9	30	10	131.6	48	16	65.8	11	4	28.7	31	20.1%
Craig	29	10	32.0	65	22	138.0	94	31	68.2	25	8	26.5	28	17.2%
Creek	179	60	36.9	300	100	128.7	479	160	66.7	117	39	25.2	24	31.7%
Custer	53	18	34.4	94	31	49.3	147	49	42.6	54	18	38.7	56	-12.4%
Delaware	82	27	38.1	171	57	158.6	253	84	78.3	71	24	28.8	32	24.3%
Dewey	8	3	22.7	17	6	146.6	25	8	53.4	7	2	26.1	26	-14.9%
Ellis	13	4	42.9	14	5	134.6	27	9	66.3	5	2	23.9	21	44.2%
Garfield	136	45	38.1	213	71	110.2	349	116	63.4	94	31	26.8	29	29.7%
Garvin	74	25	40.0	121	40	131.0	195	65	70.3	53	18	31.4	38	21.4%
Grady	108	36	34.3	223	74	121.0	331	110	66.3	65	22	19.9	15	42.1%
Grant	2	1	5.3	15	5	119.0	17	6	33.9	2	1	5.7	1	-6.5%
Greer	12	4	32.1	26	9	121.5	38	13	64.6	19	6	65.1	76	-102.8%
Harmon	10	3	44.1	23	8	184.0	33	11	93.8	13	4	66.3	77	-50.6%
Harper	6	2	23.3	10	3	111.1	16	5	46.1	8	3	44.9	69	-92.5%
Haskell	35	12	42.2	66	22	175.1	101	34	83.7	33	11	44.6	68	-5.8%
Hughes	41	14	43.5	59	20	139.5	100	33	73.3	38	13	48.0	73	-10.2%
Jackson	98	33	47.4	174	58	126.0	272	91	78.9	67	22	37.5	54	20.9%
Jefferson	12	4	23.2	23	8	108.0	35	12	47.9	18	6	45.5	71	-95.8%
Johnston	28	9	39.3	39	13	68.5	67	22	52.3	20	7	32.9	41	16.1%
Kay	125	42	42.8	278	93	157.9	403	134	86.0	103	34	35.9	51	16.1%
Kingfisher	25	8	27.3	43	14	100.5	68	23	50.6	22	7	24.0	22	12.3%
Kiowa	32	11	40.0	39	13	123.8	71	24	63.6	24	8	40.8	64	-2.2%

2005-2007 Ages 18-19					2005-2007 Ages 15-19				
three year number	average annual number	three year rate/1000	three year rank	change over time	three year number	average annual number	three year rate/1000	three year rank	change over time
14,836	4,945	102.8		0.2%	21,430	7,143	58.3		8.3%
150	50	177.3	73	6.5%	216	72	85.4	68	20.7%
8	3	51.6	4	61.1%	11	4	23.5	2	37.4%
65	22	153.3	62	-33.4%	89	30	72.2	54	-14.2%
12	4	70.6	10	50.6%	16	5	28.2	5	44.1%
116	39	186.5	75	-38.6%	164	55	88.7	71	-40.5%
54	18	145.6	58	6.9%	80	27	70.5	50	6.6%
194	65	105.0	25	2.8%	293	98	69.1	45	-5.0%
149	50	128.1	44	4.9%	223	74	64.6	35	19.4%
269	90	68.8	8	4.0%	381	127	35.3	8	11.8%
214	71	160.9	66	0.1%	306	102	70.3	48	14.3%
209	70	69.1	9	33.3%	310	103	53.0	23	24.3%
90	30	166.1	70	-6.8%	132	44	81.6	66	1.2%
11	4	105.8	26	-3.7%	15	5	44.9	16	11.0%
502	167	40.6	2	3.0%	660	220	25.5	3	19.2%
23	8	111.1	29	20.6%	41	14	67.7	40	-0.7%
568	189	111.7	30	21.2%	762	254	60.8	31	26.9%
26	9	120.4	36	8.5%	37	12	61.8	32	6.2%
72	24	132.6	47	3.9%	97	32	65.2	36	4.4%
290	97	116.5	35	9.5%	407	136	57.0	25	14.5%
113	38	56.7	5	-15.0%	167	56	49.2	20	-15.5%
188	63	158.6	65	0.0%	259	86	71.0	51	9.4%
11	4	82.7	13	43.6%	18	6	44.9	15	16.0%
14	5	152.2	61	-13.0%	19	6	63.1	34	4.8%
288	96	157.2	63	-42.7%	382	127	71.5	52	-12.8%
141	47	174.9	72	-33.6%	194	65	77.8	62	-10.7%
193	64	92.6	20	23.5%	258	86	48.2	18	27.3%
12	4	74.1	11	37.8%	14	5	27.2	4	19.7%
23	8	101.3	24	16.6%	42	14	80.9	65	-25.2%
17	6	144.1	56	21.7%	30	10	95.5	77	-1.9%
13	4	116.1	34	-4.5%	21	7	72.4	56	-57.0%
67	22	151.2	60	13.6%	100	33	84.5	67	-1.0%
63	21	165.4	69	-18.6%	101	34	86.1	69	-17.5%
139	46	121.4	37	3.6%	206	69	70.2	47	10.9%
41	14	182.2	74	-68.8%	59	20	95.0	76	-98.2%
75	25	169.3	71	-147.0%	95	32	90.5	73	-73.1%
219	73	122.0	39	22.7%	322	107	69.0	44	19.8%
46	15	101.1	22	-0.6%	68	23	49.5	21	2.2%
41	14	133.6	48	-7.9%	65	22	72.6	57	-14.2%

Mothers Age 15 through 17: Three-Year Number of Births, Average Annual Number of Births and Three-Year Rate of Births per 1,000 Female; Teens Age 15 through 17; Mothers Age 18 and 19: Three-Year Number of Births, Average Annual Number of Births and Three-Year Rate of Births per 1,000 Female Teens Age 18 and 19; Mothers Age 15 through 19: Three-Year Number of Births, Average Annual Number of Births and Three-Year Rate of Births per 1,000 Female Teens Age 15 through 19; Oklahoma & Counties: 1994-1996 & 2005-2007.

State totals may not equal sum of counties due to data suppression to protect confidentiality and births for which the county of residence is not known.

## BIRTHS TO TEENS (continued)

county name	1994-1996 Ages 15-17			1994-1996 Ages 18-19			1994-1996 Ages 15-19			2005-2007 Ages 15-17				
	three year number	average annual number	three year rate/1000	three year number	average annual number	three year rate/1000	three year number	average annual number	three year rate/1000	three year number	average annual number	three year rate/1000	three year rank	change over time
Latimer	31	10	46.3	53	18	80.9	84	28	63.4	23	8	32.0	39	30.9%
Le Flore	131	44	39.4	258	86	145.0	389	130	76.2	103	34	33.0	42	16.2%
Lincoln	69	23	28.9	124	41	114.7	193	64	55.7	54	18	23.1	20	20.2%
Logan	60	20	29.6	101	34	53.2	161	54	41.0	30	10	12.5	6	57.9%
Love	24	8	36.5	33	11	142.2	57	19	64.1	17	6	28.0	30	23.5%
McClain	40	13	20.4	72	24	74.7	112	37	38.3	36	12	18.4	14	9.8%
McCurtain	123	41	43.8	250	83	176.2	373	124	88.3	103	34	40.7	63	7.1%
McIntosh	42	14	33.6	81	27	152.8	123	41	69.1	28	9	22.6	18	32.8%
Major	9	3	16.7	24	8	100.0	33	11	42.3	8	3	15.9	10	4.4%
Marshall	30	10	38.7	58	19	132.7	88	29	72.6	36	12	41.9	66	-8.1%
Mayes	116	39	48.9	171	57	131.0	287	96	78.1	76	25	28.9	33	40.9%
Murray	31	10	35.8	63	21	145.8	94	31	72.4	41	14	61.2	75	-70.9%
Muskogee	259	86	51.6	426	142	147.2	685	228	86.5	167	56	39.9	62	22.6%
Noble	27	9	36.9	49	16	121.6	76	25	67.0	9	3	12.7	7	65.5%
Nowata	24	8	37.6	54	18	153.0	78	26	78.6	15	5	20.4	16	45.7%
Okfuskee	40	13	49.0	54	18	128.0	94	31	75.9	23	8	37.0	52	24.4%
Oklahoma	1,758	586	44.5	2,908	969	109.8	4,666	1,555	70.7	1,526	509	37.3	53	16.1%
Okmulgee	130	43	49.2	200	67	130.0	330	110	78.9	93	31	34.8	48	29.2%
Osage	82	27	26.8	121	40	88.8	203	68	45.9	55	18	18.1	13	32.3%
Ottawa	95	32	50.0	163	54	104.0	258	86	74.4	86	29	39.0	57	21.9%
Pawnee	36	12	31.8	60	20	124.0	96	32	59.4	30	10	26.4	27	16.8%
Payne	89	30	27.3	189	63	26.8	278	93	26.9	72	24	22.6	19	16.9%
Pittsburg	100	33	34.8	198	66	141.8	298	99	69.7	90	30	33.6	45	3.2%
Pontotoc	72	24	30.9	165	55	82.7	237	79	54.7	76	25	33.4	43	-8.3%
Pottawatomie	171	57	37.6	293	98	82.0	464	155	57.2	132	44	31.0	37	17.5%
Pushmataha	32	11	41.1	41	14	120.2	73	24	65.2	27	9	33.5	44	18.7%
Roger Mills	5	2	17.6	9	3	86.5	14	5	36.1	7	2	42.9	67	-143.9%
Rogers	136	45	30.2	230	77	96.3	366	122	53.1	82	27	14.0	8	53.5%
Seminole	96	32	56.1	150	50	157.1	246	82	92.2	59	20	35.5	49	36.7%
Sequoyah	119	40	42.6	192	64	129.3	311	104	72.7	105	35	39.6	61	7.0%
Stephens	123	41	43.1	162	54	120.4	285	95	67.8	67	22	25.2	23	41.6%
Texas	36	12	27.6	82	27	99.0	118	39	55.4	62	21	47.3	72	-71.0%
Tillman	44	15	65.7	55	18	160.3	99	33	97.7	32	11	56.3	74	14.2%
Tulsa	1,281	427	39.8	2,150	717	102.4	3,431	1,144	64.5	1,078	359	30.1	35	24.4%
Wagoner	115	38	27.1	212	71	105.8	327	109	52.3	63	21	14.4	9	46.7%
Washington	87	29	29.4	154	51	99.4	241	80	53.4	72	24	21.9	17	25.2%
Washita	18	6	21.1	51	17	142.5	69	23	57.1	26	9	33.9	46	-60.1%
Woods	6	2	14.7	19	6	33.7	25	8	25.7	4	1	9.2	2	37.3%
Woodward	42	14	33.9	74	25	129.1	116	39	64.0	47	16	38.5	55	-13.5%

2005-2007 Ages 18-19					2005-2007 Ages 15-19				
three year number	average annual number	three year rate/1000	three year rank	change over time	three year number	average annual number	three year rate/1000	three year rank	change over time
51	17	63.2	6	21.9%	74	25	48.5	19	23.5%
269	90	138.5	51	4.5%	372	124	73.5	58	3.6%
142	47	130.0	46	-13.4%	196	65	57.1	26	-2.6%
120	40	64.2	7	-20.5%	150	50	35.1	7	14.5%
41	14	158.3	64	-11.3%	58	19	66.9	38	-4.3%
99	33	84.0	14	-12.4%	135	45	43.1	14	-12.5%
228	76	191.8	76	-8.8%	331	110	89.0	72	-0.8%
70	23	96.3	21	37.0%	98	33	49.8	22	27.9%
19	6	88.8	18	11.2%	27	9	37.7	11	10.9%
83	28	193.5	77	-45.8%	119	40	92.3	74	-27.1%
195	65	138.7	53	-5.8%	271	90	67.2	39	14.0%
52	17	165.1	68	-13.2%	93	31	94.4	75	-30.4%
365	122	141.6	54	3.8%	532	177	78.7	63	9.1%
30	10	79.2	12	34.9%	39	13	35.9	9	46.4%
51	17	135.6	50	11.3%	66	22	59.4	28	24.5%
56	19	128.7	45	-0.6%	79	26	74.8	60	1.5%
2,996	999	115.5	33	-5.2%	4,522	1,507	67.7	41	4.3%
196	65	125.6	41	3.4%	289	96	68.3	42	13.5%
137	46	88.7	17	0.1%	192	64	41.9	13	8.6%
184	61	112.4	31	-8.1%	270	90	70.3	49	5.5%
66	22	110.7	28	10.7%	96	32	55.5	24	6.6%
193	64	22.8	1	14.8%	265	88	22.8	1	15.4%
202	67	147.6	59	-4.0%	292	97	72.2	53	-3.5%
151	50	91.1	19	-10.2%	227	76	57.7	27	-5.5%
319	106	106.3	27	-29.7%	451	150	62.2	33	-8.8%
56	19	138.6	52	-15.3%	83	28	68.5	43	-5.1%
14	5	144.3	57	-66.8%	21	7	80.8	64	-123.8%
245	82	85.2	15	11.6%	327	109	37.5	10	29.3%
132	44	122.0	38	22.3%	191	64	69.6	46	24.6%
189	63	133.9	49	-3.5%	294	98	72.3	55	0.5%
180	60	126.1	42	-4.8%	247	82	60.4	29	11.0%
102	34	123.8	40	-25.0%	164	55	76.8	61	-38.7%
46	15	142.4	55	11.2%	78	26	87.5	70	10.4%
2,319	773	114.6	32	-12.0%	3,397	1,132	60.6	30	6.1%
189	63	85.4	16	19.3%	252	84	38.3	12	26.8%
160	53	101.1	23	-1.8%	232	77	47.7	17	10.6%
52	17	127.1	43	10.8%	78	26	66.3	37	-16.1%
29	10	48.2	3	-42.7%	33	11	31.9	6	-23.7%
82	27	161.4	67	-25.0%	129	43	74.6	59	-16.5%

## CHILD ABUSE AND NEGLECT CONFIRMATIONS

county name	FY 1995-1997			FY2006-2008				
	three year number	average annual number	three year rate/1000	three year number	average annual number	three year rate/1000	three year rank	change over time
OKLAHOMA	36,973	12,324	14.3	38,732	12,911	14.5		-1.8%
Adair	425	142	23.6	448	149	24.0	66	-2.0%
Alfalfa	85	28	22.4	43	14	14.9	39	33.6%
Atoka	155	52	15.7	200	67	21.3	61	-36.0%
Beaver	31	10	6.4	38	13	9.5	14	-48.4%
Beckham	387	129	25.6	375	125	25.2	70	1.9%
Blaine	191	64	21.1	185	62	24.2	67	-14.7%
Bryan	269	90	10.5	732	244	26.4	71	-152.4%
Caddo	648	216	25.4	263	88	11.3	20	55.3%
Canadian	921	307	13.1	1,088	363	14.3	36	-9.2%
Carter	566	189	15.9	775	258	21.8	62	-36.9%
Cherokee	442	147	14.4	473	158	14.7	38	-1.8%
Choctaw	160	53	12.9	229	76	20.7	60	-61.0%
Cimarron	24	8	9.0	13	4	6.9	6	23.0%
Cleveland	1,626	542	11.2	1,018	339	6.5	4	42.1%
Coal	99	33	21.0	99	33	23.7	65	-12.8%
Comanche	896	299	9.4	873	291	9.0	12	4.6%
Cotton	45	15	8.9	86	29	18.3	52	-105.7%
Craig	91	30	8.8	193	64	19.8	56	-124.2%
Creek	563	188	10.6	422	141	8.4	8	20.2%
Custer	368	123	18.2	336	112	19.2	54	-5.6%
Delaware	177	59	7.4	360	120	13.4	32	-80.6%
Dewey	75	25	19.5	37	12	13.4	31	31.1%
Ellis	19	6	6.1	12	4	5.0	1	19.0%
Garfield	773	258	17.6	494	165	11.4	21	34.8%
Garvin	868	289	42.8	442	147	23.0	64	46.3%
Grady	377	126	10.5	402	134	10.7	16	-1.6%
Grant	69	23	16.9	33	11	11.6	22	31.2%
Greer	45	15	11.9	102	34	31.7	75	-166.8%
Harmon	27	9	9.5	23	8	10.9	18	-14.2%
Harper	22	7	7.9	11	4	5.1	3	35.2%
Haskell	181	60	20.4	108	36	12.2	24	40.4%
Hughes	116	39	11.9	225	75	25.1	69	-110.6%
Jackson	390	130	15.5	476	159	20.7	59	-33.4%
Jefferson	84	28	16.6	62	21	14.1	35	15.2%
Johnston	106	35	13.2	247	82	33.0	77	-150.6%
Kay	763	254	20.0	919	306	26.7	72	-33.4%
Kingfisher	100	33	8.8	83	28	8.0	7	9.5%
Kiowa	178	59	21.6	117	39	17.9	50	16.9%

Three-Year Number & Average Annual Number of Confirmations After Investigation  
 Three-Year Rate per 1,000 children  
 Oklahoma & Counties: Fiscal Years 1995-1997 & Fiscal Years 2006-2008



county name	FY 1995-1997			FY2006-2008				
	three year number	average annual number	three year rate/1000	three year number	average annual number	three year rate/1000	three year rank	change over time
Lafimer	101	34	12.1	144	48	20.1	58	-65.2%
Le Flore	1,057	352	28.8	521	174	14.1	34	51.0%
Lincoln	352	117	13.8	300	100	12.4	26	9.8%
Logan	258	86	10.4	296	99	11.3	19	-8.7%
Love	108	36	16.7	82	27	12.6	27	24.2%
McClain	334	111	16.2	400	133	17.6	48	-8.7%
McCurtain	532	177	18.1	740	247	28.2	74	-56.0%
McIntosh	342	114	27.4	328	109	26.9	73	1.7%
Major	82	27	13.6	59	20	12.4	25	8.7%
Marshall	144	48	17.3	112	37	10.8	17	37.6%
Mayes	524	175	18.1	550	183	19.2	55	-6.2%
Murray	151	50	16.5	113	38	13.1	28	20.4%
Muskogee	1,217	406	22.2	1,018	339	19.9	57	10.0%
Noble	105	35	11.9	134	45	17.0	46	-43.1%
Nowata	95	32	12.0	171	57	22.9	63	-90.5%
Okfuskee	68	23	7.6	126	42	17.3	47	-126.1%
Oklahoma	7,583	2,528	15.5	9,942	3,314	18.2	51	-17.0%
Okmulgee	281	94	9.2	383	128	13.2	30	-44.1%
Osage	397	132	11.4	271	90	8.9	10	22.1%
Ottawa	242	81	10.2	237	79	10.1	15	0.9%
Pawnee	190	63	14.7	165	55	14.0	33	5.0%
Payne	819	273	20.7	628	209	14.3	37	30.8%
Pittsburg	372	124	12.2	919	306	31.8	76	-161.6%
Pontotoc	550	183	21.3	392	131	15.5	42	27.1%
Pottawatomie	1,102	367	22.4	651	217	13.1	29	41.5%
Pushmataha	242	81	27.7	142	47	17.8	49	35.7%
Roger Mills	37	12	12.5	11	4	5.0	2	59.8%
Rogers	380	127	7.1	735	245	12.0	23	-69.9%
Seminole	344	115	17.2	438	146	24.4	68	-41.9%
Sequoyah	566	189	18.6	272	91	8.9	11	51.9%
Stephens	321	107	9.9	508	169	16.8	45	-69.3%
Texas	172	57	11.0	120	40	6.8	5	38.5%
Tillman	94	31	11.7	120	40	19.1	53	-63.8%
Tulsa	3,631	1,210	8.7	4,283	1,428	9.4	13	-8.7%
Wagoner	457	152	10.0	436	145	8.8	9	12.7%
Washington	855	285	23.1	506	169	15.2	41	34.0%
Washita	110	37	12.0	137	46	16.6	43	-38.0%
Woods	135	45	24.3	69	23	14.9	40	38.8%
Woodward	261	87	17.2	231	77	16.8	44	2.7%

# HIGH SCHOOL DROPOUTS

county name	School Years 2001/2002 - 2003/2004					School Years 2005/2006 - 2007/2008						
	three year number any age any grade	average annual number any age any grade	three year number < age 19 high school	average annual number, < age 19 high school	three year rate < age 19 high school	three year number, any age any grade	average annual number, any age any grade	three year number, < age 19 high school	average annual number, < age 19 high school	three year rate < age 19 high school	three year rank	change over time
OKLAHOMA	23,650	7,883	19,273	6,424	3.7%	19,905	6,635	17,174	5,725	3.3%		12.0%
Adair	189	63	166	55	4.9%	318	106	320	107	8.4%	77	-71.1%
Alfalfa	3	1	3	1	0.4%	4	1	4	1	0.6%	3	-62.6%
Atoka	88	29	75	25	3.9%	54	18	40	13	2.0%	25	48.1%
Beaver	17	6	8	3	0.8%	6	2	5	2	0.5%	2	35.7%
Beckham	134	45	126	42	4.2%	174	58	157	52	5.3%	73	-26.7%
Blaine	13	4	11	4	0.5%	28	9	16	5	0.8%	6	-57.3%
Bryan	347	116	255	85	4.4%	205	68	198	66	3.5%	58	22.2%
Caddo	169	56	148	49	2.7%	161	54	149	50	3.0%	46	-12.8%
Canadian	601	200	544	181	3.3%	519	173	475	158	2.7%	42	17.3%
Carter	294	98	264	88	3.5%	331	110	312	104	4.2%	69	-19.3%
Cherokee	218	73	185	62	3.5%	205	68	196	65	3.6%	61	-1.6%
Choctaw	78	26	72	24	3.1%	91	30	95	32	3.9%	67	-23.3%
Cimarron	5	2	5	2	0.9%	1	0	1	0	0.2%	1	74.5%
Cleveland	1,390	463	1,194	398	3.7%	866	289	765	255	2.3%	32	38.3%
Coal	22	7	22	7	2.1%	26	9	24	8	2.4%	34	-13.7%
Comanche	848	283	660	220	3.8%	618	206	465	155	2.6%	41	32.1%
Cotton	15	5	12	4	1.2%	12	4	14	5	1.3%	13	-11.2%
Craig	67	22	65	22	2.4%	58	19	64	21	2.1%	28	10.9%
Creek	332	111	283	94	2.5%	316	105	265	88	2.3%	33	9.9%
Custer	153	51	133	44	3.2%	107	36	93	31	2.5%	37	23.6%
Delaware	271	90	244	81	4.4%	241	80	217	72	3.8%	65	13.9%
Dewey	12	4	9	3	1.1%	10	3	4	1	0.6%	4	45.6%
Ellis	10	3	9	3	1.4%	8	3	12	4	1.9%	24	-36.4%
Garfield	245	82	203	68	2.4%	197	66	127	42	1.6%	19	33.0%
Garvin	137	46	115	38	2.6%	188	63	168	56	3.8%	64	-43.4%
Grady	288	96	264	88	3.6%	247	82	233	78	3.1%	50	12.6%
Grant	3	1	3	1	0.3%	7	2	8	3	0.9%	8	-183.5%
Greer	43	14	36	12	4.3%	24	8	14	5	1.7%	20	61.6%
Harmon	23	8	17	6	3.3%	29	10	26	9	5.4%	75	-64.1%
Harper	7	2	3	1	0.4%	10	3	10	3	1.6%	18	-266.1%
Haskell	77	26	70	23	3.5%	39	13	47	16	2.5%	39	27.9%
Hughes	123	41	98	33	4.7%	94	31	80	27	3.7%	62	20.2%
Jackson	202	67	153	51	3.2%	248	83	161	54	3.6%	60	-12.9%
Jefferson	38	13	31	10	2.7%	23	8	26	9	2.3%	31	17.1%
Johnston	51	17	45	15	2.9%	52	17	41	14	2.4%	36	15.0%
Kay	489	163	417	139	5.1%	558	186	521	174	6.7%	76	-31.3%
Kingfisher	52	17	41	14	1.3%	17	6	20	7	0.7%	5	48.1%
Kiowa	62	21	55	18	3.1%	61	20	59	20	3.5%	59	-11.5%

Three-Year Number & Average Annual Number of Youth (any age) Dropping Out of Any Grade; Three-Year Number and Average Annual Number of Youth (under age 19) Dropping Out of High School (Grades 9-12); Three-Year High School Dropout Rate (Youth under age 19 dropping out of grades 9-12); Oklahoma & counties: School Years 2001/2002 through 2003/2004 & School Years 2005/2006 through 2007/2008

county name	School Years 2001/2002 - 2003/2004					School Years 2005/2006 - 2007/2008						
	three year number any age any grade	average annual number any age any grade	three year number < age 19 high school	average annual number, < age 19 high school	three year rate < age 19 high school	three year number, any age any grade	average annual number, any age any grade	three year number, < age 19 high school	average annual number, < age 19 high school	three year rate < age 19 high school	three year rank	change over time
Lafimer	16	5	15	5	1.0%	32	11	34	11	2.2%	30	-125.9%
Le Flore	329	110	293	98	3.7%	271	90	275	92	3.3%	55	12.0%
Lincoln	108	36	101	34	2.0%	120	40	107	36	2.0%	26	-3.6%
Logan	109	36	102	34	2.6%	33	11	36	12	0.9%	7	66.0%
Love	13	4	11	4	0.8%	45	15	33	11	2.4%	35	-206.6%
McClain	172	57	144	48	2.9%	58	19	57	19	2.0%	27	30.5%
McCurtain	155	52	139	46	2.2%	69	23	54	18	1.5%	16	34.5%
McIntosh	90	30	73	24	2.5%	197	66	153	51	3.0%	47	-21.0%
Major	25	8	23	8	1.5%	81	27	58	19	1.4%	15	8.9%
Marshall	33	11	22	7	1.1%	65	22	69	23	1.4%	14	-30.3%
Mayes	239	80	206	69	3.5%	102	34	100	33	2.5%	40	27.4%
Murray	38	13	35	12	1.9%	32	11	37	12	1.9%	23	-2.5%
Muskogee	367	122	326	109	2.8%	478	159	412	137	3.7%	63	-31.5%
Noble	41	14	32	11	1.6%	45	15	21	7	1.1%	11	31.7%
Nowata	17	6	13	4	0.7%	23	8	18	6	1.0%	9	-35.8%
Okfuskee	68	23	59	20	3.1%	160	53	59	20	3.3%	53	-3.5%
Oklahoma	5,867	1,956	4,275	1,425	4.8%	3,687	1,229	2,745	915	3.1%	49	35.6%
Okmulgee	202	67	161	54	2.6%	116	39	104	35	1.7%	22	33.3%
Osage	109	36	100	33	3.0%	55	18	52	17	1.7%	21	44.8%
Ottawa	253	84	222	74	4.6%	120	40	116	39	2.1%	29	53.7%
Pawnee	95	32	86	29	3.8%	42	14	35	12	1.5%	17	61.3%
Payne	403	134	319	106	3.6%	368	123	355	118	4.1%	68	-14.4%
Pittsburg	328	109	288	96	4.3%	252	84	232	77	3.5%	57	19.3%
Pontotoc	162	54	152	51	2.8%	247	82	235	78	4.3%	70	-56.2%
Pottawatomie	486	162	439	146	4.2%	332	111	323	108	3.0%	44	30.3%
Pushmataha	105	35	97	32	4.7%	64	21	76	25	3.9%	66	18.1%
Roger Mills	15	5	14	5	1.9%	9	3	8	3	1.2%	12	38.0%
Rogers	414	138	355	118	3.0%	464	155	434	145	3.4%	56	-14.9%
Seminole	152	51	129	43	3.2%	138	46	139	46	3.3%	54	-3.8%
Sequoyah	253	84	235	78	3.5%	222	74	199	66	2.8%	43	21.7%
Stephens	320	107	299	100	4.2%	415	138	374	125	5.3%	74	-25.4%
Texas	142	47	134	45	4.1%	111	37	92	31	3.0%	45	27.4%
Tillman	78	26	55	18	3.4%	61	20	54	18	3.2%	51	6.1%
Tulsa	4,649	1,550	3,672	1,224	4.3%	4,471	1,490	3,990	1,330	4.5%	71	-5.3%
Wagoner	242	81	202	67	4.1%	298	99	280	93	5.2%	72	-28.9%
Washington	277	92	259	86	3.3%	316	105	255	85	3.2%	52	2.2%
Washita	19	6	17	6	0.9%	29	10	18	6	1.1%	10	-18.1%
Woods	44	15	32	11	2.3%	53	18	36	12	3.1%	48	-31.1%
Woodward	99	33	93	31	3.2%	71	24	67	22	2.5%	38	22.4%

### = zero base- cannot calculate change; State totals may not equal sum of counties due to data suppression to protect confidentiality and death for which the county of residence is not known.

## JUVENILE VIOLENT CRIME ARRESTS

county name	1994-1996			2005-2007				
	three year number	average annual number	three year rate/100,000	three year number	average annual number	three year rate/100,000	three year rank	change over time
OKLAHOMA	4,137	1,379	363.3	2,173	724	185.3		49.0%
Adair	8	3	95.7	8	3	92.4	36	3.4%
Alfalfa	2	1	108.4	0	0	0.0	tie for 1	100.0%
Atoka	0	0	0.0	3	1	67.9	23	###
Beaver	0	0	0.0	3	1	148.5	59	###
Beckham	7	2	101.2	7	2	113.0	47	-11.7%
Blaine	6	2	152.0	2	1	55.2	18	63.7%
Bryan	11	4	96.3	14	5	112.6	46	-17.0%
Caddo	26	9	227.4	20	7	175.9	63	22.6%
Canadian	47	16	146.8	26	9	73.4	25	50.0%
Carter	43	14	261.3	29	10	184.7	64	29.3%
Cherokee	24	8	182.0	11	4	75.5	27	58.5%
Choctaw	12	4	194.6	5	2	98.6	41	49.3%
Cimarron	1	0	82.1	2	1	210.3	68	-156.0%
Cleveland	89	30	137.9	50	17	70.6	24	48.8%
Coal	0	0	0.0	0	0	0.0	tie for 1	###
Comanche	221	74	535.9	111	37	271.0	73	49.4%
Cotton	5	2	210.8	0	0	0.0	tie for 1	100.0%
Craig	6	2	126.3	6	2	130.5	52	-3.3%
Creek	66	22	270.0	20	7	83.0	32	69.3%
Custer	19	6	212.0	14	5	193.6	66	8.7%
Delaware	1	0	9.8	14	5	108.5	45	-1004.3%
Dewey	3	1	147.9	1	0	76.6	28	48.2%
Ellis	0	0	0.0	0	0	0.0	tie for 1	###
Garfield	49	16	247.6	9	3	49.4	16	80.0%
Garvin	39	13	408.8	8	3	93.5	37	77.1%
Grady	29	10	174.9	25	8	146.7	58	16.2%
Grant	0	0	0.0	1	0	62.9	22	###
Greer	9	3	496.9	2	1	139.5	57	71.9%
Harmon	4	1	293.3	0	0	0.0	tie for 1	100.0%
Harper	0	0	0.0	0	0	0.0	tie for 1	###
Haskell	4	1	98.2	3	1	74.8	26	23.9%
Hughes	21	7	444.8	2	1	47.1	15	89.4%
Jackson	19	6	182.4	10	3	99.9	42	45.3%
Jefferson	1	0	40.1	3	1	149.3	60	-272.7%
Johnston	7	2	178.8	2	1	58.1	21	67.5%
Kay	86	29	512.5	76	25	483.8	77	5.6%
Kingfisher	8	3	158.1	0	0	0.0	tie for 1	100.0%
Kiowa	64	21	1613.7	5	2	166.6	62	89.7%

Three-Year Number & Average Annual Number of Arrests of Youths Age 10 through 17 for Violent Crimes  
 Three-Year Rate per 100,000 Youths Age 10 through 17  
 Oklahoma & Counties: 1994-1996 & 2005-2007

county name	1994-1996			2005-2007				
	three year number	average annual number	three year rate/100,000	three year number	average annual number	three year rate/100,000	three year rank	change over time
Lafimer	8	3	203.5	0	0	0.0	tie for 1	100.0%
Le Flore	51	17	294.3	19	6	116.9	48	60.3%
Lincoln	21	7	177.9	5	2	42.4	13	76.1%
Logan	14	5	124.4	16	5	131.8	53	-5.9%
Love	2	1	64.4	0	0	0.0	tie for 1	100.0%
McClain	4	1	42.4	3	1	29.4	12	30.6%
McCurtain	54	18	387.8	13	4	105.9	44	72.7%
McIntosh	14	5	235.1	3	1	51.4	17	78.1%
Major	7	2	237.7	2	1	86.3	35	63.7%
Marshall	8	3	217.7	6	2	132.7	55	39.0%
Mayes	9	3	69.4	18	6	132.5	54	-91.1%
Murray	9	3	206.6	3	1	78.2	30	62.2%
Muskogee	147	49	572.1	44	15	191.8	65	66.5%
Noble	10	3	247.1	3	1	83.4	33	66.3%
Nowata	5	2	141.5	6	2	164.0	61	-16.0%
Okfuskee	10	3	243.2	2	1	57.7	19	76.3%
Oklahoma	1,357	452	672.7	498	166	227.0	69	66.3%
Okmulgee	43	14	323.4	13	4	95.5	38	70.5%
Osage	17	6	103.6	12	4	77.6	29	25.1%
Ottawa	11	4	107.3	14	5	125.3	50	-16.7%
Pawnee	3	1	50.2	6	2	103.9	43	-106.9%
Payne	36	12	212.6	14	5	81.9	31	61.5%
Pittsburg	24	8	157.3	8	3	58.0	20	63.1%
Pontotoc	14	5	119.8	11	4	97.8	40	18.4%
Pottawatomie	88	29	389.4	57	19	252.7	71	35.1%
Pushmataha	10	3	250.1	11	4	280.3	74	-12.1%
Roger Mills	1	0	65.6	0	0	0.0	tie for 1	100.0%
Rogers	28	9	121.9	13	4	43.2	14	64.5%
Seminole	31	10	338.6	11	4	134.9	56	60.1%
Sequoyah	17	6	119.8	51	17	350.3	75	-192.3%
Stephens	17	6	106.8	17	6	123.5	49	-15.6%
Texas	16	5	252.0	14	5	201.4	67	20.1%
Tillman	25	8	660.9	3	1	97.4	39	85.3%
Tulsa	999	333	588.1	700	233	366.3	76	37.7%
Wagoner	15	5	70.3	30	10	126.2	51	-79.5%
Washington	42	14	253.3	40	13	248.4	70	1.9%
Washita	8	3	193.7	10	3	265.3	72	-37.0%
Woods	1	0	38.6	0	0	0.0	tie for 1	100.0%
Woodward	24	8	331.7	5	2	84.2	34	74.6%

### = zero base - cannot calculate change

## INFANT MORTALITY

county name	1994-1996			2004-2006				
	three year number	average annual number	three year rate/1000	three year number	average annual number	three year rate/1000	three year rank	change over time
OKLAHOMA	1,150	383	8.4	1,258	419	8.0		4.4%
Adair	10	3	9.8	7	2	6.1	23	37.7%
Alfalfa	2	1	12.4	0	0	0.0	tie for 1	100.0%
Atoka	6	2	13.5	5	2	10.0	63	26.3%
Beaver	0	0	0.0	1	0	4.4	13	###
Beckham	7	2	9.8	6	2	6.4	28	35.0%
Blaine	6	2	13.2	4	1	8.5	51	35.9%
Bryan	9	3	6.9	19	6	12.0	73	-74.2%
Caddo	8	3	6.5	6	2	4.8	15	27.0%
Canadian	11	4	3.7	32	11	7.8	40	-113.2%
Carter	14	5	7.9	17	6	8.4	50	-6.8%
Cherokee	9	3	5.6	21	7	11.1	65	-97.6%
Choctaw	3	1	5.4	5	2	7.3	36	-36.0%
Cimarron	1	0	10.5	1	0	11.9	72	-13.1%
Cleveland	38	13	5.7	50	17	6.1	22	-7.0%
Coal	3	1	13.0	6	2	28.3	77	-117.0%
Comanche	56	19	9.1	41	14	7.1	33	22.3%
Cotton	3	1	12.1	1	0	4.5	14	63.1%
Craig	7	2	14.0	5	2	9.1	58	34.6%
Creek	15	5	5.8	23	8	8.7	55	-51.0%
Custer	8	3	7.8	6	2	5.3	17	32.9%
Delaware	9	3	7.5	6	2	4.3	12	43.0%
Dewey	3	1	20.5	2	1	11.8	71	42.4%
Ellis	2	1	15.5	0	0	0.0	tie for 1	100.0%
Garfield	21	7	9.1	33	11	11.8	69	-28.8%
Garvin	6	2	5.9	11	4	9.9	62	-66.7%
Grady	12	4	6.9	17	6	8.7	54	-25.5%
Grant	0	0	0.0	0	0	0.0	tie for 1	###
Greer	1	0	5.3	4	1	21.3	tie for 75	-302.1%
Harmon	2	1	15.2	0	0	0.0	tie for 1	100.0%
Harper	0	0	0.0	1	0	6.4	27	###
Haskell	8	3	17.8	3	1	6.2	25	65.2%
Hughes	3	1	6.5	4	1	7.3	35	-11.6%
Jackson	13	4	7.7	15	5	11.2	66	-44.3%
Jefferson	0	0	0.0	3	1	11.5	67	###
Johnston	6	2	15.5	4	1	9.0	57	41.6%
Kay	21	7	10.1	17	6	8.3	48	18.3%
Kingfisher	3	1	6.1	1	0	1.7	7	71.2%
Kiowa	0	0	0.0	2	1	5.8	20	###

Three-Year Number & Average Annual Number of Deaths per 1,000 Live Births; Three-Year Rate of Deaths per 1,000 Live Births

Oklahoma & Counties: 1994-1996 & 2004-2006; ### = zero base - cannot calculate change; State totals may not equal sum of counties due to data suppression to protect confidentiality and death for which the county of residence is not known.



county name	1994-1996			2004-2006				
	three year number	average annual number	three year rate/1000	three year number	average annual number	three year rate/1000	three year rank	change over time
Lafimer	4	1	10.8	4	1	11.7	68	-7.9%
Le Flore	13	4	6.9	18	6	8.2	47	-19.3%
Lincoln	12	4	11.0	10	3	8.0	45	26.9%
Logan	6	2	6.0	13	4	9.6	61	-60.1%
Love	1	0	3.5	2	1	5.5	19	-60.1%
McClain	5	2	5.4	10	3	8.1	46	-50.8%
McCurtain	12	4	7.7	13	4	9.0	56	-16.3%
McIntosh	6	2	9.4	10	3	15.7	74	-66.4%
Major	0	0	0.0	2	1	7.6	38	###
Marshall	5	2	10.9	2	1	3.2	8	70.9%
Mayes	19	6	12.7	10	3	6.2	24	51.3%
Murray	4	1	9.6	2	1	4.0	10	58.0%
Muskogee	20	7	6.7	19	6	6.2	26	7.0%
Noble	1	0	2.4	3	1	7.4	37	-210.4%
Nowata	4	1	10.9	2	1	5.2	16	52.3%
Okfuskee	5	2	12.2	3	1	6.6	29	46.1%
Oklahoma	281	94	9.3	329	110	9.2	59	1.4%
Okmulgee	13	4	8.9	13	4	7.8	39	11.9%
Osage	8	3	6.8	12	4	8.6	53	-27.6%
Ottawa	9	3	7.7	9	3	6.6	30	13.9%
Pawnee	4	1	6.8	1	0	1.6	6	76.5%
Payne	19	6	8.5	16	5	6.0	21	29.7%
Pittsburg	14	5	9.5	14	5	8.5	52	10.4%
Pontotoc	16	5	11.6	13	4	8.4	49	27.2%
Pottawatomie	22	7	9.1	15	5	5.5	18	39.9%
Pushmataha	4	1	9.9	3	1	7.0	32	29.2%
Roger Mills	2	1	19.0	3	1	21.3	tie for 75	-11.7%
Rogers	12	4	4.9	23	8	8.0	44	-64.1%
Seminole	6	2	5.8	8	3	7.9	41	-35.0%
Sequoyah	10	3	6.4	12	4	7.1	34	-11.0%
Stephens	12	4	8.3	16	5	9.5	60	-15.0%
Texas	3	1	4.3	9	3	7.9	43	-84.9%
Tillman	3	1	7.5	4	1	10.7	64	-41.9%
Tulsa	229	76	9.4	222	74	7.9	42	16.0%
Wagoner	14	5	7.2	10	3	4.2	11	41.8%
Washington	12	4	7.7	12	4	6.7	31	12.8%
Washita	4	1	11.0	2	1	4.0	9	63.5%
Woods	1	0	3.9	0	0	0.0	tie for 1	100.0%
Woodward	8	3	11.3	10	3	11.8	70	-4.1%

## CHILD AND TEEN DEATHS

county name	1994-1996 Ages 1-14			1994-1996 Ages 15-19			1994-1996 Ages 1-19			2004-2006 Ages 1-14		
	three year number of deaths	average annual # of deaths	three year rate/100,000	three year number of deaths	average annual # of deaths	three year rate/100,000	three year number of deaths	average annual # of deaths	three year rate/100,000	three year number of deaths	average annual # of deaths	three year rate/100,000
OKLAHOMA	675	225	33.1	742	247	100.1	1,417	472	51.0	557	186	27.9
Adair	6	2	43.2	7	2	136.0	13	4	68.3	4	1	28.0
Alfalfa	2	1	65.7	5	2	445.2	7	2	168.1	1	0	47.6
Atoka	2	1	25.7	2	1	63.4	4	1	36.5	4	1	56.5
Beaver	1	0	26.1	1	0	77.6	2	1	39.1	0	0	0.0
Beckham	5	2	38.2	4	1	95.9	9	3	52.1	3	1	27.9
Blaine	2	1	28.2	2	1	87.6	4	1	42.7	3	1	53.2
Bryan	9	3	45.9	6	2	71.8	15	5	53.7	7	2	34.2
Caddo	6	2	30.0	19	6	269.2	25	8	92.4	12	4	68.7
Canadian	8	3	13.9	17	6	90.1	25	8	32.7	11	4	20.0
Carter	14	5	50.3	10	3	103.3	24	8	64.0	5	2	18.8
Cherokee	10	3	43.1	3	1	32.7	13	4	40.2	5	2	20.5
Choctaw	7	2	71.7	2	1	56.6	9	3	67.7	3	1	35.6
Cimarron	0	0	0.0	0	0	0.0	0	0	0.0	2	1	130.0
Cleveland	32	11	27.1	27	9	54.2	59	20	35.1	23	8	20.1
Coal	2	1	54.0	1	0	68.7	3	1	58.1	1	0	30.6
Comanche	23	8	29.8	18	6	67.3	41	14	39.5	24	8	32.6
Cotton	1	0	24.4	3	1	206.6	4	1	72.0	0	0	0.0
Craig	3	1	39.3	4	1	134.1	7	2	65.9	3	1	39.8
Creek	14	5	34.2	23	8	153.7	37	12	66.2	13	4	34.0
Custer	1	0	6.0	6	2	83.7	7	2	29.3	3	1	23.4
Delaware	5	2	28.1	6	2	89.7	11	4	44.9	7	2	34.7
Dewey	0	0	0.0	2	1	217.4	2	1	47.6	1	0	47.8
Ellis	0	0	0.0	1	0	108.1	1	0	29.5	2	1	109.9
Garfield	10	3	28.4	13	4	116.2	23	8	49.5	7	2	21.8
Garvin	11	4	69.7	9	3	152.4	20	7	92.2	8	3	55.2
Grady	11	4	37.4	18	6	178.3	29	10	73.5	9	3	32.8
Grant	2	1	60.4	2	1	199.4	4	1	92.8	1	0	45.5
Greer	0	0	0.0	0	0	0.0	0	0	0.0	2	1	84.6
Harmon	0	0	0.0	0	0	0.0	0	0	0.0	1	0	65.4
Harper	2	1	89.6	0	0	0.0	2	1	66.1	1	0	65.2
Haskell	5	2	75.8	1	0	39.2	6	2	65.6	2	1	29.2
Hughes	2	1	27.3	2	1	69.4	4	1	39.2	7	2	102.0
Jackson	5	2	23.7	11	4	157.7	16	5	57.0	6	2	33.7
Jefferson	4	1	101.9	3	1	197.4	7	2	128.6	2	1	60.1
Johnston	2	1	31.6	3	1	112.1	5	2	55.5	4	1	71.8
Kay	5	2	16.9	15	5	152.4	20	7	50.7	6	2	22.6
Kingfisher	3	1	32.8	3	1	105.7	6	2	50.1	2	1	25.7
Kiowa	1	0	14.4	4	1	173.8	5	2	54.2	2	1	40.4

Three-Year Number & Average Annual Number of Deaths of Children Age 1 through 14; Three-Year Number & Average Annual Number of Deaths of Youth Age 15 through 19; Three-Year Number & Average Annual Number of Deaths of Children & Youth Age 1 through 19; Three-Year Rate per 100,000 Children Age 1 through 14; Three-Year Rate per 100,000 Youth Age 15 through 19; Three-Year Rate per 100,000 children & Youth Age 1 through 19; Oklahoma & Counties: 1994-1996 & 2004-2006.

2004-2006 Ages 1-14 (cont.)		2004-2006 Ages 15-19					2004-2006 Ages 1-19				
three year rank	change over time	three year number of deaths	average annual # of deaths	three year rate/100,000	three year rank	changer over time	three year number of deaths	average annual # of deaths	three year rate/100,000	three year rank	change over time
	15.9%	608	203	80.2		19.9%	1,165	388	42.3		17.2%
34	35.2%	8	3	155.6	67	-14.4%	12	4	61.8	59	9.6%
59	27.5%	0	0	0.0	tie for 1	100.0%	1	0	32.5	16	80.7%
67	-120.1%	2	1	72.4	28	-14.2%	6	2	61.0	53	-66.8%
tie for 1	100.0%	1	0	85.5	37	-10.3%	1	0	24.2	7	38.1%
32	26.8%	3	1	79.4	32	17.2%	6	2	41.3	29	20.7%
63	-88.7%	3	1	117.3	55	-33.8%	6	2	73.2	66	-71.5%
45	25.6%	9	3	107.6	50	-49.7%	16	5	55.4	45	-3.3%
72	-129.2%	6	2	80.4	34	70.1%	18	6	72.2	64	21.8%
16	-44.3%	9	3	40.9	13	54.6%	20	7	26.0	10	20.4%
15	62.7%	10	3	106.2	49	-2.8%	15	5	41.6	31	35.0%
18	52.4%	5	2	43.2	14	-32.2%	10	3	27.8	11	30.7%
49	50.3%	3	1	89.9	39	-58.7%	6	2	51.0	39	24.6%
77	###	1	0	147.5	64	###	3	1	135.4	76	###
17	26.0%	26	9	48.7	18	10.2%	49	16	29.1	13	17.0%
38	43.4%	0	0	0.0	tie for 1	100.0%	1	0	22.1	4	62.0%
40	-9.2%	10	3	35.8	10	46.8%	34	11	33.4	19	15.3%
tie for 1	100.0%	3	1	237.0	74	-14.7%	3	1	61.5	58	14.7%
53	-1.3%	2	1	65.4	25	51.3%	5	2	47.2	37	28.4%
44	0.4%	13	4	86.7	38	43.6%	26	9	48.9	38	26.1%
25	-290.8%	5	2	78.3	30	6.5%	8	3	41.6	32	-42.0%
47	-23.5%	10	3	128.3	56	-43.1%	17	6	60.8	52	-35.3%
60	###	2	1	224.5	72	-3.3%	3	1	100.5	72	-111.1%
76	###	0	0	0.0	tie for 1	100.0%	2	1	80.1	68	-171.6%
21	23.3%	11	4	99.3	43	14.6%	18	6	41.6	30	15.9%
64	20.8%	12	4	232.0	73	-52.2%	20	7	101.7	73	-10.3%
41	12.5%	4	1	36.9	11	79.3%	13	4	33.9	20	53.8%
58	24.7%	1	0	93.5	40	53.1%	2	1	61.3	57	34.0%
74	###	2	1	188.5	70	###	4	1	116.8	74	###
70	###	4	1	547.9	77	###	5	2	221.3	77	###
69	27.2%	0	0	0.0	tie for 1	###	1	0	45.4	35	31.4%
36	61.5%	7	2	297.7	75	-660.4%	9	3	97.8	71	-49.1%
75	-272.9%	5	2	195.1	71	-181.0%	12	4	127.3	75	-224.4%
43	-42.1%	4	1	64.8	24	58.9%	10	3	41.7	33	26.9%
68	41.0%	1	0	81.1	35	58.9%	3	1	65.8	62	48.8%
73	-127.2%	3	1	130.9	60	-16.8%	7	2	89.0	69	-60.4%
24	-33.5%	13	4	130.3	59	14.5%	19	6	52.0	41	-2.4%
28	21.7%	3	1	100.5	46	4.9%	5	2	46.4	36	7.3%
55	-179.7%	0	0	0.0	tie for 1	100.0%	2	1	28.5	12	47.4%

### = zero base - cannot calculate change. State totals may not equal some of counties due to data suppression to protect confidentiality and death for which the county of residence is not known.

## CHILD AND TEEN DEATHS (continued)

county name	1994-1996 Ages 1-14			1994-1996 Ages 15-19			1994-1996 Ages 1-19			2004-2006 Ages 1-14		
	three year number of deaths	average annual # of deaths	three year rate/100,000	three year number of deaths	average annual # of deaths	three year rate/100,000	three year number of deaths	average annual # of deaths	three year rate/100,000	three year number of deaths	average annual # of deaths	three year rate/100,000
Latimer	3	1	45.7	4	1	141.8	7	2	74.6	2	1	36.0
Le Flore	11	4	38.1	9	3	82.0	20	7	50.2	9	3	31.9
Lincoln	6	2	30.0	7	2	97.1	13	4	47.8	5	2	28.0
Logan	9	3	48.1	6	2	70.5	15	5	55.1	1	0	5.3
Love	2	1	39.5	2	1	102.6	4	1	57.0	0	0	0.0
McClain	6	2	37.7	6	2	98.5	12	4	54.5	7	2	42.4
McCurtain	5	2	21.4	13	4	153.2	18	6	56.5	7	2	34.6
McIntosh	0	0	0.0	2	1	53.3	2	1	14.9	5	2	53.2
Major	3	1	60.7	1	0	64.4	4	1	61.6	0	0	0.0
Marshall	4	1	65.2	3	1	113.9	7	2	79.9	2	1	27.0
Mayes	10	3	44.8	5	2	63.8	15	5	49.7	2	1	9.2
Murray	3	1	41.7	3	1	114.4	6	2	61.1	1	0	15.1
Muskogee	12	4	26.9	19	6	118.9	31	10	51.1	19	6	48.2
Noble	3	1	41.2	0	0	0.0	3	1	31.5	1	0	16.7
Nowata	1	0	17.6	1	0	48.5	2	1	25.8	1	0	17.4
Okfuskee	1	0	14.9	2	1	75.6	3	1	32.1	2	1	35.4
Oklahoma	148	49	38.5	130	43	97.9	278	93	53.8	102	34	25.0
Okmulgee	7	2	29.7	7	2	77.9	14	5	43.0	5	2	22.4
Osage	4	1	14.6	13	4	138.5	17	6	46.3	5	2	21.6
Ottawa	7	2	41.0	5	2	67.2	12	4	48.9	6	2	33.6
Pawnee	4	1	40.5	6	2	169.3	10	3	74.5	5	2	55.6
Payne	4	1	12.3	7	2	34.1	11	4	20.7	12	4	39.9
Pittsburg	12	4	50.2	13	4	143.8	25	8	75.9	12	4	55.5
Pontotoc	3	1	14.8	6	2	69.5	9	3	31.1	7	2	37.0
Pottawatomie	16	5	42.1	12	4	74.5	28	9	51.7	10	3	26.7
Pushmataha	1	0	14.9	3	1	122.3	4	1	43.6	1	0	16.6
Roger Mills	2	1	81.8	1	0	121.2	3	1	91.7	0	0	0.0
Rogers	9	3	22.6	12	4	83.6	21	7	38.7	13	4	28.5
Seminole	7	2	45.4	3	1	52.7	10	3	47.4	3	1	21.6
Sequoyah	7	2	30.2	9	3	103.8	16	5	50.2	7	2	29.9
Stephens	9	3	34.6	14	5	156.6	23	8	65.9	3	1	13.4
Texas	6	2	54.1	2	1	46.1	8	3	51.9	6	2	44.5
Tillman	3	1	46.2	0	0	0.0	3	1	34.3	3	1	66.1
Tulsa	107	36	33.0	87	29	79.9	194	65	44.8	76	25	22.1
Wagoner	10	3	27.9	13	4	99.0	23	8	46.9	10	3	27.0
Washington	6	2	21.1	10	3	108.0	16	5	42.5	6	2	24.0
Washita	3	1	40.4	3	1	123.2	6	2	60.9	0	0	0.0
Woods	2	1	45.4	1	0	49.1	3	1	46.5	0	0	0.0
Woodward	1	0	8.1	5	2	122.6	6	2	36.4	4	1	39.8

2004-2006 Ages 1-14 (cont.)		2004-2006 Ages 15-19					2004-2006 Ages 1-19				
three year rank	change over time	three year number of deaths	average annual # of deaths	three year rate/100,000	three year rank	changer over time	three year number of deaths	average annual # of deaths	three year rate/100,000	three year rank	change over time
50	21.2%	4	1	140.6	63	0.8%	6	2	71.5	63	4.2%
39	16.3%	16	5	153.3	65	-87.0%	25	8	64.7	61	-28.9%
33	6.7%	10	3	138.0	62	-42.0%	15	5	59.7	49	-25.0%
8	88.9%	5	2	53.0	19	24.8%	6	2	21.2	3	61.4%
tie for 1	100.0%	2	1	104.8	48	-2.1%	2	1	29.9	14	47.6%
56	-12.6%	7	2	109.6	51	-11.3%	14	5	61.1	55	-12.2%
46	-62.0%	10	3	132.6	61	13.4%	17	6	61.2	56	-8.4%
62	###	3	1	78.8	31	-47.9%	8	3	60.6	51	-307.0%
tie for 1	100.0%	2	1	129.6	58	-101.3%	2	1	40.4	25	34.4%
30	58.7%	2	1	74.0	29	35.0%	4	1	39.5	24	50.5%
9	79.4%	8	3	94.4	41	-47.9%	10	3	33.1	17	33.4%
11	63.8%	4	1	176.5	68	-54.3%	5	2	56.3	47	7.9%
61	-79.3%	9	3	63.0	23	47.0%	28	9	52.1	42	-1.9%
13	59.5%	1	0	43.7	16	###	2	1	24.1	6	23.3%
14	1.3%	0	0	0.0	tie for 1	100.0%	1	0	12.4	2	51.8%
48	-136.5%	4	1	177.9	69	-135.2%	6	2	75.9	67	-136.2%
27	35.2%	89	30	65.9	26	32.7%	191	64	35.1	21	34.7%
23	24.5%	9	3	99.4	44	-27.6%	14	5	44.7	34	-3.8%
19	-47.7%	6	2	59.8	22	56.8%	11	4	33.2	18	28.3%
42	18.0%	8	3	100.3	45	-49.1%	14	5	54.2	44	-10.8%
66	-37.3%	3	1	82.1	36	51.5%	8	3	63.3	60	15.1%
54	-224.6%	9	3	43.4	15	-27.3%	21	7	41.3	28	-99.4%
65	-10.6%	10	3	116.5	54	19.0%	22	7	72.8	65	4.0%
51	-150.2%	8	3	103.1	47	-48.4%	15	5	56.3	46	-80.7%
29	36.6%	6	2	38.8	12	47.9%	16	5	30.2	15	41.6%
12	-11.8%	4	1	155.1	66	-26.8%	5	2	58.2	48	-33.4%
tie for 1	100.0%	2	1	336.1	76	-177.3%	2	1	90.3	70	1.5%
35	-26.2%	13	4	71.2	27	14.8%	26	9	40.7	27	-5.1%
20	52.3%	7	2	129.1	57	-144.9%	10	3	51.8	40	-9.5%
37	1.0%	10	3	115.0	53	-10.8%	17	6	52.9	43	-5.4%
10	61.4%	5	2	58.7	21	62.5%	8	3	25.9	9	60.7%
57	17.8%	5	2	110.0	52	-138.5%	11	4	61.0	54	-17.6%
71	-42.9%	1	0	47.0	17	###	4	1	60.0	50	-75.1%
22	33.1%	110	37	96.6	42	-21.0%	186	62	40.6	26	9.3%
31	3.2%	8	3	57.9	20	41.5%	18	6	35.4	22	24.6%
26	-13.6%	3	1	29.2	9	73.0%	9	3	25.5	8	39.9%
tie for 1	100.0%	2	1	79.9	33	35.1%	2	1	23.8	5	60.9%
tie for 1	100.0%	0	0	0.0	tie for 1	100.0%	0	0	0.0	1	100.0%
52	-393.4%	1	0	25.0	8	79.6%	5	2	35.6	23	2.3%

Savings derived from using post-consumer recycled fiber in lieu of virgin fiber in the Oklahoma KIDS COUNT FACTBOOK:



Trees not cut down



Solid waste not generated



Water-borne waste not created



Net greenhouse gases prevented



Wastewater flow saved



Energy not consumed

Savings derived from choosing a paper made from wind power in the Oklahoma KIDS COUNT FACTBOOK

This amount of wind energy is equivalent to:



Natural gas unused



Trees planted



XXXX

Not driven in an average car





