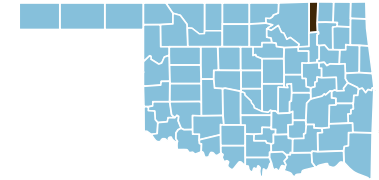


# Washington County



County Seat: **Bartlesville**

Number of Children (2003): 11,631

Number of Poor Children (2002): 1,875

Economic Cluster #1: Wealthiest

Children are 23.7% of the county population

Child Poverty Rate (2002): 16.0%

Indicator	Base Data	-	Worsened	Improved	+	Recent Data	Rank
<b>Birthweight</b>							
Low Birthweight (under 5½ lbs)	6.8% of live births, 1994-1996				0.3%	6.8% of live births, 2001-2003	23
Very Low Birthweight (under 3lbs,5oz)	0.5% of live births, 1994-1996	-76.2%				0.9% of live births, 2001-2003	19
<b>Births to Teens</b>							
Births to Young Teens (ages 15-17)	29.4 per 1000 girls 15-17, 1994-1996				20.0%	23.5 per 1000 girls 15-17, 2001-2003	26
Births to Older Teens (ages 18-19)	99.4 per 1000 girls 18-19, 1994-1996				20.2%	79.2 per 1000 girls 18-19, 2001-2003	19
Births to Teens (ages 15-19)	53.4 per 1000 girls 15-19, 1994-1996				15.3%	45.2 per 1000 girls 15-19, 2001-2003	18
<b>Child Abuse &amp; Neglect</b>	23.1 confirmed per 1000 children, FY 1995-1997				9.0%	21.0 confirmed per 1000 children, FY 2002-04	55
<b>High School Dropouts</b>	3.3% of grades 9-12, SY 2001/02-2003/04					<i>Trend data available in future Factbooks</i>	N/A
<b>Juvenile Violent Crime Arrests</b>	253.3 per 100,000 youths 10-17, 1994-1996				50.4%	125.7 per 100,000 youths 10-17, 2001-2003	39
<b>Mortality</b>							
Infant Mortality (under age 1)	7.7 per 1000 live births, 1994-1996				4.6%	7.3 per 1000 live births, 2001-2003	42
Child Death (age 1-14)	21.1 per 100,000 children 1-14, 1994-1996	-75.8%				37.2 per 100,000 children 1-14, 2001-2003	50
Teen Death (ages 15-19)	108.0 per 100,000 teens 15-19, 1994-1996	-25.9%				136.0 per 100,000 teens 15-19, 2001-2003	65
Child and Teen Death (ages 1-19)	42.5 per 100,000 youth 1-19, 1994-1996	-55.0%				65.9 per 100,000 youth 1-19, 2001-2003	62
<b>Economic Cluster</b>	76 Economic Index, 1994-1996				0.0%	76 Economic Index, 2001-2003	14

Change of more than 110%—positive or negative—are graphed with broken bar

■ state change

■ county change

### = zero base - cannot calculate change

County Rank (1 = best) (77 = worst)

## County Health Indicators

### Health Resources

The following medical facilities are physically located within Washington County

YES	Hospital serving general population
NO	Hospital specializing in care for specific population, procedure or condition
YES	County or City/County Health Department
YES	Non-health dept. community-based clinic receiving selected federal funding
NO	Community Health Center
NO	Clinic or health center serving native population
YES	Community Mental Health Center

The following medical practitioners are located in Washington County

83	Physicians	( 1.7 per 1000 people)
658	Nurses	( 13.4 per 1000 people)
23	Dentists	( 0.5 per 1000 people)

The following community partnerships serve Washington County

YES	Turning Point
YES	Systems of Care

### Health Status

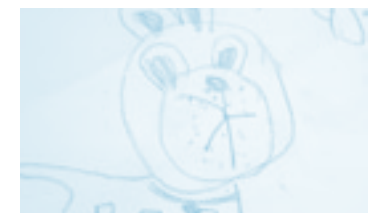
Rate		Rank
72.6%	Birth mothers received adequate prenatal care	14
3.2/10,000	Infants/Toddlers exposed to lead	43
56.1%*	Two-year olds immunized	tied for 63
95.0%	Eligible children covered by Medicaid/SCHIP	36
863.0/100,000	Juvenile arrests for drug & alcohol related offenses	41
34.3/100,000	Children & teen deaths from disease	73

\*2003 data displayed. May be low due to vaccine shortage.

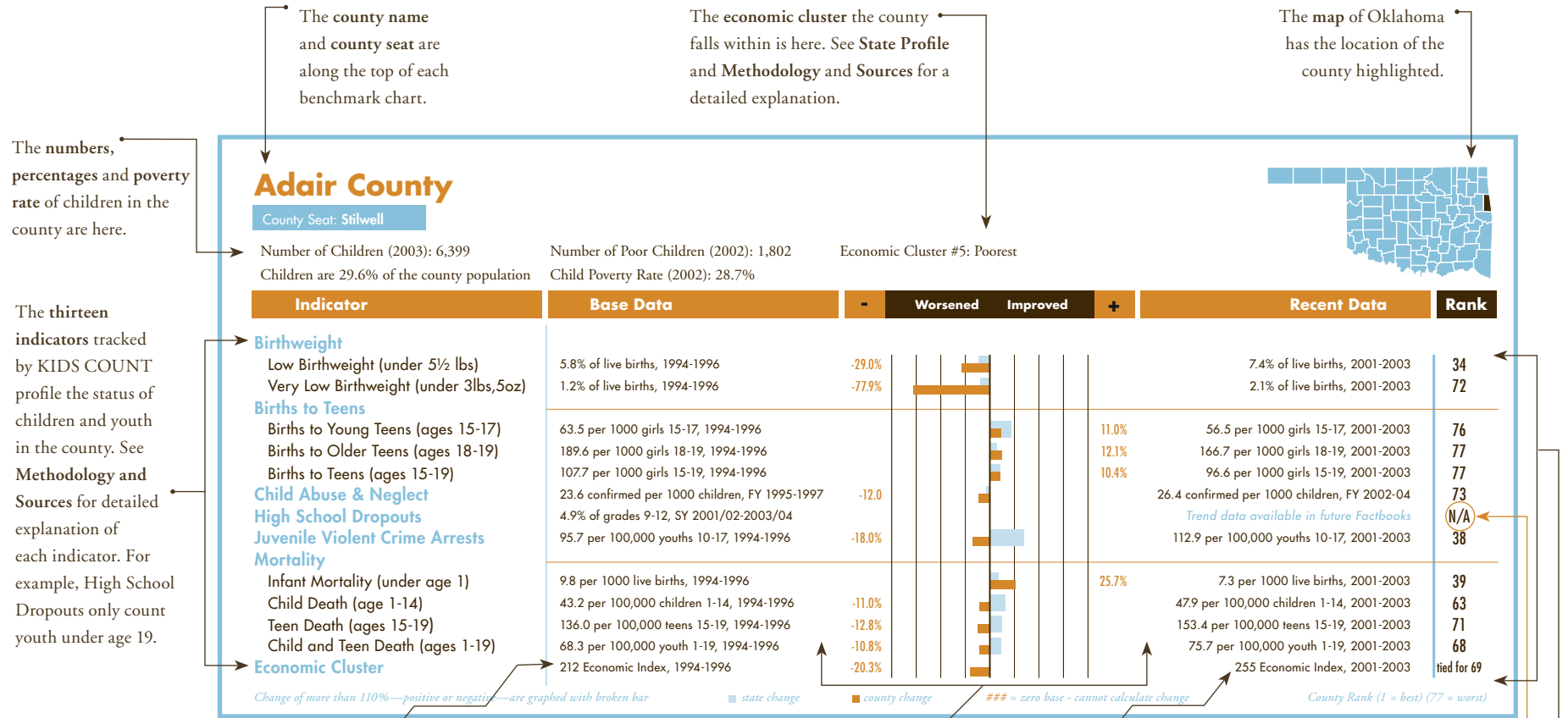
### Overall Health Status Rank

**66**

None of Washington County is designated as a medically underserved area.



# COUNTY BENCHMARK KEY: A Comprehensive Guide to Understanding Data



Base data for each indicator presents a rate for a previous three-year period when data comparable to that measured currently was available. Each item specifies the base rate and period in which it was collected.

The bar chart shows the percent change between the base data and the recent data for each indicator. If the bar goes to the left of center, the county rate has worsened. If the bar goes to the right of center, the county rate has improved. The wider bar behind the bar chart is the state rate for that indicator and allows you to compare the county with the state as a whole.

Recent Data for each indicator presents a rate for the most recent three years. Each item specifies the recent rate and period in which it was collected.

Oklahoma's methodology for counting high school dropouts has changed preventing comparisons over time. Trend data will be available on future Factbooks.

The county is ranked on each indicator to allow you to compare rates for the county with other counties. 1 is the best ranking; 77 is the worst ranking.

# COUNTY BENCHMARK KEY: A Comprehensive Guide to Understanding Data

Medical Facilities catalog the bricks and mortar of the county health system, noting which of the seven resources are physically located in the county. See Data tables for detailed explanation.

### County Health Indicators

#### Health Resources

The following medical facilities are physically located within Adair County

YES	Hospital serving general population
NO	Hospital specializing in care for specific population, procedure or condition
YES	County or City/County Health Department
NO	Non-health dept. community-based clinic receiving selected federal funding
NO	Community Health Center
YES	Clinic or health center serving native population
YES	Community Mental Health Center

#### Medical Practitioners

The following medical practitioners are located in Adair County

14	Physicians	(0.7 per 1000 people)
163	Nurses	(7.6 per 1000 people)
5	Dentists	(0.2 per 1000 people)

#### Community Partnerships

The following community partnerships serve Adair County

NO	Turning Point
NO	Systems of Care

---


Health Status	Rate	Rank
Birth mothers received adequate prenatal care	51.5%	65
Infants/Toddlers exposed to lead	0.0/10,000	tied for 1
Two-year olds immunized	64.9%*	44
Eligible children covered by Medicaid/SCHIP	96.1%	33
Juvenile arrests for drug & alcohol related offenses	372.5/100,000	12
Children & teen deaths from disease	15.1/100,000	46

\*2003 data displayed. May be low due to vaccine shortage.

### Overall Health Status Rank

**Tied for 23**

All of Adair County is designated as a medically underserved area.



Community Partnerships report whether the county is involved in one of Oklahoma's two major health-related community-based initiatives. See Data Tables for detailed explanation.

Medical Practitioners count providers by type, noting how many are available for every 1,000 county residents. See Data Tables for detailed explanation.

Six new indicators profile the status of child health in the county. See Methodology and Sources for a detailed explanation of each indicator. Recent Data for each new indicator presents a rate and a county ranking for the most recent time period available.

The Medically Underserved Area designation reports whether all or part of the county suffers from a severe lack of health resources.

The County is ranked on the combined Child Health Status indicators to allow you to compare this county with other counties. 1 is the best ranking; 77 is the worst ranking

Cool illustrations by Nathan and Tanner Bostian