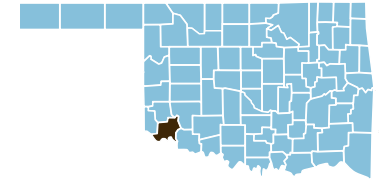


# Jackson County



County Seat: Altus

Number of Children (2003): 7,820  
Children are 28.6% of the county population

Number of Poor Children (2002): 1,572  
Child Poverty Rate (2002): 20.1%

Economic Cluster #2: Wealthier

Indicator	Base Data	-	Worsened	Improved	+	Recent Data	Rank
<b>Birthweight</b>							
Low Birthweight (under 5½ lbs)	6.1% of live births, 1994-1996	-41.0%				8.6% of live births, 2001-2003	58
Very Low Birthweight (under 3lbs,5oz)	0.8% of live births, 1994-1996	-81.5%				1.4% of live births, 2001-2003	56
<b>Births to Teens</b>							
Births to Young Teens (ages 15-17)	47.4 per 1000 girls 15-17, 1994-1996				15.6%	40.0 per 1000 girls 15-17, 2001-2003	70
Births to Older Teens (ages 18-19)	126.0 per 1000 girls 18-19, 1994-1996				8.4%	115.5 per 1000 girls 18-19, 2001-2003	51
Births to Teens (ages 15-19)	78.9 per 1000 girls 15-19, 1994-1996				12.1%	69.3 per 1000 girls 15-19, 2001-2003	64
<b>Child Abuse &amp; Neglect</b>	15.5 confirmed per 1000 children, FY 1995-1997				13.0%	13.5 confirmed per 1000 children, FY 2002-04	29
<b>High School Dropouts</b>	3.2% of grades 9-12, SY 2001/02-2003/04					<i>Trend data available in future Factbooks</i>	N/A
<b>Juvenile Violent Crime Arrests</b>	182.4 per 100,000 youths 10-17, 1994-1996				5.2%	173.0 per 100,000 youths 10-17, 2001-2003	53
<b>Mortality</b>							
Infant Mortality (under age 1)	7.7 per 1000 live births, 1994-1996				4.5%	7.4 per 1000 live births, 2001-2003	43
Child Death (age 1-14)	23.7 per 100,000 children 1-14, 1994-1996				31.7%	16.2 per 100,000 children 1-14, 2001-2003	10
Teen Death (ages 15-19)	157.7 per 100,000 teens 15-19, 1994-1996				50.5%	78.1 per 100,000 teens 15-19, 2001-2003	40
Child and Teen Death (ages 1-19)	57.0 per 100,000 youth 1-19, 1994-1996				43.7%	32.1 per 100,000 youth 1-19, 2001-2003	19
<b>Economic Cluster</b>	153 Economic Index, 1994-1996				38.6%	94 Economic Index, 2001-2003	22

Change of more than 110%—positive or negative—are graphed with broken bar

■ state change

■ county change

### = zero base - cannot calculate change

County Rank (1 = best) (77 = worst)

## County Health Indicators

### Health Resources

The following medical facilities are physically located within Jackson County

YES	Hospital serving general population
YES	Hospital specializing in care for specific population, procedure or condition
YES	County or City/County Health Department
NO	Non-health dept. community-based clinic receiving selected federal funding
NO	Community Health Center
NO	Clinic or health center serving native population
YES	Community Mental Health Center

The following medical practitioners are located in Jackson County

35	Physicians	( 1.3 per 1000 people)
386	Nurses	( 14.1 per 1000 people)
9	Dentists	( 0.3 per 1000 people)

The following community partnerships serve Jackson County

YES	Turning Point
NO	Systems of Care

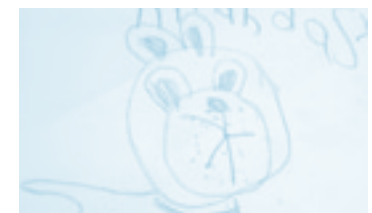
### Health Status

Rate		Rank
79.3%	Birth mothers received adequate prenatal care	3
12.3/10,000	Infants/Toddlers exposed to lead	62
74.1%	Two-year olds immunized	tied for 7
75.2%	Eligible children covered by Medicaid/SCHIP	65
326.8/100,000	Juvenile arrests for drug & alcohol related offenses	10
8.0/100,000	Children & teen deaths from disease	18

### Overall Health Status Rank

13

None of Jackson County is designated as a medically underserved area.



# COUNTY BENCHMARK KEY: A Comprehensive Guide to Understanding Data



# COUNTY BENCHMARK KEY: A Comprehensive Guide to Understanding Data

Medical Facilities catalog the bricks and mortar of the county health system, noting which of the seven resources are physically located in the county. See Data tables for detailed explanation.

### County Health Indicators

#### Health Resources

The following medical facilities are physically located within Adair County

YES	Hospital serving general population
NO	Hospital specializing in care for specific population, procedure or condition
YES	County or City/County Health Department
NO	Non-health dept. community-based clinic receiving selected federal funding
NO	Community Health Center
YES	Clinic or health center serving native population
YES	Community Mental Health Center

#### Medical Practitioners

The following medical practitioners are located in Adair County

14	Physicians	(0.7 per 1000 people)
163	Nurses	(7.6 per 1000 people)
5	Dentists	(0.2 per 1000 people)

#### Community Partnerships

The following community partnerships serve Adair County

NO	Turning Point
NO	Systems of Care

---

Health Status	Rate		Rank
	51.5%	Birth mothers received adequate prenatal care	65
	0.0/10,000	Infants/Toddlers exposed to lead	tied for 1
	64.9%*	Two-year olds immunized	44
	96.1%	Eligible children covered by Medicaid/SCHIP	33
	372.5/100,000	Juvenile arrests for drug & alcohol related offenses	12
	15.1/100,000	Children & teen deaths from disease	46

\*2003 data displayed. May be low due to vaccine shortage.

### Overall Health Status Rank

**Tied for 23**

All of Adair County is designated as a medically underserved area.



Community Partnerships report whether the county is involved in one of Oklahoma's two major health-related community-based initiatives. See Data Tables for detailed explanation.

Medical Practitioners count providers by type, noting how many are available for every 1,000 county residents. See Data Tables for detailed explanation.

Six new indicators profile the status of child health in the county. See Methodology and Sources for a detailed explanation of each indicator. Recent Data for each new indicator presents a rate and a county ranking for the most recent time period available.

The Medically Underserved Area designation reports whether all or part of the county suffers from a severe lack of health resources.

The County is ranked on the combined Child Health Status indicators to allow you to compare this county with other counties. 1 is the best ranking; 77 is the worst ranking

Cool illustrations by Nathan and Tanner Bostian