

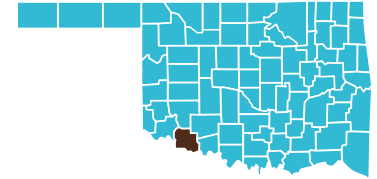
Tillman County

County Seat: Frederick

Number of Children (2003): 2,251
Children are 25.5% of the county population

Number of Poor Children (2002): 581
Child Poverty Rate (2002): 26.8%

Economic Cluster #5: Poorest



Indicator	Base Data	-	Worsened	Improved	+	Recent Data	Rank
Birthweight							
Low Birthweight (under 5½ lbs)	7.3% of live births, 1994-1996				27.4%	5.3% of live births, 2001-2003	3
Very Low Birthweight (under 3lbs,5oz)	1.0% of live births, 1994-1996				69.0%	0.3% of live births, 2001-2003	7
Births to Teens							
Births to Young Teens (ages 15-17)	65.7 per 1000 girls 15-17, 1994-1996				40.2%	39.3 per 1000 girls 15-17, 2001-2003	68
Births to Older Teens (ages 18-19)	160.3 per 1000 girls 18-19, 1994-1996				19.5%	129.1 per 1000 girls 18-19, 2001-2003	65
Births to Teens (ages 15-19)	97.7 per 1000 girls 15-19, 1994-1996				27.2%	71.2 per 1000 girls 15-19, 2001-2003	67
Child Abuse & Neglect	11.7 confirmed per 1000 children, FY 1995-1997	-31.3%				15.3 confirmed per 1000 children, FY 2002-04	35
High School Dropouts	3.4% of grades 9-12, SY 2001/02-2003/04					<i>Trend data available in future Factbooks</i>	N/A
Juvenile Violent Crime Arrests	660.9 per 100,000 youths 10-17, 1994-1996				36.1%	422.7 per 100,000 youths 10-17, 2001-2003	73
Mortality							
Infant Mortality (under age 1)	7.5 per 1000 live births, 1994-1996	-65.2%				12.4 per 1000 live births, 2001-2003	67
Child Death (age 1-14)	46.2 per 100,000 children 1-14, 1994-1996				15.1%	39.3 per 100,000 children 1-14, 2001-2003	54
Teen Death (ages 15-19)	0.0 per 100,000 teens 15-19, 1994-1996				###	44.1 per 100,000 teens 15-19, 2001-2003	15
Child and Teen Death (ages 1-19)	34.3 per 100,000 youth 1-19, 1994-1996	-19.0%				40.8 per 100,000 youth 1-19, 2001-2003	31
Economic Cluster	208 Economic Index, 1994-1996				9.1%	189 Economic Index, 2001-2003	tied for 47

Change of more than 110%—positive or negative—are graphed with broken bar

■ state change

■ county change

= zero base - cannot calculate change

County Rank (1 = best) (77 = worst)

County Health Indicators

Health Resources

The following medical facilities are physically located within Tillman County

YES	Hospital serving general population
NO	Hospital specializing in care for specific population, procedure or condition
YES	County or City/County Health Department
NO	Non-health dept. community-based clinic receiving selected federal funding
YES	Community Health Center
NO	Clinic or health center serving native population
NO	Community Mental Health Center

The following medical practitioners are located in Tillman County

3	Physicians	(0.3 per 1000 people)
67	Nurses	(7.5 per 1000 people)
2	Dentists	(0.2 per 1000 people)

The following community partnerships serve Tillman County

YES	Turning Point
NO	Systems of Care

Health Status

Rate		Rank
77.3%	Birth mothers received adequate prenatal care	4
16.4/10,000	Infants/Toddlers exposed to lead	66
60.0%*	Two-year olds immunized	tied for 56
91.0%	Eligible children covered by Medicaid/SCHIP	47
1,408.8/100,000	Juvenile arrests for drug & alcohol related offenses	70
13.6/100,000	Children & teen deaths from disease	38

*2003 data displayed. May be low due to vaccine shortage.

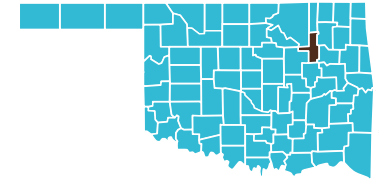
Overall Health Status Rank

67

All of Tillman County is designated as a medically underserved area.



Tulsa County



County Seat: **Tulsa**

Number of Children (2003): 149,226
Children are 26.2% of the county population

Number of Poor Children (2002): 26,701
Child Poverty Rate (2002): 17.9%

Economic Cluster #2: Wealthier

Indicator	Base Data	-	Worsened	Improved	+	Recent Data	Rank
Birthweight							
Low Birthweight (under 5½ lbs)	7.3% of live births, 1994-1996	-8.7%				7.9% of live births, 2001-2003	47
Very Low Birthweight (under 3lbs,5oz)	1.4% of live births, 1994-1996				2.0%	1.3% of live births, 2001-2003	50
Births to Teens							
Births to Young Teens (ages 15-17)	39.8 per 1000 girls 15-17, 1994-1996				18.8%	32.3 per 1000 girls 15-17, 2001-2003	51
Births to Older Teens (ages 18-19)	102.4 per 1000 girls 18-19, 1994-1996	-0.6%				102.9 per 1000 girls 18-19, 2001-2003	33
Births to Teens (ages 15-19)	64.5 per 1000 girls 15-19, 1994-1996				6.7%	60.2 per 1000 girls 15-19, 2001-2003	40
Child Abuse & Neglect	8.7 confirmed per 1000 children, FY 1995-1997				1.9%	8.5 confirmed per 1000 children, FY 2002-04	6
High School Dropouts	4.3% of grades 9-12, SY 2001/02-2003/04					<i>Trend data available in future Factbooks</i>	N/A
Juvenile Violent Crime Arrests	588.1 per 100,000 youths 10-17, 1994-1996				13.6%	508.2 per 100,000 youths 10-17, 2001-2003	76
Mortality							
Infant Mortality (under age 1)	9.4 per 1000 live births, 1994-1996				17.1%	7.8 per 1000 live births, 2001-2003	47
Child Death (age 1-14)	33.0 per 100,000 children 1-14, 1994-1996				27.5%	23.9 per 100,000 children 1-14, 2001-2003	24
Teen Death (ages 15-19)	79.9 per 100,000 teens 15-19, 1994-1996				10.1%	71.8 per 100,000 teens 15-19, 2001-2003	32
Child and Teen Death (ages 1-19)	44.8 per 100,000 youth 1-19, 1994-1996				19.6%	36.0 per 100,000 youth 1-19, 2001-2003	23
Economic Cluster	89 Economic Index, 1994-1996	-21.3%				108 Economic Index, 2001-2003	23

Change of more than 110%—positive or negative—are graphed with broken bar

■ state change

■ county change

= zero base - cannot calculate change

County Rank (1 = best) (77 = worst)

County Health Indicators

Health Resources

The following medical facilities are physically located within **Tulsa County**

YES	Hospital serving general population
YES	Hospital specializing in care for specific population, procedure or condition
YES	County or City/County Health Department
NO	Non-health dept. community-based clinic receiving selected federal funding
YES	Community Health Center
YES	Clinic or health center serving native population
YES	Community Mental Health Center

The following medical practitioners are located in **Tulsa County**

1,815	Physicians	(3.2 per 1000 people)
7,042	Nurses	(12.3 per 1000 people)
375	Dentists	(0.7 per 1000 people)

The following community partnerships serve **Tulsa County**

YES	Turning Point
YES	Systems of Care

Health Status

Rate		Rank
51.1%	Birth mothers received adequate prenatal care	67
2.7/10,000	Infants/Toddlers exposed to lead	40
63.2%	Two-year olds immunized	tie for 47
90.8%	Eligible children covered by Medicaid/SCHIP	48
960.6/100,000	Juvenile arrests for drug & alcohol related offenses	50
16.8/100,000	Children & teen deaths from disease	50

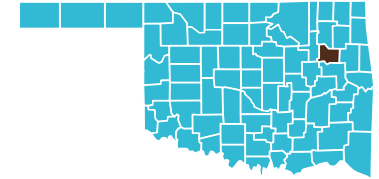
Overall Health Status Rank

Tied for 73



Part of **Tulsa County** is designated as a medically underserved area.

Wagoner County



County Seat: Wagoner

Number of Children (2003): 16,087

Number of Poor Children (2002): 2,307

Economic Cluster #2: Wealthier

Children are 26.0% of the county population

Child Poverty Rate (2002): 14.3%

Indicator	Base Data	-	Worsened	Improved	+	Recent Data	Rank
Birthweight							
Low Birthweight (under 5½ lbs)	6.8% of live births, 1994-1996	-8.9%				7.4% of live births, 2001-2003	33
Very Low Birthweight (under 3lbs,5oz)	1.4% of live births, 1994-1996				10.3%	1.3% of live births, 2001-2003	47
Births to Teens							
Births to Young Teens (ages 15-17)	27.1 per 1000 girls 15-17, 1994-1996				30.9%	18.7 per 1000 girls 15-17, 2001-2003	13
Births to Older Teens (ages 18-19)	105.8 per 1000 girls 18-19, 1994-1996				26.3%	78.0 per 1000 girls 18-19, 2001-2003	18
Births to Teens (ages 15-19)	52.3 per 1000 girls 15-19, 1994-1996				21.7%	41.0 per 1000 girls 15-19, 2001-2003	15
Child Abuse & Neglect	10.0 confirmed per 1000 children, FY 1995-1997	-24.1%				12.4 confirmed per 1000 children, FY 2002-04	25
High School Dropouts	4.1% of grades 9-12, SY 2001/02-2003/04					<i>Trend data available in future Factbooks</i>	N/A
Juvenile Violent Crime Arrests	70.3 per 100,000 youths 10-17, 1994-1996	-48.4%				104.3 per 100,000 youths 10-17, 2001-2003	33
Mortality							
Infant Mortality (under age 1)	7.2 per 1000 live births, 1994-1996	-11.4%				8.0 per 1000 live births, 2001-2003	tied for 49
Child Death (age 1-14)	27.9 per 100,000 children 1-14, 1994-1996				32.6%	18.8 per 100,000 children 1-14, 2001-2003	12
Teen Death (ages 15-19)	99.0 per 100,000 teens 15-19, 1994-1996				35.2%	64.1 per 100,000 teens 15-19, 2001-2003	27
Child and Teen Death (ages 1-19)	46.9 per 100,000 youth 1-19, 1994-1996				33.5%	31.2 per 100,000 youth 1-19, 2001-2003	17
Economic Cluster	71 Economic Index, 1994-1996	-29.6%				92 Economic Index, 2001-2003	21

Change of more than 110%—positive or negative—are graphed with broken bar

■ state change

■ county change

= zero base - cannot calculate change

County Rank (1 = best) (77 = worst)

County Health Indicators

Health Resources

The following medical facilities are physically located within Wagoner County

YES	Hospital serving general population
NO	Hospital specializing in care for specific population, procedure or condition
YES	County or City/County Health Department
NO	Non-health dept. community-based clinic receiving selected federal funding
NO	Community Health Center
NO	Clinic or health center serving native population
YES	Community Mental Health Center

The following medical practitioners are located in Wagoner County

24	Physicians	(0.4 per 1000 people)
302	Nurses	(5.0 per 1000 people)
9	Dentists	(0.1 per 1000 people)

The following community partnerships serve Wagoner County

YES	Turning Point
NO	Systems of Care

Health Status

Rate		Rank
55.2%	Birth mothers received adequate prenatal care	58
2.3/10,000	Infants/Toddlers exposed to lead	38
50.5%*	Two-year olds immunized	69
83.0%	Eligible children covered by Medicaid/SCHIP	57
439.0/100,000	Juvenile arrests for drug & alcohol related offenses	17
17.5/100,000	Children & teen deaths from disease	52

*2003 data displayed. May be low due to vaccine shortage.

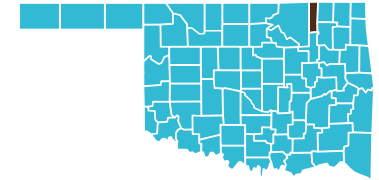
Overall Health Status Rank

71

Part of Wagoner County is designated as a medically underserved area.



Washington County



County Seat: **Bartlesville**

Number of Children (2003): 11,631

Number of Poor Children (2002): 1,875

Economic Cluster #1: Wealthiest

Children are 23.7% of the county population

Child Poverty Rate (2002): 16.0%

Indicator	Base Data	-	Worsened	Improved	+	Recent Data	Rank
Birthweight							
Low Birthweight (under 5½ lbs)	6.8% of live births, 1994-1996				0.3%	6.8% of live births, 2001-2003	23
Very Low Birthweight (under 3lbs,5oz)	0.5% of live births, 1994-1996	-76.2%				0.9% of live births, 2001-2003	19
Births to Teens							
Births to Young Teens (ages 15-17)	29.4 per 1000 girls 15-17, 1994-1996				20.0%	23.5 per 1000 girls 15-17, 2001-2003	26
Births to Older Teens (ages 18-19)	99.4 per 1000 girls 18-19, 1994-1996				20.2%	79.2 per 1000 girls 18-19, 2001-2003	19
Births to Teens (ages 15-19)	53.4 per 1000 girls 15-19, 1994-1996				15.3%	45.2 per 1000 girls 15-19, 2001-2003	18
Child Abuse & Neglect	23.1 confirmed per 1000 children, FY 1995-1997				9.0%	21.0 confirmed per 1000 children, FY 2002-04	55
High School Dropouts	3.3% of grades 9-12, SY 2001/02-2003/04					<i>Trend data available in future Factbooks</i>	N/A
Juvenile Violent Crime Arrests	253.3 per 100,000 youths 10-17, 1994-1996				50.4%	125.7 per 100,000 youths 10-17, 2001-2003	39
Mortality							
Infant Mortality (under age 1)	7.7 per 1000 live births, 1994-1996				4.6%	7.3 per 1000 live births, 2001-2003	42
Child Death (age 1-14)	21.1 per 100,000 children 1-14, 1994-1996	-75.8%				37.2 per 100,000 children 1-14, 2001-2003	50
Teen Death (ages 15-19)	108.0 per 100,000 teens 15-19, 1994-1996	-25.9%				136.0 per 100,000 teens 15-19, 2001-2003	65
Child and Teen Death (ages 1-19)	42.5 per 100,000 youth 1-19, 1994-1996	-55.0%				65.9 per 100,000 youth 1-19, 2001-2003	62
Economic Cluster	76 Economic Index, 1994-1996				0.0%	76 Economic Index, 2001-2003	14

Change of more than 110%—positive or negative—are graphed with broken bar

■ state change

■ county change

= zero base - cannot calculate change

County Rank (1 = best) (77 = worst)

County Health Indicators

Health Resources

The following medical facilities are physically located within Washington County

YES	Hospital serving general population
NO	Hospital specializing in care for specific population, procedure or condition
YES	County or City/County Health Department
YES	Non-health dept. community-based clinic receiving selected federal funding
NO	Community Health Center
NO	Clinic or health center serving native population
YES	Community Mental Health Center

The following medical practitioners are located in Washington County

83	Physicians	(1.7 per 1000 people)
658	Nurses	(13.4 per 1000 people)
23	Dentists	(0.5 per 1000 people)

The following community partnerships serve Washington County

YES	Turning Point
YES	Systems of Care

Health Status

Rate		Rank
72.6%	Birth mothers received adequate prenatal care	14
3.2/10,000	Infants/Toddlers exposed to lead	43
56.1%*	Two-year olds immunized	tied for 63
95.0%	Eligible children covered by Medicaid/SCHIP	36
863.0/100,000	Juvenile arrests for drug & alcohol related offenses	41
34.3/100,000	Children & teen deaths from disease	73

*2003 data displayed. May be low due to vaccine shortage.

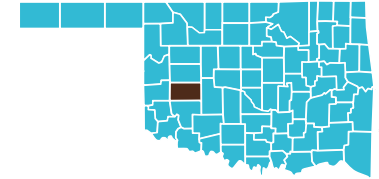
Overall Health Status Rank

66

None of Washington County is designated as a medically underserved area.



Washita County



County Seat: **Cordell**

Number of Children (2003): 2,678
Children are 23.8% of the county population

Number of Poor Children (2002): 559
Child Poverty Rate (2002): 20.7%

Economic Cluster #4: Poorer

Indicator	Base Data	-	Worsened	Improved	+	Recent Data	Rank
Birthweight							
Low Birthweight (under 5½ lbs)	6.8% of live births, 1994-1996	-7.2%				7.3% of live births, 2001-2003	31
Very Low Birthweight (under 3lbs,5oz)	1.9% of live births, 1994-1996				34.0%	1.3% of live births, 2001-2003	43
Births to Teens							
Births to Young Teens (ages 15-17)	21.2 per 1000 girls 15-17, 1994-1996	-15.0%				24.4 per 1000 girls 15-17, 2001-2003	30
Births to Older Teens (ages 18-19)	142.5 per 1000 girls 18-19, 1994-1996				42.7%	81.7 per 1000 girls 18-19, 2001-2003	21
Births to Teens (ages 15-19)	57.1 per 1000 girls 15-19, 1994-1996				19.3%	46.1 per 1000 girls 15-19, 2001-2003	21
Child Abuse & Neglect	12.0 confirmed per 1000 children, FY 1995-1997				2.3%	11.7 confirmed per 1000 children, FY 2002-04	18
High School Dropouts	0.9% of grades 9-12, SY 2001/02-2003/04					<i>Trend data available in future Factbooks</i>	N/A
Juvenile Violent Crime Arrests	193.7 per 100,000 youths 10-17, 1994-1996				51.9%	93.3 per 100,000 youths 10-17, 2001-2003	28
Mortality							
Infant Mortality (under age 1)	11.0 per 1000 live births, 1994-1996				7.6%	10.1 per 1000 live births, 2001-2003	60
Child Death (age 1-14)	40.4 per 100,000 children 1-14, 1994-1996				60.6%	15.9 per 100,000 children 1-14, 2001-2003	8
Teen Death (ages 15-19)	123.2 per 100,000 teens 15-19, 1994-1996				11.6%	108.9 per 100,000 teens 15-19, 2001-2003	56
Child and Teen Death (ages 1-19)	60.9 per 100,000 youth 1-19, 1994-1996				27.3%	44.3 per 100,000 youth 1-19, 2001-2003	36
Economic Cluster	171 Economic Index, 1994-1996				1.8%	168 Economic Index, 2001-2003	tied for 44

Change of more than 110%—positive or negative—are graphed with broken bar

■ state change

■ county change

= zero base - cannot calculate change

County Rank (1 = best) (77 = worst)

County Health Indicators

Health Resources

The following medical facilities are physically located within **Washita County**

YES	Hospital serving general population
NO	Hospital specializing in care for specific population, procedure or condition
NO	County or City/County Health Department
NO	Non-health dept. community-based clinic receiving selected federal funding
NO	Community Health Center
NO	Clinic or health center serving native population
NO	Community Mental Health Center

The following medical practitioners are located in **Washita County**

3	Physicians	(0.3 per 1000 people)
156	Nurses	(13.6 per 1000 people)
2	Dentists	(0.2 per 1000 people)

The following medical practitioners are located in **Washita County**

NO	Turning Point
YES	Systems of Care

Health Status

Rate

57.3%	Birth mothers received adequate prenatal care
0.0/10,000	Infants/Toddlers exposed to lead
58.2%	Two-year olds immunized
75.4%	Eligible children covered by Medicaid/SCHIP
419.7/100,000	Juvenile arrests for drug & alcohol related offenses
0.0/100,000	Children & teen deaths from disease

Rank

53
tied for 1
61
64
14
tied for 1

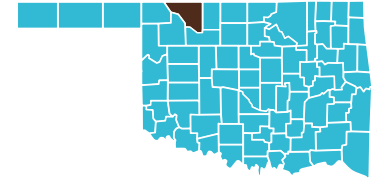
Overall Health Status Rank

22

All of **Washita County** is designated as a medically underserved area.



Woods County



County Seat: Alva

Number of Children (2003): 1,563
Children are 18.0% of the county population

Number of Poor Children (2002): 304
Child Poverty Rate (2002): 19.8%

Economic Cluster #3: Middle

Indicator	Base Data	-	Worsened	Improved	+	Recent Data	Rank
Birthweight							
Low Birthweight (under 5½ lbs)	7.0% of live births, 1994-1996					5.0% of live births, 2001-2003	2
Very Low Birthweight (under 3lbs,5oz)	0.0% of live births, 1994-1996					1.5% of live births, 2001-2003	63
Births to Teens							
Births to Young Teens (ages 15-17)	14.7 per 1000 girls 15-17, 1994-1996					3.9 per 1000 girls 15-17, 2001-2003	1
Births to Older Teens (ages 18-19)	33.7 per 1000 girls 18-19, 1994-1996	-14.7%				38.7 per 1000 girls 18-19, 2001-2003	3
Births to Teens (ages 15-19)	25.7 per 1000 girls 15-19, 1994-1996					20.6 per 1000 girls 15-19, 2001-2003	1
Child Abuse & Neglect	24.3 confirmed per 1000 children, FY 1995-1997					22.7 confirmed per 1000 children, FY 2002-04	63
High School Dropouts	2.3% of grades 9-12, SY 2001/02-2003/04					<i>Trend data available in future Factbooks</i>	N/A
Juvenile Violent Crime Arrests	38.6 per 100,000 youths 10-17, 1994-1996	-113.5%				82.4 per 100,000 youths 10-17, 2001-2003	21
Mortality							
Infant Mortality (under age 1)	3.9 per 1000 live births, 1994-1996					3.8 per 1000 live births, 2001-2003	11
Child Death (age 1-14)	45.4 per 100,000 children 1-14, 1994-1996	-24.8%				56.6 per 100,000 children 1-14, 2001-2003	72
Teen Death (ages 15-19)	49.1 per 100,000 teens 15-19, 1994-1996	-98.8%				97.6 per 100,000 teens 15-19, 2001-2003	49
Child and Teen Death (ages 1-19)	46.5 per 100,000 youth 1-19, 1994-1996	-54.0%				71.7 per 100,000 youth 1-19, 2001-2003	65
Economic Cluster	46 Economic Index, 1994-1996	-228.3%				151 Economic Index, 2001-2003	tied for 36

Change of more than 110%—positive or negative—are graphed with broken bar

■ state change

■ county change

= zero base - cannot calculate change

County Rank (1 = best) (77 = worst)

County Health Indicators

Health Resources

The following medical facilities are physically located within Woods County

YES	Hospital serving general population
NO	Hospital specializing in care for specific population, procedure or condition
YES	County or City/County Health Department
NO	Non-health dept. community-based clinic receiving selected federal funding
NO	Community Health Center
NO	Clinic or health center serving native population
YES	Community Mental Health Center

The following medical practitioners are located in Woods County

8	Physicians	(0.9 per 1000 people)
103	Nurses	(11.8 per 1000 people)
4	Dentists	(0.5 per 1000 people)

The following community partnerships serve Woods County

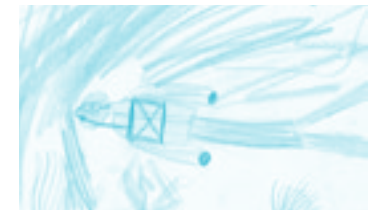
NO	Turning Point
NO	Systems of Care

Health Status

Rate		Rank
72.5%	Birth mothers received adequate prenatal care	15
0.0/10,000	Infants/Toddlers exposed to lead	tied for 1
74.7%	Two-year olds immunized	6
95.9%	Eligible children covered by Medicaid/SCHIP	34
1,112.0/100,000	Juvenile arrests for drug & alcohol related offenses	62
17.9/100,000	Children & teen deaths from disease	54

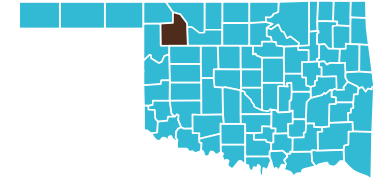
Overall Health Status Rank

Tied for 17



All of Woods County is designated as a medically underserved area.

Woodward County



County Seat: **Woodward**

Number of Children (2003): 4,405
Children are 23.9% of the county population

Number of Poor Children (2002): 719
Child Poverty Rate (2002): 16.3%

Economic Cluster #3: Middle

Indicator	Base Data	-	Worsened	Improved	+	Recent Data	Rank
Birthweight							
Low Birthweight (under 5½ lbs)	6.5% of live births, 1994-1996	-78.9%				11.6% of live births, 2001-2003	74
Very Low Birthweight (under 3lbs,5oz)	0.7% of live births, 1994-1996	-112.4%				1.5% of live births, 2001-2003	62
Births to Teens							
Births to Young Teens (ages 15-17)	33.9 per 1000 girls 15-17, 1994-1996				39.0%	20.7 per 1000 girls 15-17, 2001-2003	19
Births to Older Teens (ages 18-19)	129.1 per 1000 girls 18-19, 1994-1996				5.6%	122.0 per 1000 girls 18-19, 2001-2003	59
Births to Teens (ages 15-19)	64.0 per 1000 girls 15-19, 1994-1996				5.2%	60.7 per 1000 girls 15-19, 2001-2003	41
Child Abuse & Neglect	17.2 confirmed per 1000 children, FY 1995-1997	-22.6%				21.1 confirmed per 1000 children, FY 2002-04	56
High School Dropouts	3.2% of grades 9-12, SY 2001/02-2003/04					<i>Trend data available in future Factbooks</i>	N/A
Juvenile Violent Crime Arrests	331.7 per 100,000 youths 10-17, 1994-1996				15.0%	281.9 per 100,000 youths 10-17, 2001-2003	65
Mortality							
Infant Mortality (under age 1)	11.3 per 1000 live births, 1994-1996				44.7%	6.3 per 1000 live births, 2001-2003	30
Child Death (age 1-14)	8.1 per 100,000 children 1-14, 1994-1996	-389.8%				39.5 per 100,000 children 1-14, 2001-2003	55
Teen Death (ages 15-19)	122.6 per 100,000 teens 15-19, 1994-1996				62.8%	45.6 per 100,000 teens 15-19, 2001-2003	18
Child and Teen Death (ages 1-19)	36.4 per 100,000 youth 1-19, 1994-1996	-13.5%				41.3 per 100,000 youth 1-19, 2001-2003	33
Economic Cluster	104 Economic Index, 1994-1996	-13.5%				118 Economic Index, 2001-2003	tied for 26

Change of more than 110%—positive or negative—are graphed with broken bar

■ state change

■ county change

= zero base - cannot calculate change

County Rank (1 = best) (77 = worst)

County Health Indicators

Health Resources

The following medical facilities are physically located within **Woodward County**

YES	Hospital serving general population
YES	Hospital specializing in care for specific population, procedure or condition
YES	County or City/County Health Department
NO	Non-health dept. community-based clinic receiving selected federal funding
NO	Community Health Center
NO	Clinic or health center serving native population
YES	Community Mental Health Center

The following medical practitioners are located in **Woodward County**

22	Physicians	(1.2 per 1000 people)
224	Nurses	(12.1 per 1000 people)
13	Dentists	(0.7 per 1000 people)

The following community partnerships serve **Woodward County**

NO	Turning Point
YES	Systems of Care

Health Status

Rate		Rank
61.4%	Birth mothers received adequate prenatal care	43
0.0/10,000	Infants/Toddlers exposed to lead	tied for 1
67.1%	Two-year olds immunized	24
92.2%	Eligible children covered by Medicaid/SCHIP	42
1,800.8/100,000	Juvenile arrests for drug & alcohol related offenses	75
20.7/100,000	Children & teen deaths from disease	62

Overall Health Status Rank

51

None of **Woodward County** is designated as a medically underserved area.

