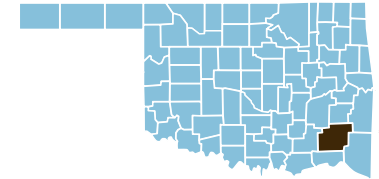


Pushmataha County



County Seat: Antlers

Number of Children (2003): 2,883

Number of Poor Children (2002): 865

Economic Cluster #5: Poorest

Children are 24.5% of the county population

Child Poverty Rate (2002): 30.4%

Indicator	Base Data	-	Worsened	Improved	+	Recent Data	Rank
Birthweight							
Low Birthweight (under 5½ lbs)	2.0% of live births, 1994-1996	-167.8%				5.3% of live births, 2001-2003	4
Very Low Birthweight (under 3lbs,5oz)	0.2% of live births, 1994-1996	-104.0%				0.5% of live births, 2001-2003	9
Births to Teens							
Births to Young Teens (ages 15-17)	41.1 per 1000 girls 15-17, 1994-1996				14.3%	35.3 per 1000 girls 15-17, 2001-2003	61
Births to Older Teens (ages 18-19)	120.2 per 1000 girls 18-19, 1994-1996				26.4%	88.5 per 1000 girls 18-19, 2001-2003	26
Births to Teens (ages 15-19)	65.2 per 1000 girls 15-19, 1994-1996				16.3%	54.6 per 1000 girls 15-19, 2001-2003	33
Child Abuse & Neglect	27.7 confirmed per 1000 children, FY 1995-1997				8.3%	25.4 confirmed per 1000 children, FY 2002-04	71
High School Dropouts	4.7% of grades 9-12, SY 2001/02-2003/04					<i>Trend data available in future Factbooks</i>	N/A
Juvenile Violent Crime Arrests	250.1 per 100,000 youths 10-17, 1994-1996	-55.1%				388.0 per 100,000 youths 10-17, 2001-2003	70
Mortality							
Infant Mortality (under age 1)	9.9 per 1000 live births, 1994-1996	-2.0%				10.1 per 1000 live births, 2001-2003	59
Child Death (age 1-14)	14.9 per 100,000 children 1-14, 1994-1996	-303.5%				60.0 per 100,000 children 1-14, 2001-2003	74
Teen Death (ages 15-19)	122.3 per 100,000 teens 15-19, 1994-1996				38.4%	75.3 per 100,000 teens 15-19, 2001-2003	35
Child and Teen Death (ages 1-19)	43.6 per 100,000 youth 1-19, 1994-1996	-47.7%				64.4 per 100,000 youth 1-19, 2001-2003	61
Economic Cluster	280 Economic Index, 1994-1996				10.0%	252 Economic Index, 2001-2003	68

Change of more than 110%—positive or negative—are graphed with broken bar

■ state change

■ county change

= zero base - cannot calculate change

County Rank (1 = best) (77 = worst)

County Health Indicators

Health Resources

The following medical facilities are physically located within Pushmataha County

YES	Hospital serving general population
NO	Hospital specializing in care for specific population, procedure or condition
YES	County or City/County Health Department
NO	Non-health dept. community-based clinic receiving selected federal funding
NO	Community Health Center
NO	Clinic or health center serving native population
NO	Community Mental Health Center

The following medical practitioners are located in Pushmataha County

8	Physicians	(0.7 per 1000 people)
220	Nurses	(18.8 per 1000 people)
4	Dentists	(0.3 per 1000 people)

The following community partnerships serve Pushmataha County

YES	Turning Point
YES	Systems of Care

Health Status

Rate	Rank
49.6%	70
0.0/10,000	tied for 1
58.8%*	59
82.1%	58
433.6/100,000	15
21.5/100,000	65

*2003 data displayed. May be low due to vaccine shortage.

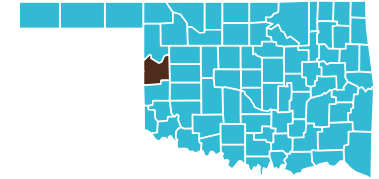
Overall Health Status Rank

65

All of Pushmataha County is designated as a medically underserved area.



Roger Mills County



County Seat: **Cheyenne**

Number of Children (2003): 667
Children are 20.8% of the county population

Number of Poor Children (2002): 121
Child Poverty Rate (2002): 17.9%

Economic Cluster #1: Wealthiest

Indicator	Base Data	-	Worsened	Improved	+	Recent Data	Rank
Birthweight							
Low Birthweight (under 5½ lbs)	9.5% of live births, 1994-1996	-14.0%				10.9% of live births, 2001-2003	72
Very Low Birthweight (under 3lbs,5oz)	1.9% of live births, 1994-1996				100.0%	0.0% of live births, 2001-2003	tied for 1
Births to Teens							
Births to Young Teens (ages 15-17)	17.6 per 1000 girls 15-17, 1994-1996				36.5%	11.2 per 1000 girls 15-17, 2001-2003	6
Births to Older Teens (ages 18-19)	86.5 per 1000 girls 18-19, 1994-1996	-24.9%				108.1 per 1000 girls 18-19, 2001-2003	38
Births to Teens (ages 15-19)	36.1 per 1000 girls 15-19, 1994-1996	-52.6%				55.0 per 1000 girls 15-19, 2001-2003	34
Child Abuse & Neglect	12.5 confirmed per 1000 children, FY 1995-1997				36.9%	7.9 confirmed per 1000 children, FY 2002-04	4
High School Dropouts	1.9% of grades 9-12, SY 2001/02-2003/04					<i>Trend data available in future Factbooks</i>	N/A
Juvenile Violent Crime Arrests	65.6 per 100,000 youths 10-17, 1994-1996				100.0%	0.0 per 100,000 youths 10-17, 2001-2003	tied for 1
Mortality							
Infant Mortality (under age 1)	19.0 per 1000 live births, 1994-1996				59.3%	7.8 per 1000 live births, 2001-2003	46
Child Death (age 1-14)	81.8 per 100,000 children 1-14, 1994-1996	-55.0%				126.7 per 100,000 children 1-14, 2001-2003	77
Teen Death (ages 15-19)	121.2 per 100,000 teens 15-19, 1994-1996				100.0%	0.0 per 100,000 teens 15-19, 2001-2003	tied for 1
Child and Teen Death (ages 1-19)	91.7 per 100,000 youth 1-19, 1994-1996				5.0%	87.1 per 100,000 youth 1-19, 2001-2003	74
Economic Cluster	117 Economic Index, 1994-1996				65.0%	41 Economic Index, 2001-2003	5

Change of more than 110%—positive or negative—are graphed with broken bar

■ state change

■ county change

= zero base - cannot calculate change

County Rank (1 = best) (77 = worst)

County Health Indicators

Health Resources

The following medical facilities are physically located within **Roger Mills County**

YES	Hospital serving general population
NO	Hospital specializing in care for specific population, procedure or condition
NO	County or City/County Health Department
NO	Non-health dept. community-based clinic receiving selected federal funding
NO	Community Health Center
NO	Clinic or health center serving native population
NO	Community Mental Health Center

The following medical practitioners are located in **Roger Mills County**

3	Physicians	(0.9 per 1000 people)
50	Nurses	(15.6 per 1000 people)
1	Dentists	(0.3 per 1000 people)

The following community partnerships serve **Roger Mills County**

NO	Turning Point
YES	Systems of Care

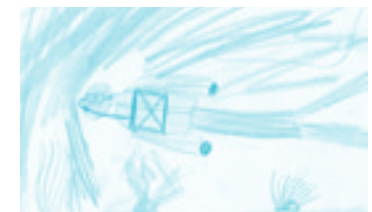
Health Status

Rate		Rank
48.4%	Birth mothers received adequate prenatal care	72
0.0/10,000	Infants/Toddlers exposed to lead	tied for 1
86.7%	Two-year olds immunized	1
40.8%	Eligible children covered by Medicaid/SCHIP	77
0.0/100,000	Juvenile arrests for drug & alcohol related offenses	tied for 1
0.0/100,000	Children & teen deaths from disease	tied for 1

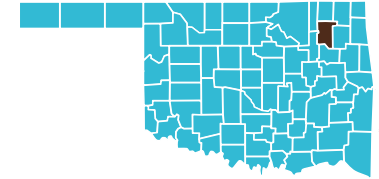
Overall Health Status Rank

8

All of **Roger Mills County** is designated as a medically underserved area.



Rogers County



County Seat: Claremore

Number of Children (2003): 20,365
Children are 26.4% of the county population

Number of Poor Children (2002): 2,455
Child Poverty Rate (2002): 12.0%

Economic Cluster #1: Wealthiest

Indicator	Base Data	-	Worsened	Improved	+	Recent Data	Rank
Birthweight							
Low Birthweight (under 5½ lbs)	6.6% of live births, 1994-1996	-2.0%				6.8% of live births, 2001-2003	21
Very Low Birthweight (under 3lbs,5oz)	1.2% of live births, 1994-1996				9.0%	1.1% of live births, 2001-2003	30
Births to Teens							
Births to Young Teens (ages 15-17)	30.2 per 1000 girls 15-17, 1994-1996				55.4%	13.4 per 1000 girls 15-17, 2001-2003	8
Births to Older Teens (ages 18-19)	96.3 per 1000 girls 18-19, 1994-1996				23.3%	73.9 per 1000 girls 18-19, 2001-2003	15
Births to Teens (ages 15-19)	53.1 per 1000 girls 15-19, 1994-1996				32.1%	36.0 per 1000 girls 15-19, 2001-2003	12
Child Abuse & Neglect	7.1 confirmed per 1000 children, FY 1995-1997	-49.9%				10.6 confirmed per 1000 children, FY 2002-04	13
High School Dropouts	3.0% of grades 9-12, SY 2001/02-2003/04					<i>Trend data available in future Factbooks</i>	N/A
Juvenile Violent Crime Arrests	121.9 per 100,000 youths 10-17, 1994-1996				39.9%	73.2 per 100,000 youths 10-17, 2001-2003	17
Mortality							
Infant Mortality (under age 1)	4.9 per 1000 live births, 1994-1996				4.7%	4.6 per 1000 live births, 2001-2003	15
Child Death (age 1-14)	22.6 per 100,000 children 1-14, 1994-1996	-12.6%				25.4 per 100,000 children 1-14, 2001-2003	30
Teen Death (ages 15-19)	83.6 per 100,000 teens 15-19, 1994-1996				6.5%	78.1 per 100,000 teens 15-19, 2001-2003	41
Child and Teen Death (ages 1-19)	38.7 per 100,000 youth 1-19, 1994-1996	-3.1%				39.9 per 100,000 youth 1-19, 2001-2003	29
Economic Cluster	61 Economic Index, 1994-1996	-4.9%				64 Economic Index, 2001-2003	12

Change of more than 110%—positive or negative—are graphed with broken bar

■ state change

■ county change

= zero base - cannot calculate change

County Rank (1 = best) (77 = worst)

County Health Indicators

Health Resources

The following medical facilities are physically located within Rogers County

YES	Hospital serving general population
YES	Hospital specializing in care for specific population, procedure or condition
YES	County or City/County Health Department
NO	Non-health dept. community-based clinic receiving selected federal funding
NO	Community Health Center
YES	Clinic or health center serving native population
YES	Community Mental Health Center

The following medical practitioners are located in Rogers County

87	Physicians	(1.2 per 1000 people)
877	Nurses	(11.6 per 1000 people)
23	Dentists	(0.3 per 1000 people)

The following community partnerships serve Rogers County

YES	Turning Point
NO	Systems of Care

Health Status

Rate		Rank
67.7%	Birth mothers received adequate prenatal care	26
3.8/10,000	Infants/Toddlers exposed to lead	47
68.6%	Two-year olds immunized	17
92.6%	Eligible children covered by Medicaid/SCHIP	40
352.8/100,000	Juvenile arrests for drug & alcohol related offenses	11
9.2/100,000	Children & teen deaths from disease	23

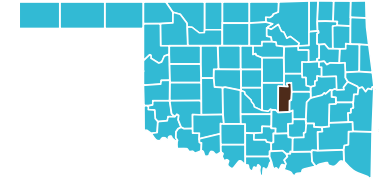
Overall Health Status Rank

Tied for 11

Part of Rogers County is designated as a medically underserved area.



Seminole County



County Seat: **Wewoka**

Number of Children (2003): 6,297
Children are 25.7% of the county population

Number of Poor Children (2002): 1,967
Child Poverty Rate (2002): 31.2%

Economic Cluster #5: Poorest

Indicator	Base Data	-	Worsened	Improved	+	Recent Data	Rank
Birthweight							
Low Birthweight (under 5½ lbs)	7.6% of live births, 1994-1996				10.5%	6.8% of live births, 2001-2003	24
Very Low Birthweight (under 3lbs,5oz)	1.0% of live births, 1994-1996	-43.2%				1.4% of live births, 2001-2003	55
Births to Teens							
Births to Young Teens (ages 15-17)	56.1 per 1000 girls 15-17, 1994-1996				27.1%	40.9 per 1000 girls 15-17, 2001-2003	72
Births to Older Teens (ages 18-19)	157.1 per 1000 girls 18-19, 1994-1996				2.8%	152.7 per 1000 girls 18-19, 2001-2003	74
Births to Teens (ages 15-19)	92.2 per 1000 girls 15-19, 1994-1996				8.8%	84.1 per 1000 girls 15-19, 2001-2003	73
Child Abuse & Neglect	17.2 confirmed per 1000 children, FY 1995-1997	-27.1%				21.9 confirmed per 1000 children, FY 2002-04	62
High School Dropouts	3.2% of grades 9-12, SY 2001/02-2003/04					<i>Trend data available in future Factbooks</i>	N/A
Juvenile Violent Crime Arrests	338.6 per 100,000 youths 10-17, 1994-1996				54.0%	155.8 per 100,000 youths 10-17, 2001-2003	50
Mortality							
Infant Mortality (under age 1)	5.8 per 1000 live births, 1994-1996	-64.1%				9.6 per 1000 live births, 2001-2003	56
Child Death (age 1-14)	45.4 per 100,000 children 1-14, 1994-1996				39.1%	27.7 per 100,000 children 1-14, 2001-2003	35
Teen Death (ages 15-19)	52.7 per 100,000 teens 15-19, 1994-1996	-99.8%				105.3 per 100,000 teens 15-19, 2001-2003	54
Child and Teen Death (ages 1-19)	47.4 per 100,000 youth 1-19, 1994-1996	-4.7%				49.6 per 100,000 youth 1-19, 2001-2003	51
Economic Cluster	276 Economic Index, 1994-1996	-5.1%				290 Economic Index, 2001-2003	76

Change of more than 110%—positive or negative—are graphed with broken bar

■ state change

■ county change

= zero base - cannot calculate change

County Rank (1 = best) (77 = worst)

County Health Indicators

Health Resources

The following medical facilities are physically located within **Seminole County**

YES	Hospital serving general population
NO	Hospital specializing in care for specific population, procedure or condition
YES	County or City/County Health Department
NO	Non-health dept. community-based clinic receiving selected federal funding
YES	Community Health Center
YES	Clinic or health center serving native population
YES	Community Mental Health Center

The following medical practitioners are located in **Seminole County**

20	Physicians	(0.8 per 1000 people)
312	Nurses	(12.6 per 1000 people)
8	Dentists	(0.3 per 1000 people)

The following community partnerships serve **Seminole County**

YES	Turning Point
NO	Systems of Care

Health Status

Rate

64.9%	Birth mothers received adequate prenatal care
5.3/10,000	Infants/Toddlers exposed to lead
60.4%*	Two-year olds immunized
100.0%	Eligible children covered by Medicaid/SCHIP
968.5/100,000	Juvenile arrests for drug & alcohol related offenses
5.0/100,000	Children & teen deaths from disease

*2003 data displayed. May be low due to vaccine shortage.

Rank

31
49
54
tied for 1
52
14

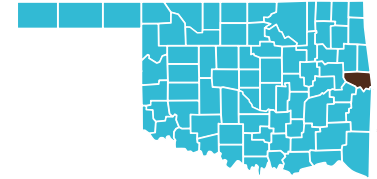
Overall Health Status Rank

Tied for 23

All of **Seminole County** is designated as a medically underserved area.



Sequoyah County



County Seat: Sallisaw

Number of Children (2003): 10,532
Children are 26.3% of the county population

Number of Poor Children (2002): 2,802
Child Poverty Rate (2002): 26.6%

Economic Cluster #5: Poorest

Indicator	Base Data	-	Worsened	Improved	+	Recent Data	Rank
Birthweight Low Birthweight (under 5½ lbs) Very Low Birthweight (under 3lbs,5oz)	6.2% of live births, 1994-1996	-28.9%				8.0% of live births, 2001-2003	49
	1.4% of live births, 1994-1996				4.6%	1.3% of live births, 2001-2003	49
Births to Teens Births to Young Teens (ages 15-17) Births to Older Teens (ages 18-19)	42.6 per 1000 girls 15-17, 1994-1996				29.4%	30.1 per 1000 girls 15-17, 2001-2003	41
	129.3 per 1000 girls 18-19, 1994-1996	-8.9%				140.8 per 1000 girls 18-19, 2001-2003	70
Births to Teens (ages 15-19)	72.7 per 1000 girls 15-19, 1994-1996				2.9%	70.6 per 1000 girls 15-19, 2001-2003	66
	18.6 confirmed per 1000 children, FY 1995-1997				36.1%	11.9 confirmed per 1000 children, FY 2002-04	21
Child Abuse & Neglect	3.5% of grades 9-12, SY 2001/02-2003/04					<i>Trend data available in future Factbooks</i>	N/A
High School Dropouts	119.8 per 100,000 youths 10-17, 1994-1996	-227.6%				392.6 per 100,000 youths 10-17, 2001-2003	72
Juvenile Violent Crime Arrests	6.4 per 1000 live births, 1994-1996				4.6%	6.1 per 1000 live births, 2001-2003	27
	30.2 per 100,000 children 1-14, 1994-1996	-21.5%				36.6 per 100,000 children 1-14, 2001-2003	47
Mortality Infant Mortality (under age 1) Child Death (age 1-14)	103.8 per 100,000 teens 15-19, 1994-1996	-20.6%				125.2 per 100,000 teens 15-19, 2001-2003	64
	50.2 per 100,000 youth 1-19, 1994-1996	-19.5%				60.0 per 100,000 youth 1-19, 2001-2003	58
Economic Cluster	237 Economic Index, 1994-1996				8.4%	217 Economic Index, 2001-2003	59

Change of more than 110%—positive or negative—are graphed with broken bar ■ state change ■ county change ### = zero base - cannot calculate change County Rank (1 = best) (77 = worst)

County Health Indicators

Health Resources

The following medical facilities are physically located within Sequoyah County

YES	Hospital serving general population
NO	Hospital specializing in care for specific population, procedure or condition
YES	County or City/County Health Department
NO	Non-health dept. community-based clinic receiving selected federal funding
NO	Community Health Center
YES	Clinic or health center serving native population
YES	Community Mental Health Center

The following medical practitioners are located in Sequoyah County

22	Physicians	(0.6 per 1000 people)
375	Nurses	(9.4 per 1000 people)
14	Dentists	(0.4 per 1000 people)

The following community partnerships serve Sequoyah County

NO	Turning Point
NO	Systems of Care

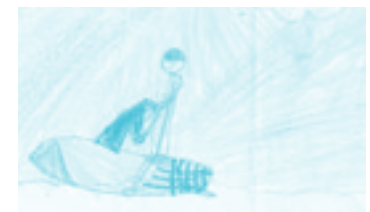
Health Status

Rate		Rank
61.9%	Birth mothers received adequate prenatal care	41
3.3/10,000	Infants/Toddlers exposed to lead	44
74.1%	Two-year olds immunized	tied for 7
100.0%	Eligible children covered by Medicaid/SCHIP	tied for 1
995.1/100,000	Juvenile arrests for drug & alcohol related offenses	54
24.0/100,000	Children & teen deaths from disease	68

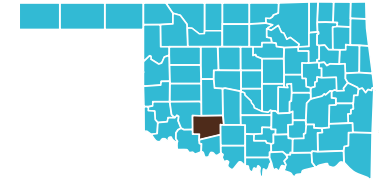
Overall Health Status Rank

34

All of Sequoyah County is designated as a medically underserved area.



Stephens County



County Seat: **Duncan**

Number of Children (2003): 9,947
Children are 23.4% of the county population

Number of Poor Children (2002): 2,061
Child Poverty Rate (2002): 20.7%

Economic Cluster #3: Middle

Indicator	Base Data	-	Worsened	Improved	+	Recent Data	Rank
Birthweight							
Low Birthweight (under 5½ lbs)	7.5% of live births, 1994-1996				2.2%	7.3% of live births, 2001-2003	30
Very Low Birthweight (under 3lbs,5oz)	0.8% of live births, 1994-1996	-69.9%				1.4% of live births, 2001-2003	57
Births to Teens							
Births to Young Teens (ages 15-17)	43.1 per 1000 girls 15-17, 1994-1996				53.6%	20.0 per 1000 girls 15-17, 2001-2003	16
Births to Older Teens (ages 18-19)	120.4 per 1000 girls 18-19, 1994-1996				9.7%	108.7 per 1000 girls 18-19, 2001-2003	39
Births to Teens (ages 15-19)	67.8 per 1000 girls 15-19, 1994-1996				20.7%	53.8 per 1000 girls 15-19, 2001-2003	32
Child Abuse & Neglect	9.9 confirmed per 1000 children, FY 1995-1997	-18.4%				11.7 confirmed per 1000 children, FY 2002-04	19
High School Dropouts	4.2% of grades 9-12, SY 2001/02-2003/04					<i>Trend data available in future Factbooks</i>	N/A
Juvenile Violent Crime Arrests	106.8 per 100,000 youths 10-17, 1994-1996				16.4%	89.3 per 100,000 youths 10-17, 2001-2003	26
Mortality							
Infant Mortality (under age 1)	8.3 per 1000 live births, 1994-1996				30.5%	5.7 per 1000 live births, 2001-2003	23
Child Death (age 1-14)	34.6 per 100,000 children 1-14, 1994-1996	-62.1%				56.1 per 100,000 children 1-14, 2001-2003	70
Teen Death (ages 15-19)	156.6 per 100,000 teens 15-19, 1994-1996				57.8%	66.2 per 100,000 teens 15-19, 2001-2003	29
Child and Teen Death (ages 1-19)	65.9 per 100,000 youth 1-19, 1994-1996				10.5%	59.0 per 100,000 youth 1-19, 2001-2003	56
Economic Cluster	142 Economic Index, 1994-1996				12.7%	124 Economic Index, 2001-2003	29

Change of more than 110%—positive or negative—are graphed with broken bar

■ state change

■ county change

= zero base - cannot calculate change

County Rank (1 = best) (77 = worst)

County Health Indicators

Health Resources

The following medical facilities are physically located within **Stephens County**

YES	Hospital serving general population
NO	Hospital specializing in care for specific population, procedure or condition
YES	County or City/County Health Department
NO	Non-health dept. community-based clinic receiving selected federal funding
NO	Community Health Center
NO	Clinic or health center serving native population
YES	Community Mental Health Center

The following medical practitioners are located in **Stephens County**

34	Physicians	(0.8 per 1000 people)
476	Nurses	(11.2 per 1000 people)
21	Dentists	(0.5 per 1000 people)

The following community partnerships serve **Stephens County**

YES	Turning Point
NO	Systems of Care

Health Status

Rate		Rank
54.6%	Birth mothers received adequate prenatal care	59
7.0/10,000	Infants/Toddlers exposed to lead	55
56.8%*	Two-year olds immunized	62
89.9%	Eligible children covered by Medicaid/SCHIP	50
961.9/100,000	Juvenile arrests for drug & alcohol related offenses	51
37.2/100,000	Children & teen deaths from disease	74

*2003 data displayed. May be low due to vaccine shortage.

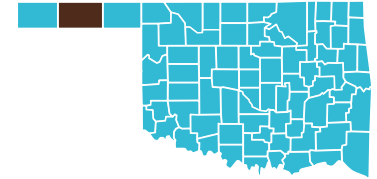
Overall Health Status Rank

77

Part of **Stephens County** is designated as a medically underserved area.



Texas County



County Seat: **Guymon**

Number of Children (2003): 5,521
Children are 27.7% of the county population

Number of Poor Children (2002): 799
Child Poverty Rate (2002): 14.4%

Economic Cluster #1: Wealthiest

Indicator	Base Data	-	Worsened	Improved	+	Recent Data	Rank
Birthweight							
Low Birthweight (under 5½ lbs)	5.1% of live births, 1994-1996	-51.4%				7.8% of live births, 2001-2003	45
Very Low Birthweight (under 3lbs,5oz)	1.4% of live births, 1994-1996				27.3%	1.0% of live births, 2001-2003	27
Births to Teens							
Births to Young Teens (ages 15-17)	27.6 per 1000 girls 15-17, 1994-1996	-98.9%				55.0 per 1000 girls 15-17, 2001-2003	75
Births to Older Teens (ages 18-19)	99.0 per 1000 girls 18-19, 1994-1996	-23.9%				122.7 per 1000 girls 18-19, 2001-2003	61
Births to Teens (ages 15-19)	55.4 per 1000 girls 15-19, 1994-1996	-53.9%				85.3 per 1000 girls 15-19, 2001-2003	75
Child Abuse & Neglect	11.0 confirmed per 1000 children, FY 1995-1997				9.3%	10.0 confirmed per 1000 children, FY 2002-04	10
High School Dropouts	4.1% of grades 9-12, SY 2001/02-2003/04					<i>Trend data available in future Factbooks</i>	N/A
Juvenile Violent Crime Arrests	252.0 per 100,000 youths 10-17, 1994-1996				43.9%	141.5 per 100,000 youths 10-17, 2001-2003	46
Mortality							
Infant Mortality (under age 1)	4.3 per 1000 live births, 1994-1996	-0.9%				4.3 per 1000 live births, 2001-2003	12
Child Death (age 1-14)	54.1 per 100,000 children 1-14, 1994-1996				42.9%	30.9 per 100,000 children 1-14, 2001-2003	40
Teen Death (ages 15-19)	46.1 per 100,000 teens 15-19, 1994-1996	-79.5%				82.8 per 100,000 teens 15-19, 2001-2003	42
Child and Teen Death (ages 1-19)	51.9 per 100,000 youth 1-19, 1994-1996				13.2%	45.0 per 100,000 youth 1-19, 2001-2003	38
Economic Cluster	26 Economic Index, 1994-1996				3.8%	25 Economic Index, 2001-2003	1

Change of more than 110%—positive or negative—are graphed with broken bar

■ state change

■ county change

= zero base - cannot calculate change

County Rank (1 = best) (77 = worst)

County Health Indicators

Health Resources

The following medical facilities are physically located within **Texas County**

YES	Hospital serving general population
NO	Hospital specializing in care for specific population, procedure or condition
YES	County or City/County Health Department
NO	Non-health dept. community-based clinic receiving selected federal funding
NO	Community Health Center
NO	Clinic or health center serving native population
YES	Community Mental Health Center

The following medical practitioners are located in **Texas County**

19	Physicians	(0.9 per 1000 people)
156	Nurses	(7.7 per 1000 people)
8	Dentists	(0.4 per 1000 people)

The following community partnerships serve **Texas County**

YES	Turning Point
NO	Systems of Care

Health Status

Rate		Rank
31.0%	Birth mothers received adequate prenatal care	77
0.0/10,000	Infants/Toddlers exposed to lead	tied for 1
70.5%*	Two-year olds immunized	14
67.5%	Eligible children covered by Medicaid/SCHIP	68
1,061.0/100,000	Juvenile arrests for drug & alcohol related offenses	59
11.3/100,000	Children & teen deaths from disease	29

*2003 data displayed. May be low due to vaccine shortage.

Overall Health Status Rank

52

None of **Texas County** is designated as a medically underserved area.

