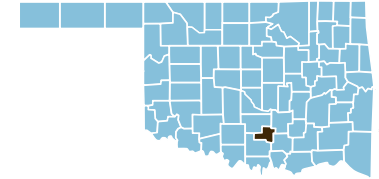


# Murray County



County Seat: Sulphur

Number of Children (2003): 2,901  
Children are 22.8% of the county population

Number of Poor Children (2002): 603  
Child Poverty Rate (2002): 20.7%

Economic Cluster #5: Poorest

Indicator	Base Data	-	Worsened	Improved	+	Recent Data	Rank
<b>Birthweight</b>							
Low Birthweight (under 5½ lbs)	7.9% of live births, 1994-1996	-39.5%				11.0% of live births, 2001-2003	73
Very Low Birthweight (under 3lbs,5oz)	1.7% of live births, 1994-1996				24.1%	1.3% of live births, 2001-2003	44
<b>Births to Teens</b>							
Births to Young Teens (ages 15-17)	35.8 per 1000 girls 15-17, 1994-1996				6.3%	33.6 per 1000 girls 15-17, 2001-2003	57
Births to Older Teens (ages 18-19)	145.8 per 1000 girls 18-19, 1994-1996				22.6%	112.9 per 1000 girls 18-19, 2001-2003	45
Births to Teens (ages 15-19)	72.4 per 1000 girls 15-19, 1994-1996				7.2%	67.2 per 1000 girls 15-19, 2001-2003	59
<b>Child Abuse &amp; Neglect</b>	16.5 confirmed per 1000 children, FY 1995-1997	-16.4%				19.2 confirmed per 1000 children, FY 2002-04	49
<b>High School Dropouts</b>	1.9% of grades 9-12, SY 2001/02-2003/04					<i>Trend data available in future Factbooks</i>	N/A
<b>Juvenile Violent Crime Arrests</b>	206.6 per 100,000 youths 10-17, 1994-1996	-32.7%				274.1 per 100,000 youths 10-17, 2001-2003	64
<b>Mortality</b>							
Infant Mortality (under age 1)	9.6 per 1000 live births, 1994-1996	-10.7%				10.6 per 1000 live births, 2001-2003	62
Child Death (age 1-14)	41.7 per 100,000 children 1-14, 1994-1996	-7.5%				44.8 per 100,000 children 1-14, 2001-2003	60
Teen Death (ages 15-19)	114.4 per 100,000 teens 15-19, 1994-1996				34.0%	75.4 per 100,000 teens 15-19, 2001-2003	36
Child and Teen Death (ages 1-19)	61.1 per 100,000 youth 1-19, 1994-1996				12.4%	53.5 per 100,000 youth 1-19, 2001-2003	52
<b>Economic Cluster</b>	202 Economic Index, 1994-1996				4.0%	194 Economic Index, 2001-2003	52

Change of more than 110%—positive or negative—are graphed with broken bar

■ state change

■ county change

### = zero base - cannot calculate change

County Rank (1 = best) (77 = worst)

## County Health Indicators

### Health Resources

The following medical facilities are physically located within Murray County

YES	Hospital serving general population
NO	Hospital specializing in care for specific population, procedure or condition
YES	County or City/County Health Department
NO	Non-health dept. community-based clinic receiving selected federal funding
NO	Community Health Center
NO	Clinic or health center serving native population
YES	Community Mental Health Center

The following medical practitioners are located in Murray County

12	Physicians	( 1.0 per 1000 people)
209	Nurses	( 16.5 per 1000 people)
3	Dentists	( 0.2 per 1000 people)

The following community partnerships serve Murray County

NO	Turning Point
NO	Systems of Care

### Health Status

Rate		Rank
77.3%	Birth mothers received adequate prenatal care	5
11.4/10,000	Infants/Toddlers exposed to lead	61
86.5%	Two-year olds immunized	2
100.0%	Eligible children covered by Medicaid/SCHIP	tied for 1
747.6/100,000	Juvenile arrests for drug & alcohol related offenses	35
21.4/100,000	Children & teen deaths from disease	64

\*2003 data displayed. May be low due to vaccine shortage.

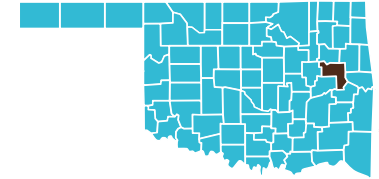
### Overall Health Status Rank

14

None of Murray County is designated as a medically underserved area.



# Muskogee County



County Seat: Muskogee

Number of Children (2003): 17,659

Number of Poor Children (2002): 4,420

Economic Cluster #5: Poorest

Children are 25.1% of the county population

Child Poverty Rate (2002): 25.2%

Indicator	Base Data	-	Worsened	Improved	+	Recent Data	Rank
<b>Birthweight</b>							
Low Birthweight (under 5½ lbs)	7.6% of live births, 1994-1996	-2.2%				7.7% of live births, 2001-2003	44
Very Low Birthweight (under 3lbs,5oz)	1.3% of live births, 1994-1996				11.0%	1.2% of live births, 2001-2003	38
<b>Births to Teens</b>							
Births to Young Teens (ages 15-17)	51.6 per 1000 girls 15-17, 1994-1996				44.5%	28.6 per 1000 girls 15-17, 2001-2003	37
Births to Older Teens (ages 18-19)	147.2 per 1000 girls 18-19, 1994-1996				20.9%	116.4 per 1000 girls 18-19, 2001-2003	54
Births to Teens (ages 15-19)	86.5 per 1000 girls 15-19, 1994-1996				25.6%	64.4 per 1000 girls 15-19, 2001-2003	52
<b>Child Abuse &amp; Neglect</b>	22.2 confirmed per 1000 children, FY 1995-1997				1.9%	21.8 confirmed per 1000 children, FY 2002-04	60
<b>High School Dropouts</b>	2.8% of grades 9-12, SY 2001/02-2003/04					<i>Trend data available in future Factbooks</i>	N/A
<b>Juvenile Violent Crime Arrests</b>	572.1 per 100,000 youths 10-17, 1994-1996				60.6%	225.6 per 100,000 youths 10-17, 2001-2003	57
<b>Mortality</b>							
Infant Mortality (under age 1)	6.7 per 1000 live births, 1994-1996				8.4%	6.1 per 1000 live births, 2001-2003	28
Child Death (age 1-14)	26.9 per 100,000 children 1-14, 1994-1996	-9.2%				29.4 per 100,000 children 1-14, 2001-2003	39
Teen Death (ages 15-19)	118.9 per 100,000 teens 15-19, 1994-1996				23.8%	90.6 per 100,000 teens 15-19, 2001-2003	46
Child and Teen Death (ages 1-19)	51.1 per 100,000 youth 1-19, 1994-1996				9.7%	46.1 per 100,000 youth 1-19, 2001-2003	43
<b>Economic Cluster</b>	223 Economic Index, 1994-1996				10.8%	199 Economic Index, 2001-2003	tied for 54

Change of more than 110%—positive or negative—are graphed with broken bar

■ state change

■ county change

### = zero base - cannot calculate change

County Rank (1 = best) (77 = worst)

## County Health Indicators

### Health Resources

The following medical facilities are physically located within Muskogee County

YES	Hospital serving general population
YES	Hospital specializing in care for specific population, procedure or condition
YES	County or City/County Health Department
NO	Non-health dept. community-based clinic receiving selected federal funding
NO	Community Health Center
YES	Clinic or health center serving native population
YES	Community Mental Health Center

The following medical practitioners are located in Muskogee County

146	Physicians	( 2.1 per 1000 people)
1,135	Nurses	( 16.2 per 1000 people)
26	Dentists	( 0.4 per 1000 people)

The following community partnerships serve Muskogee County

YES	Turning Point
NO	Systems of Care

### Health Status

Rate		Rank
59.6%	Birth mothers received adequate prenatal care	47
16.9/10,000	Infants/Toddlers exposed to lead	67
50.1%*	Two-year olds immunized	71
99.0%	Eligible children covered by Medicaid/SCHIP	22
994.4/100,000	Juvenile arrests for drug & alcohol related offenses	53
14.2/100,000	Children & teen deaths from disease	42

\*2003 data displayed. May be low due to vaccine shortage.

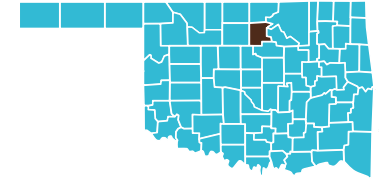
### Overall Health Status Rank

**Tied for 73**

Part of Muskogee County is designated as a medically underserved area.



# Noble County



County Seat: Perry

Number of Children (2003): 2,747  
Children are 24.4% of the county population

Number of Poor Children (2002): 480  
Child Poverty Rate (2002): 17.4%

Economic Cluster #2: Wealthier

Indicator	Base Data	-	Worsened	Improved	+	Recent Data	Rank
<b>Birthweight</b> Low Birthweight (under 5½ lbs) Very Low Birthweight (under 3lbs,5oz)	7.2% of live births, 1994-1996				24.9%	5.4% of live births, 2001-2003	6
	0.2% of live births, 1994-1996	-350.3%				1.1% of live births, 2001-2003	32
<b>Births to Teens</b> Births to Young Teens (ages 15-17) Births to Older Teens (ages 18-19) Births to Teens (ages 15-19)	36.9 per 1000 girls 15-17, 1994-1996				47.5%	19.4 per 1000 girls 15-17, 2001-2003	15
	121.6 per 1000 girls 18-19, 1994-1996				22.4%	94.3 per 1000 girls 18-19, 2001-2003	29
	67.0 per 1000 girls 15-19, 1994-1996				31.5%	45.9 per 1000 girls 15-19, 2001-2003	20
<b>Child Abuse &amp; Neglect</b> <b>High School Dropouts</b> <b>Juvenile Violent Crime Arrests</b> <b>Mortality</b>	11.9 confirmed per 1000 children, FY 1995-1997	-31.0%				15.6 confirmed per 1000 children, FY 2002-04	36
	1.6% of grades 9-12, SY 2001/02-2003/04					<i>Trend data available in future Factbooks</i>	N/A
247.1 per 100,000 youths 10-17, 1994-1996					79.7%	50.1 per 100,000 youths 10-17, 2001-2003	13
	2.4 per 1000 live births, 1994-1996				9.9%	2.2 per 1000 live births, 2001-2003	7
	41.2 per 100,000 children 1-14, 1994-1996				100.0%	0.0 per 100,000 children 1-14, 2001-2003	tied for 1
Teen Death (ages 15-19)	0.0 per 100,000 teens 15-19, 1994-1996				###	0.0 per 100,000 teens 15-19, 2001-2003	tied for 1
Child and Teen Death (ages 1-19)	31.5 per 100,000 youth 1-19, 1994-1996				100.0%	0.0 per 100,000 youth 1-19, 2001-2003	tied for 1
<b>Economic Cluster</b>	83 Economic Index, 1994-1996	-8.4%				90 Economic Index, 2001-2003	20

Change of more than 110%—positive or negative—are graphed with broken bar

■ state change

■ county change

### = zero base - cannot calculate change

County Rank (1 = best) (77 = worst)

## County Health Indicators

### Health Resources

The following medical facilities are physically located within Noble County

YES	Hospital serving general population
NO	Hospital specializing in care for specific population, procedure or condition
YES	County or City/County Health Department
NO	Non-health dept. community-based clinic receiving selected federal funding
NO	Community Health Center
NO	Clinic or health center serving native population
NO	Community Mental Health Center

The following medical practitioners are located in Noble County

8	Physicians	( 0.7 per 1000 people)
139	Nurses	( 12.3 per 1000 people)
2	Dentists	( 0.2 per 1000 people)

The following community partnerships serve Noble County

NO	Turning Point
NO	Systems of Care

### Health Status

Rate		Rank
62.4%	Birth mothers received adequate prenatal care	38
0.0/10,000	Infants/Toddlers exposed to lead	tied for 1
n/a	Two-year olds immunized	n/a
97.0%	Eligible children covered by Medicaid/SCHIP	31
877.2/100,000	Juvenile arrests for drug & alcohol related offenses	42
0.0/100,000	Children & teen deaths from disease	tied for 1

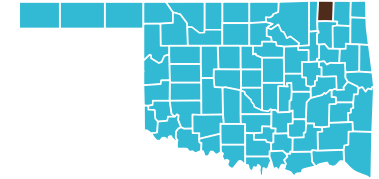
### Overall Health Status Rank

6

None of Noble County is designated as a medically underserved area.



# Nowata County



County Seat: **Nowata**

Number of Children (2003): 2,683  
Children are 24.8% of the county population

Number of Poor Children (2002): 544  
Child Poverty Rate (2002): 20.4%

Economic Cluster #5: Poorest

Indicator	Base Data	-	Worsened	Improved	+	Recent Data	Rank
<b>Birthweight</b>							
Low Birthweight (under 5½ lbs)	8.4% of live births, 1994-1996					5.3% of live births, 2001-2003	5
Very Low Birthweight (under 3lbs,5oz)	1.6% of live births, 1994-1996					0.0% of live births, 2001-2003	tied for 1
<b>Births to Teens</b>							
Births to Young Teens (ages 15-17)	37.6 per 1000 girls 15-17, 1994-1996					18.9 per 1000 girls 15-17, 2001-2003	14
Births to Older Teens (ages 18-19)	153.0 per 1000 girls 18-19, 1994-1996					110.8 per 1000 girls 18-19, 2001-2003	42
Births to Teens (ages 15-19)	78.6 per 1000 girls 15-19, 1994-1996					51.9 per 1000 girls 15-19, 2001-2003	27
<b>Child Abuse &amp; Neglect</b>	12.0 confirmed per 1000 children, FY 1995-1997	-11.4%				13.4 confirmed per 1000 children, FY 2002-04	28
<b>High School Dropouts</b>	0.7% of grades 9-12, SY 2001/02-2003/04					<i>Trend data available in future Factbooks</i>	N/A
<b>Juvenile Violent Crime Arrests</b>	141.5 per 100,000 youths 10-17, 1994-1996	-45.3%				205.6 per 100,000 youths 10-17, 2001-2003	56
<b>Mortality</b>							
Infant Mortality (under age 1)	10.9 per 1000 live births, 1994-1996					8.0 per 1000 live births, 2001-2003	tied for 49
Child Death (age 1-14)	17.6 per 100,000 children 1-14, 1994-1996	-174.6%				48.3 per 100,000 children 1-14, 2001-2003	64
Teen Death (ages 15-19)	48.5 per 100,000 teens 15-19, 1994-1996	-245.6%				167.8 per 100,000 teens 15-19, 2001-2003	74
Child and Teen Death (ages 1-19)	25.8 per 100,000 youth 1-19, 1994-1996	-215.4%				81.4 per 100,000 youth 1-19, 2001-2003	71
<b>Economic Cluster</b>	202 Economic Index, 1994-1996					193 Economic Index, 2001-2003	51

Change of more than 110%—positive or negative—are graphed with broken bar

■ state change

■ county change

### = zero base - cannot calculate change

County Rank (1 = best) (77 = worst)

## County Health Indicators

### Health Resources

The following medical facilities are physically located within **Nowata County**

YES	Hospital serving general population
NO	Hospital specializing in care for specific population, procedure or condition
NO	County or City/County Health Department
NO	Non-health dept. community-based clinic receiving selected federal funding
YES	Community Health Center
YES	Clinic or health center serving native population
YES	Community Mental Health Center

The following medical practitioners are located in **Nowata County**

5	Physicians	( 0.5 per 1000 people)
127	Nurses	( 11.8 per 1000 people)
1	Dentists	( 0.1 per 1000 people)

The following community partnerships serve **Nowata County**

NO	Turning Point
NO	Systems of Care

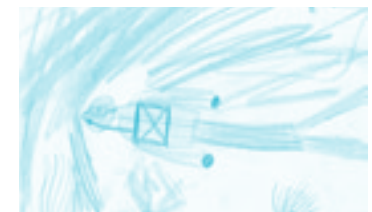
### Health Status

Rate		Rank
65.7%	Birth mothers received adequate prenatal care	29
0.0/10,000	Infants/Toddlers exposed to lead	tied for 1
n/a	Two-year olds immunized	n/a
97.5%	Eligible children covered by Medicaid/SCHIP	27
205.6/100,000	Juvenile arrests for drug & alcohol related offenses	6
11.6/100,000	Children & teen deaths from disease	33

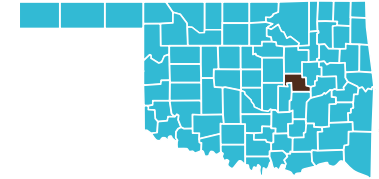
### Overall Health Status Rank

**4**

Part of **Nowata County** is designated as a medically underserved area.



# Okfuskee County



County Seat: **Okemah**

Number of Children (2003): 2,693  
Children are 23.1% of the county population

Number of Poor Children (2002): 751  
Child Poverty Rate (2002): 28.1%

Economic Cluster #5: Poorest

Indicator	Base Data	-	Worsened	Improved	+	Recent Data	Rank
<b>Birthweight</b>							
Low Birthweight (under 5½ lbs)	10.0% of live births, 1994-1996					6.4% of live births, 2001-2003	17
Very Low Birthweight (under 3lbs,5oz)	2.0% of live births, 1994-1996					1.2% of live births, 2001-2003	39
<b>Births to Teens</b>							
Births to Young Teens (ages 15-17)	49.0 per 1000 girls 15-17, 1994-1996					33.4 per 1000 girls 15-17, 2001-2003	56
Births to Older Teens (ages 18-19)	128.0 per 1000 girls 18-19, 1994-1996					110.2 per 1000 girls 18-19, 2001-2003	40
Births to Teens (ages 15-19)	75.9 per 1000 girls 15-19, 1994-1996					62.4 per 1000 girls 15-19, 2001-2003	44
<b>Child Abuse &amp; Neglect</b>	7.6 confirmed per 1000 children, FY 1995-1997	-63.9%				12.5 confirmed per 1000 children, FY 2002-04	27
<b>High School Dropouts</b>	3.1% of grades 9-12, SY 2001/02-2003/04					<i>Trend data available in future Factbooks</i>	N/A
<b>Juvenile Violent Crime Arrests</b>	243.2 per 100,000 youths 10-17, 1994-1996					128.8 per 100,000 youths 10-17, 2001-2003	41
<b>Mortality</b>							
Infant Mortality (under age 1)	12.2 per 1000 live births, 1994-1996					2.4 per 1000 live births, 2001-2003	8
Child Death (age 1-14)	14.9 per 100,000 children 1-14, 1994-1996	-8.0%				16.1 per 100,000 children 1-14, 2001-2003	9
Teen Death (ages 15-19)	75.6 per 100,000 teens 15-19, 1994-1996					39.2 per 100,000 teens 15-19, 2001-2003	14
Child and Teen Death (ages 1-19)	32.1 per 100,000 youth 1-19, 1994-1996					22.9 per 100,000 youth 1-19, 2001-2003	7
<b>Economic Cluster</b>	264 Economic Index, 1994-1996	-6.4%				281 Economic Index, 2001-2003	75

Change of more than 110%—positive or negative—are graphed with broken bar

■ state change

■ county change

### = zero base - cannot calculate change

County Rank (1 = best) (77 = worst)

## County Health Indicators

### Health Resources

The following medical facilities are physically located within **Okfuskee County**

NO	Hospital serving general population
YES	Hospital specializing in care for specific population, procedure or condition
YES	County or City/County Health Department
NO	Non-health dept. community-based clinic receiving selected federal funding
NO	Community Health Center
YES	Clinic or health center serving native population
YES	Community Mental Health Center

The following medical practitioners are located in **Okfuskee County**

7	Physicians	( 0.6 per 1000 people)
136	Nurses	( 11.7 per 1000 people)
2	Dentists	( 0.2 per 1000 people)

The following community partnerships serve **Okfuskee County**

YES	Turning Point
YES	Systems of Care

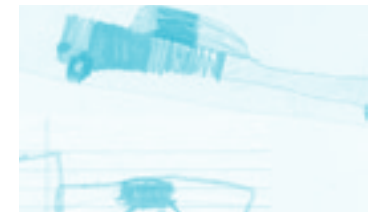
### Health Status

Rate		Rank
55.5%	Birth mothers received adequate prenatal care	56
13.3/10,000	Infants/Toddlers exposed to lead	63
n/a	Two-year olds immunized	n/a
94.1%	Eligible children covered by Medicaid/SCHIP	38
3,220.0/100,000	Juvenile arrests for drug & alcohol related offenses	77
11.4/100,000	Children & teen deaths from disease	31

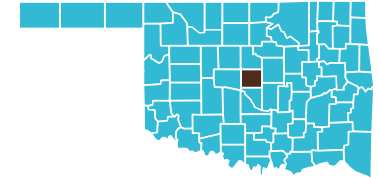
### Overall Health Status Rank

**72**

All of **Okfuskee County** is designated as a medically underserved area.



# Oklahoma County



County Seat: **Oklahoma City**

Number of Children (2003): 172,747  
Children are 25.6% of the county population

Number of Poor Children (2002): 37,866  
Child Poverty Rate (2002): 21.9%

Economic Cluster #4: Poorer

Indicator	Base Data	-	Worsened	Improved	+	Recent Data	Rank
<b>Birthweight</b>							
Low Birthweight (under 5½ lbs)	8.1% of live births, 1994-1996	-9.7%				8.9% of live births, 2001-2003	61
Very Low Birthweight (under 3lbs,5oz)	1.4% of live births, 1994-1996	-9.6%				1.5% of live births, 2001-2003	61
<b>Births to Teens</b>							
Births to Young Teens (ages 15-17)	44.5 per 1000 girls 15-17, 1994-1996				10.7%	39.7 per 1000 girls 15-17, 2001-2003	69
Births to Older Teens (ages 18-19)	109.8 per 1000 girls 18-19, 1994-1996	-1.5%				111.5 per 1000 girls 18-19, 2001-2003	43
Births to Teens (ages 15-19)	70.7 per 1000 girls 15-19, 1994-1996				2.3%	69.1 per 1000 girls 15-19, 2001-2003	62
<b>Child Abuse &amp; Neglect</b>	15.5 confirmed per 1000 children, FY 1995-1997	-13.5%				17.6 confirmed per 1000 children, FY 2002-04	43
<b>High School Dropouts</b>	4.8% of grades 9-12, SY 2001/02-2003/04					<i>Trend data available in future Factbooks</i>	N/A
<b>Juvenile Violent Crime Arrests</b>	672.7 per 100,000 youths 10-17, 1994-1996				60.6%	264.9 per 100,000 youths 10-17, 2001-2003	61
<b>Mortality</b>							
Infant Mortality (under age 1)	9.3 per 1000 live births, 1994-1996				9.5%	8.4 per 1000 live births, 2001-2003	52
Child Death (age 1-14)	38.5 per 100,000 children 1-14, 1994-1996				32.6%	25.9 per 100,000 children 1-14, 2001-2003	32
Teen Death (ages 15-19)	97.9 per 100,000 teens 15-19, 1994-1996				27.0%	71.5 per 100,000 teens 15-19, 2001-2003	31
Child and Teen Death (ages 1-19)	53.8 per 100,000 youth 1-19, 1994-1996				29.8%	37.7 per 100,000 youth 1-19, 2001-2003	25
<b>Economic Cluster</b>	136 Economic Index, 1994-1996	-22.1%				166 Economic Index, 2001-2003	42

Change of more than 110%—positive or negative—are graphed with broken bar

■ state change

■ county change

### = zero base - cannot calculate change

County Rank (1 = best) (77 = worst)

## County Health Indicators

### Health Resources

The following medical facilities are physically located within **Oklahoma County**

- YES Hospital serving general population
- YES Hospital specializing in care for specific population, procedure or condition
- YES County or City/County Health Department
- YES Non-health dept. community-based clinic receiving selected federal funding
- YES Community Health Center
- YES Clinic or health center serving native population
- YES Community Mental Health Center

The following medical practitioners are located in **Oklahoma County**

- 2,402 Physicians ( 3.6 per 1000 people)
- 9,218 Nurses ( 13.7 per 1000 people)
- 552 Dentists ( 0.8 per 1000 people)

The following community partnerships serve **Oklahoma County**

- YES Turning Point
- YES Systems of Care

### Health Status

Rate	Rank
65.6%	30
3.2/10,000	42
69.0%	16
90.7%	49
1,216.8/100,000	66
17.6/100,000	53

Birth mothers received adequate prenatal care  
Infants/Toddlers exposed to lead  
Two-year olds immunized  
Eligible children covered by Medicaid/SCHIP  
Juvenile arrests for drug & alcohol related offenses  
Children & teen deaths from disease

### Overall Health Status Rank

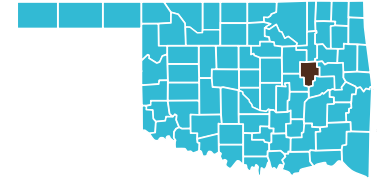
**Tied for 55**

Part of **Oklahoma County** is designated as a medically underserved area.





# Okmulgee County



County Seat: Okmulgee

Number of Children (2003): 10,287

Number of Poor Children (2002): 2,648

Economic Cluster #5: Poorest

Children are 25.9% of the county population

Child Poverty Rate (2002): 25.8%

Indicator	Base Data	-	Worsened	Improved	+	Recent Data	Rank
<b>Birthweight</b>							
Low Birthweight (under 5½ lbs)	7.4% of live births, 1994-1996	-0.4%				7.5% of live births, 2001-2003	35
Very Low Birthweight (under 3lbs,5oz)	1.4% of live births, 1994-1996	-14.9%				1.6% of live births, 2001-2003	64
<b>Births to Teens</b>							
Births to Young Teens (ages 15-17)	49.2 per 1000 girls 15-17, 1994-1996				39.5%	29.8 per 1000 girls 15-17, 2001-2003	39
Births to Older Teens (ages 18-19)	130.0 per 1000 girls 18-19, 1994-1996				12.6%	113.6 per 1000 girls 18-19, 2001-2003	47
Births to Teens (ages 15-19)	78.9 per 1000 girls 15-19, 1994-1996				20.5%	62.8 per 1000 girls 15-19, 2001-2003	45
<b>Child Abuse &amp; Neglect</b>	9.2 confirmed per 1000 children, FY 1995-1997	-74.0%				16.0 confirmed per 1000 children, FY 2002-04	37
<b>High School Dropouts</b>	2.6% of grades 9-12, SY 2001/02-2003/04					<i>Trend data available in future Factbooks</i>	N/A
<b>Juvenile Violent Crime Arrests</b>	323.4 per 100,000 youths 10-17, 1994-1996				50.2%	161.2 per 100,000 youths 10-17, 2001-2003	51
<b>Mortality</b>							
Infant Mortality (under age 1)	8.9 per 1000 live births, 1994-1996	-13.1%				10.0 per 1000 live births, 2001-2003	58
Child Death (age 1-14)	29.7 per 100,000 children 1-14, 1994-1996				71.9%	8.3 per 100,000 children 1-14, 2001-2003	5
Teen Death (ages 15-19)	77.9 per 100,000 teens 15-19, 1994-1996				32.6%	52.5 per 100,000 teens 15-19, 2001-2003	23
Child and Teen Death (ages 1-19)	43.0 per 100,000 youth 1-19, 1994-1996				51.4%	20.9 per 100,000 youth 1-19, 2001-2003	5
<b>Economic Cluster</b>	255 Economic Index, 1994-1996				7.1%	237 Economic Index, 2001-2003	66

Change of more than 110%—positive or negative—are graphed with broken bar

■ state change

■ county change

### = zero base - cannot calculate change

County Rank (1 = best) (77 = worst)

## County Health Indicators

### Health Resources

The following medical facilities are physically located within Okmulgee County

YES	Hospital serving general population
YES	Hospital specializing in care for specific population, procedure or condition
YES	County or City/County Health Department
NO	Non-health dept. community-based clinic receiving selected federal funding
NO	Community Health Center
YES	Clinic or health center serving native population
YES	Community Mental Health Center

The following medical practitioners are located in Okmulgee County

36	Physicians	( 0.9 per 1000 people)
428	Nurses	( 10.7 per 1000 people)
10	Dentists	( 0.3 per 1000 people)

The following community partnerships serve Okmulgee County

YES	Turning Point
YES	Systems of Care

### Health Status

Rate		Rank
58.4%	Birth mothers received adequate prenatal care	49
41.1/10,000	Infants/Toddlers exposed to lead	72
68.0%	Two-year olds immunized	18
100.0%	Eligible children covered by Medicaid/SCHIP	tied for 1
886.7/100,000	Juvenile arrests for drug & alcohol related offenses	45
9.0/100,000	Children & teen deaths from disease	22

### Overall Health Status Rank

**Tied for 29**

All of Okmulgee County is designated as a medically underserved area.

