

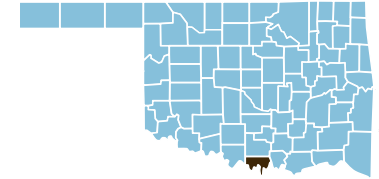
# Love County

County Seat: Marietta

Number of Children (2003): 2,124  
Children are 23.9% of the county population

Number of Poor Children (2002): 411  
Child Poverty Rate (2002): 19.4%

Economic Cluster #3: Middle



Indicator	Base Data	-	Worsened	Improved	+	Recent Data	Rank
<b>Birthweight</b>							
Low Birthweight (under 5½ lbs)	5.9% of live births, 1994-1996	-47.8%				8.7% of live births, 2001-2003	60
Very Low Birthweight (under 3lbs,5oz)	0.3% of live births, 1994-1996	-259.0%				1.2% of live births, 2001-2003	41
<b>Births to Teens</b>							
Births to Young Teens (ages 15-17)	36.5 per 1000 girls 15-17, 1994-1996				39.7%	22.0 per 1000 girls 15-17, 2001-2003	20
Births to Older Teens (ages 18-19)	142.2 per 1000 girls 18-19, 1994-1996				33.1%	95.1 per 1000 girls 18-19, 2001-2003	30
Births to Teens (ages 15-19)	64.1 per 1000 girls 15-19, 1994-1996				21.3%	50.4 per 1000 girls 15-19, 2001-2003	25
<b>Child Abuse &amp; Neglect</b>	16.7 confirmed per 1000 children, FY 1995-1997	-30.1%				21.7 confirmed per 1000 children, FY 2002-04	59
<b>High School Dropouts</b>	0.8% of grades 9-12, SY 2001/02-2003/04					<i>Trend data available in future Factbooks</i>	N/A
<b>Juvenile Violent Crime Arrests</b>	64.4 per 100,000 youths 10-17, 1994-1996	-46.5%				94.4 per 100,000 youths 10-17, 2001-2003	30
<b>Mortality</b>							
Infant Mortality (under age 1)	3.5 per 1000 live births, 1994-1996	-169.3%				9.3 per 1000 live births, 2001-2003	55
Child Death (age 1-14)	39.5 per 100,000 children 1-14, 1994-1996				48.2%	20.5 per 100,000 children 1-14, 2001-2003	16
Teen Death (ages 15-19)	102.6 per 100,000 teens 15-19, 1994-1996				0.5%	102.1 per 100,000 teens 15-19, 2001-2003	53
Child and Teen Death (ages 1-19)	57.0 per 100,000 youth 1-19, 1994-1996				23.2%	43.8 per 100,000 youth 1-19, 2001-2003	35
<b>Economic Cluster</b>	161 Economic Index, 1994-1996				2.5%	157 Economic Index, 2001-2003	40

Change of more than 110%—positive or negative—are graphed with broken bar

■ state change

■ county change

### = zero base - cannot calculate change

County Rank (1 = best) (77 = worst)

## County Health Indicators

### Health Resources

The following medical facilities are physically located within Love County

YES	Hospital serving general population
NO	Hospital specializing in care for specific population, procedure or condition
YES	County or City/County Health Department
NO	Non-health dept. community-based clinic receiving selected federal funding
NO	Community Health Center
NO	Clinic or health center serving native population
YES	Community Mental Health Center

The following medical practitioners are located in Love County

3	Physicians	(0.3 per 1000 people)
87	Nurses	(9.8 per 1000 people)
1	Dentists	(0.1 per 1000 people)

The following community partnerships serve Love County

YES	Turning Point
YES	Systems of Care

### Health Status

#### Rate

69.2%  
0.0/10,000  
44.6%  
100.0%  
377.7/100,000  
14.6/100,000

Birth mothers received adequate prenatal care  
Infants/Toddlers exposed to lead  
Two-year olds immunized  
Eligible children covered by Medicaid/SCHIP  
Juvenile arrests for drug & alcohol related offenses  
Children & teen deaths from disease

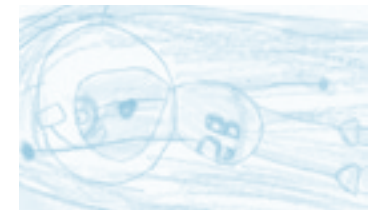
#### Rank

21  
tied for 1  
76  
tied for 1  
13  
43

### Overall Health Status Rank

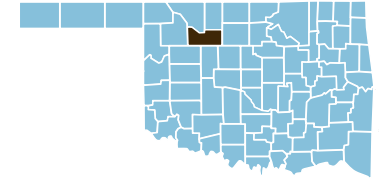
9

All of Love County is designated as a medically underserved area.



# Major County

County Seat: Fairview



Number of Children (2003): 1,646  
Children are 22.2% of the county population

Number of Poor Children (2002): 277  
Child Poverty Rate (2002): 16.8%

Economic Cluster #1: Wealthiest

Indicator	Base Data	-	Worsened	Improved	+	Recent Data	Rank
<b>Birthweight</b>							
Low Birthweight (under 5½ lbs)	2.3% of live births, 1994-1996	-253.5%				8.1% of live births, 2001-2003	51
Very Low Birthweight (under 3lbs,5oz)	0.5% of live births, 1994-1996	-292.8%				1.8% of live births, 2001-2003	70
<b>Births to Teens</b>							
Births to Young Teens (ages 15-17)	16.7 per 1000 girls 15-17, 1994-1996				37.0%	10.5 per 1000 girls 15-17, 2001-2003	5
Births to Older Teens (ages 18-19)	100.0 per 1000 girls 18-19, 1994-1996				32.3%	67.7 per 1000 girls 18-19, 2001-2003	11
Births to Teens (ages 15-19)	42.3 per 1000 girls 15-19, 1994-1996				21.8%	33.1 per 1000 girls 15-19, 2001-2003	8
<b>Child Abuse &amp; Neglect</b>	13.6 confirmed per 1000 children, FY 1995-1997				12.2%	11.9 confirmed per 1000 children, FY 2002-04	22
<b>High School Dropouts</b>	1.5% of grades 9-12, SY 2001/02-2003/04					<i>Trend data available in future Factbooks</i>	N/A
<b>Juvenile Violent Crime Arrests</b>	237.7 per 100,000 youths 10-17, 1994-1996				100.0%	0.0 per 100,000 youths 10-17, 2001-2003	tied for 1
<b>Mortality</b>							
Infant Mortality (under age 1)	0.0 per 1000 live births, 1994-1996				###	22.6 per 1000 live births, 2001-2003	76
Child Death (age 1-14)	60.7 per 100,000 children 1-14, 1994-1996				57.0%	26.1 per 100,000 children 1-14, 2001-2003	33
Teen Death (ages 15-19)	64.4 per 100,000 teens 15-19, 1994-1996	-83.7%				118.3 per 100,000 teens 15-19, 2001-2003	60
Child and Teen Death (ages 1-19)	61.6 per 100,000 youth 1-19, 1994-1996				11.8%	54.3 per 100,000 youth 1-19, 2001-2003	53
<b>Economic Cluster</b>	50 Economic Index, 1994-1996	-42.0%				71 Economic Index, 2001-2003	13

Change of more than 110%—positive or negative—are graphed with broken bar

■ state change

■ county change

### = zero base - cannot calculate change

County Rank (1 = best) (77 = worst)

## County Health Indicators

### Health Resources

The following medical facilities are physically located within Major County

YES	Hospital serving general population
NO	Hospital specializing in care for specific population, procedure or condition
YES	County or City/County Health Department
NO	Non-health dept. community-based clinic receiving selected federal funding
NO	Community Health Center
NO	Clinic or health center serving native population
YES	Community Mental Health Center

The following medical practitioners are located in Major County

5	Physicians	( 0.7 per 1000 people)
90	Nurses	( 12.0 per 1000 people)
2	Dentists	( 0.3 per 1000 people)

The following community partnerships serve Major County

NO	Turning Point
NO	Systems of Care

### Health Status

Rate		Rank
80.3%	Birth mothers received adequate prenatal care	2
0.0/10,000	Infants/Toddlers exposed to lead	tied for 1
65.6%	Two-year olds immunized	27
67.2%	Eligible children covered by Medicaid/SCHIP	70
37.8/100,000	Juvenile arrests for drug & alcohol related offenses	4
18.1/100,000	Children & teen deaths from disease	55

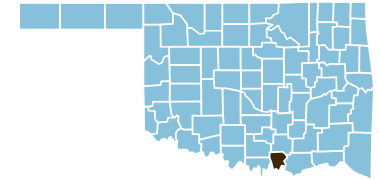
### Overall Health Status Rank

10

None of Major County is designated as a medically underserved area.



# Marshall County



County Seat: Madill

Number of Children (2003): 3,124  
Children are 22.9% of the county population

Number of Poor Children (2002): 673  
Child Poverty Rate (2002): 21.7%

Economic Cluster #5: Poorest

Indicator	Base Data	-	Worsened	Improved	+	Recent Data	Rank
<b>Birthweight</b>							
Low Birthweight (under 5½ lbs)	8.5% of live births, 1994-1996					7.8% of live births, 2001-2003	46
Very Low Birthweight (under 3lbs,5oz)	1.1% of live births, 1994-1996	-25.5%				1.4% of live births, 2001-2003	52
<b>Births to Teens</b>							
Births to Young Teens (ages 15-17)	38.7 per 1000 girls 15-17, 1994-1996					31.3 per 1000 girls 15-17, 2001-2003	48
Births to Older Teens (ages 18-19)	132.7 per 1000 girls 18-19, 1994-1996					118.3 per 1000 girls 18-19, 2001-2003	56
Births to Teens (ages 15-19)	72.6 per 1000 girls 15-19, 1994-1996					63.3 per 1000 girls 15-19, 2001-2003	49
<b>Child Abuse &amp; Neglect</b>	17.3 confirmed per 1000 children, FY 1995-1997	-50.3%				26.0 confirmed per 1000 children, FY 2002-04	72
<b>High School Dropouts</b>	1.1% of grades 9-12, SY 2001/02-2003/04					<i>Trend data available in future Factbooks</i>	N/A
<b>Juvenile Violent Crime Arrests</b>	217.7 per 100,000 youths 10-17, 1994-1996					70.8 per 100,000 youths 10-17, 2001-2003	16
<b>Mortality</b>							
Infant Mortality (under age 1)	10.9 per 1000 live births, 1994-1996					5.8 per 1000 live births, 2001-2003	24
Child Death (age 1-14)	65.2 per 100,000 children 1-14, 1994-1996					28.1 per 100,000 children 1-14, 2001-2003	36
Teen Death (ages 15-19)	113.9 per 100,000 teens 15-19, 1994-1996					37.5 per 100,000 teens 15-19, 2001-2003	12
Child and Teen Death (ages 1-19)	79.9 per 100,000 youth 1-19, 1994-1996					30.7 per 100,000 youth 1-19, 2001-2003	16
<b>Economic Cluster</b>	177 Economic Index, 1994-1996	-11.3%				197 Economic Index, 2001-2003	53

Change of more than 110%—positive or negative—are graphed with broken bar

■ state change

■ county change

### = zero base - cannot calculate change

County Rank (1 = best) (77 = worst)

## County Health Indicators

### Health Resources

The following medical facilities are physically located within Marshall County

YES	Hospital serving general population
NO	Hospital specializing in care for specific population, procedure or condition
YES	County or City/County Health Department
NO	Non-health dept. community-based clinic receiving selected federal funding
NO	Community Health Center
NO	Clinic or health center serving native population
YES	Community Mental Health Center

The following medical practitioners are located in Marshall County

9	Physicians	( 0.7 per 1000 people)
133	Nurses	( 9.8 per 1000 people)
3	Dentists	( 0.2 per 1000 people)

The following community partnerships serve Marshall County

YES	Turning Point
NO	Systems of Care

### Health Status

Rate		Rank
51.3%	Birth mothers received adequate prenatal care	66
10.5/10,000	Infants/Toddlers exposed to lead	59
67.9%	Two-year olds immunized	tied for 19
100.0%	Eligible children covered by Medicaid/SCHIP	tied for 1
1,322.3/100,000	Juvenile arrests for drug & alcohol related offenses	67
10.2/100,000	Children & teen deaths from disease	27

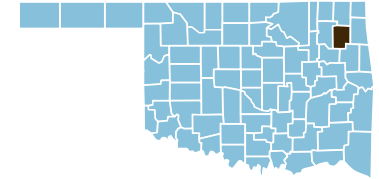
### Overall Health Status Rank

**48**

All of Marshall County is designated as a medically underserved area.



# Mayes County



County Seat: Pryor

Number of Children (2003): 9,930  
Children are 25.5% of the county population

Number of Poor Children (2002): 2,231  
Child Poverty Rate (2002): 22.7%

Economic Cluster #5: Poorest

Indicator	Base Data	-	Worsened	Improved	+	Recent Data	Rank
<b>Birthweight</b>							
Low Birthweight (under 5½ lbs)	7.4% of live births, 1994-1996				1.2%	7.3% of live births, 2001-2003	29
Very Low Birthweight (under 3lbs,5oz)	1.5% of live births, 1994-1996				15.4%	1.2% of live births, 2001-2003	42
<b>Births to Teens</b>							
Births to Young Teens (ages 15-17)	48.9 per 1000 girls 15-17, 1994-1996				48.8%	25.0 per 1000 girls 15-17, 2001-2003	32
Births to Older Teens (ages 18-19)	131.0 per 1000 girls 18-19, 1994-1996				11.8%	115.6 per 1000 girls 18-19, 2001-2003	52
Births to Teens (ages 15-19)	78.1 per 1000 girls 15-19, 1994-1996				26.0%	57.7 per 1000 girls 15-19, 2001-2003	37
<b>Child Abuse &amp; Neglect</b>	18.1 confirmed per 1000 children, FY 1995-1997				32.8%	12.2 confirmed per 1000 children, FY 2002-04	23
<b>High School Dropouts</b>	3.5% of grades 9-12, SY 2001/02-2003/04					<i>Trend data available in future Factbooks</i>	N/A
<b>Juvenile Violent Crime Arrests</b>	69.4 per 100,000 youths 10-17, 1994-1996	-31.9%				91.5 per 100,000 youths 10-17, 2001-2003	27
<b>Mortality</b>							
Infant Mortality (under age 1)	12.7 per 1000 live births, 1994-1996				53.6%	5.9 per 1000 live births, 2001-2003	25
Child Death (age 1-14)	44.8 per 100,000 children 1-14, 1994-1996				70.7%	13.1 per 100,000 children 1-14, 2001-2003	6
Teen Death (ages 15-19)	63.8 per 100,000 teens 15-19, 1994-1996	-113.2%				136.1 per 100,000 teens 15-19, 2001-2003	66
Child and Teen Death (ages 1-19)	49.7 per 100,000 youth 1-19, 1994-1996				4.8%	47.3 per 100,000 youth 1-19, 2001-2003	45
<b>Economic Cluster</b>	161 Economic Index, 1994-1996	-17.4%				189 Economic Index, 2001-2003	tied for 47

Change of more than 110%—positive or negative—are graphed with broken bar

■ state change

■ county change

### = zero base - cannot calculate change

County Rank (1 = best) (77 = worst)

## County Health Indicators

### Health Resources

The following medical facilities are physically located within Mayes County

- YES Hospital serving general population
- NO Hospital specializing in care for specific population, procedure or condition
- YES County or City/County Health Department
- NO Non-health dept. community-based clinic receiving selected federal funding
- NO Community Health Center
- YES Clinic or health center serving native population
- YES Community Mental Health Center

The following medical practitioners are located in Mayes County

- 24 Physicians (0.6 per 1000 people)
- 488 Nurses (12.6 per 1000 people)
- 12 Dentists (0.3 per 1000 people)

The following community partnerships serve Mayes County

- YES Turning Point
- NO Systems of Care

### Health Status

Rate		Rank
62.8%	Birth mothers received adequate prenatal care	36
21.3/10,000	Infants/Toddlers exposed to lead	69
65.3%*	Two-year olds immunized	tied for 29
100.0%	Eligible children covered by Medicaid/SCHIP	tied for 1
471.4/100,000	Juvenile arrests for drug & alcohol related offenses	22
15.8/100,000	Children & teen deaths from disease	48

\*2003 data displayed. May be low due to vaccine shortage.

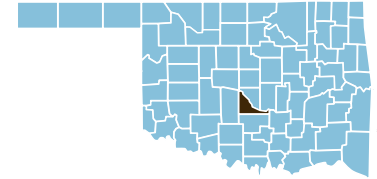
### Overall Health Status Rank

**27**

All of Mayes County is designated as a medically underserved area.



# McClain County



County Seat: Purcell

Number of Children (2003): 7,118  
Children are 24.9% of the county population

Number of Poor Children (2002): 1,072  
Child Poverty Rate (2002): 15.0%

Economic Cluster #1: Wealthiest

Indicator	Base Data	-	Worsened	Improved	+	Recent Data	Rank
<b>Birthweight</b>							
Low Birthweight (under 5½ lbs)	4.8% of live births, 1994-1996	-55.4%				7.5% of live births, 2001-2003	36
Very Low Birthweight (under 3lbs,5oz)	0.4% of live births, 1994-1996	-270.2%				1.6% of live births, 2001-2003	65
<b>Births to Teens</b>							
Births to Young Teens (ages 15-17)	20.4 per 1000 girls 15-17, 1994-1996				8.7%	18.7 per 1000 girls 15-17, 2001-2003	12
Births to Older Teens (ages 18-19)	74.7 per 1000 girls 18-19, 1994-1996	-11.8%				83.5 per 1000 girls 18-19, 2001-2003	23
Births to Teens (ages 15-19)	38.3 per 1000 girls 15-19, 1994-1996	-11.2%				42.6 per 1000 girls 15-19, 2001-2003	17
<b>Child Abuse &amp; Neglect</b>	16.2 confirmed per 1000 children, FY 1995-1997				12.5%	14.2 confirmed per 1000 children, FY 2002-04	32
<b>High School Dropouts</b>	2.9% of grades 9-12, SY 2001/02-2003/04					<i>Trend data available in future Factbooks</i>	N/A
<b>Juvenile Violent Crime Arrests</b>	42.4 per 100,000 youths 10-17, 1994-1996	-153.0%				107.3 per 100,000 youths 10-17, 2001-2003	37
<b>Mortality</b>							
Infant Mortality (under age 1)	5.4 per 1000 live births, 1994-1996	-15.2%				6.2 per 1000 live births, 2001-2003	29
Child Death (age 1-14)	37.7 per 100,000 children 1-14, 1994-1996				34.7%	24.6 per 100,000 children 1-14, 2001-2003	26
Teen Death (ages 15-19)	98.5 per 100,000 teens 15-19, 1994-1996				38.6%	60.4 per 100,000 teens 15-19, 2001-2003	26
Child and Teen Death (ages 1-19)	54.5 per 100,000 youth 1-19, 1994-1996				35.9%	34.9 per 100,000 youth 1-19, 2001-2003	22
<b>Economic Cluster</b>	55 Economic Index, 1994-1996	-9.1%				60 Economic Index, 2001-2003	9

Change of more than 110%—positive or negative—are graphed with broken bar

■ state change

■ county change

### = zero base - cannot calculate change

County Rank (1 = best) (77 = worst)

## County Health Indicators

### Health Resources

The following medical facilities are physically located within McClain County

YES	Hospital serving general population
NO	Hospital specializing in care for specific population, procedure or condition
YES	County or City/County Health Department
NO	Non-health dept. community-based clinic receiving selected federal funding
NO	Community Health Center
NO	Clinic or health center serving native population
YES	Community Mental Health Center

The following medical practitioners are located in McClain County

15	Physicians	(0.5 per 1000 people)
443	Nurses	(15.7 per 1000 people)
6	Dentists	(0.2 per 1000 people)

The following community partnerships serve McClain County

NO	Turning Point
YES	Systems of Care

### Health Status

Rate		Rank
73.4%	Birth mothers received adequate prenatal care	13
0.0/10,000	Infants/Toddlers exposed to lead	tied for 1
67.5%	Two-year olds immunized	tied for 21
78.2%	Eligible children covered by Medicaid/SCHIP	60
946.2/100,000	Juvenile arrests for drug & alcohol related offenses	49
8.7/100,000	Children & teen deaths from disease	20

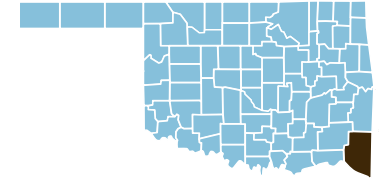
### Overall Health Status Rank

**Tied for 11**



All of McClain County is designated as a medically underserved area.

# McCurtain County



County Seat: Idabel

Number of Children (2003): 9,229  
Children are 27.1% of the county population

Number of Poor Children (2002): 2,944  
Child Poverty Rate (2002): 31.8%

Economic Cluster #5: Poorest

Indicator	Base Data	-	Worsened	Improved	+	Recent Data	Rank
<b>Birthweight</b>							
Low Birthweight (under 5½ lbs)	7.2% of live births, 1994-1996				6.4%	6.8% of live births, 2001-2003	22
Very Low Birthweight (under 3lbs,5oz)	0.8% of live births, 1994-1996				29.4%	0.5% of live births, 2001-2003	10
<b>Births to Teens</b>							
Births to Young Teens (ages 15-17)	43.8 per 1000 girls 15-17, 1994-1996				5.2%	41.5 per 1000 girls 15-17, 2001-2003	73
Births to Older Teens (ages 18-19)	176.2 per 1000 girls 18-19, 1994-1996				29.6%	124.0 per 1000 girls 18-19, 2001-2003	62
Births to Teens (ages 15-19)	88.3 per 1000 girls 15-19, 1994-1996				16.8%	73.4 per 1000 girls 15-19, 2001-2003	68
<b>Child Abuse &amp; Neglect</b>	18.1 confirmed per 1000 children, FY 1995-1997	-12.4%				20.4 confirmed per 1000 children, FY 2002-04	53
<b>High School Dropouts</b>	2.2% of grades 9-12, SY 2001/02-2003/04					<i>Trend data available in future Factbooks</i>	N/A
<b>Juvenile Violent Crime Arrests</b>	387.8 per 100,000 youths 10-17, 1994-1996				64.6%	137.3 per 100,000 youths 10-17, 2001-2003	45
<b>Mortality</b>							
Infant Mortality (under age 1)	7.7 per 1000 live births, 1994-1996	-5.9%				8.2 per 1000 live births, 2001-2003	51
Child Death (age 1-14)	21.4 per 100,000 children 1-14, 1994-1996	-7.7%				23.0 per 100,000 children 1-14, 2001-2003	19
Teen Death (ages 15-19)	153.2 per 100,000 teens 15-19, 1994-1996				23.3%	117.4 per 100,000 teens 15-19, 2001-2003	59
Child and Teen Death (ages 1-19)	56.5 per 100,000 youth 1-19, 1994-1996				15.6%	47.6 per 100,000 youth 1-19, 2001-2003	47
<b>Economic Cluster</b>	264 Economic Index, 1994-1996				3.4%	255 Economic Index, 2001-2003	tied for 69

Change of more than 110%—positive or negative—are graphed with broken bar

■ state change

■ county change

### = zero base - cannot calculate change

County Rank (1 = best) (77 = worst)

## County Health Indicators

### Health Resources

The following medical facilities are physically located within McCurtain County

YES	Hospital serving general population
NO	Hospital specializing in care for specific population, procedure or condition
YES	County or City/County Health Department
NO	Non-health dept. community-based clinic receiving selected federal funding
YES	Community Health Center
YES	Clinic or health center serving native population
YES	Community Mental Health Center

The following medical practitioners are located in McCurtain County

22	Physicians	( 0.6 per 1000 people)
409	Nurses	( 12.0 per 1000 people)
7	Dentists	( 0.2 per 1000 people)

The following community partnerships serve McCurtain County

YES	Turning Point
NO	Systems of Care

### Health Status

Rate		Rank
71.6%	Birth mothers received adequate prenatal care	19
3.7/10,000	Infants/Toddlers exposed to lead	45
60.2%*	Two-year olds immunized	55
97.1%	Eligible children covered by Medicaid/SCHIP	30
907.9/100,000	Juvenile arrests for drug & alcohol related offenses	46
10.2/100,000	Children & teen deaths from disease	26

\*2003 data displayed. May be low due to vaccine shortage.

### Overall Health Status Rank

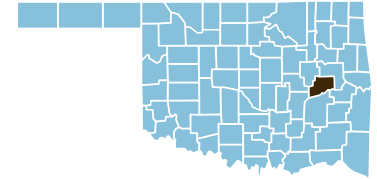
**Tied for 38**

All of McCurtain County is designated as a medically underserved area.





# McIntosh County



County Seat: Eufaula

Number of Children (2003): 4,358  
Children are 22.1% of the county population

Number of Poor Children (2002): 1,246  
Child Poverty Rate (2002): 28.6%

Economic Cluster #5: Poorest

Indicator	Base Data	-	Worsened	Improved	+	Recent Data	Rank
<b>Birthweight</b>							
Low Birthweight (under 5½ lbs)	6.6% of live births, 1994-1996	-51.9%				10.0% of live births, 2001-2003	70
Very Low Birthweight (under 3lbs,5oz)	0.8% of live births, 1994-1996	-228.1%				2.6% of live births, 2001-2003	75
<b>Births to Teens</b>							
Births to Young Teens (ages 15-17)	33.6 per 1000 girls 15-17, 1994-1996				10.1%	30.2 per 1000 girls 15-17, 2001-2003	42
Births to Older Teens (ages 18-19)	152.8 per 1000 girls 18-19, 1994-1996				27.6%	110.7 per 1000 girls 18-19, 2001-2003	41
Births to Teens (ages 15-19)	69.1 per 1000 girls 15-19, 1994-1996				13.8%	59.6 per 1000 girls 15-19, 2001-2003	39
<b>Child Abuse &amp; Neglect</b>	27.4 confirmed per 1000 children, FY 1995-1997				15.3%	23.2 confirmed per 1000 children, FY 2002-04	65
<b>High School Dropouts</b>	2.5% of grades 9-12, SY 2001/02-2003/04					<i>Trend data available in future Factbooks</i>	N/A
<b>Juvenile Violent Crime Arrests</b>	235.1 per 100,000 youths 10-17, 1994-1996				1.4%	231.8 per 100,000 youths 10-17, 2001-2003	58
<b>Mortality</b>							
Infant Mortality (under age 1)	9.4 per 1000 live births, 1994-1996	-36.7%				12.9 per 1000 live births, 2001-2003	68
Child Death (age 1-14)	0.0 per 100,000 children 1-14, 1994-1996				###	20.4 per 100,000 children 1-14, 2001-2003	15
Teen Death (ages 15-19)	53.3 per 100,000 teens 15-19, 1994-1996				7.3%	49.4 per 100,000 teens 15-19, 2001-2003	19
Child and Teen Death (ages 1-19)	14.9 per 100,000 youth 1-19, 1994-1996	-93.6%				28.8 per 100,000 youth 1-19, 2001-2003	13
<b>Economic Cluster</b>	248 Economic Index, 1994-1996	-4.0%				258 Economic Index, 2001-2003	71

Change of more than 110%—positive or negative—are graphed with broken bar

■ state change

■ county change

### = zero base - cannot calculate change

County Rank (1 = best) (77 = worst)

## County Health Indicators

### Health Resources

The following medical facilities are physically located within McIntosh County

YES	Hospital serving general population
NO	Hospital specializing in care for specific population, procedure or condition
YES	County or City/County Health Department
NO	Non-health dept. community-based clinic receiving selected federal funding
NO	Community Health Center
YES	Clinic or health center serving native population
YES	Community Mental Health Center

The following medical practitioners are located in McIntosh County

10	Physicians	( 0.5 per 1000 people)
278	Nurses	( 14.1 per 1000 people)
9	Dentists	( 0.5 per 1000 people)

The following community partnerships serve McIntosh County

YES	Turning Point
NO	Systems of Care

### Health Status

Rate		Rank
56.2%	Birth mothers received adequate prenatal care	54
8.3/10,000	Infants/Toddlers exposed to lead	58
n/a	Two-year olds immunized	n/a
94.6%	Eligible children covered by Medicaid/SCHIP	37
1,066.1/100,000	Juvenile arrests for drug & alcohol related offenses	60
7.2/100,000	Children & teen deaths from disease	16

\*2003 data displayed. May be low due to vaccine shortage.

### Overall Health Status Rank

**Tied for 55**

All of McIntosh County is designated as a medically underserved area.

