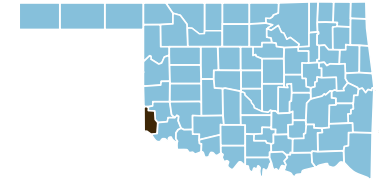


Harmon County



County Seat: Hollis

Number of Children (2003): 744
Children are 24.4% of the county population

Number of Poor Children (2002): 234
Child Poverty Rate (2002): 32.3%

Economic Cluster #5: Poorest

Indicator	Base Data	-	Worsened	Improved	+	Recent Data	Rank
Birthweight							
Low Birthweight (under 5½ lbs)	9.8% of live births, 1994-1996	-25.8%				12.4% of live births, 2001-2003	75
Very Low Birthweight (under 3lbs,5oz)	0.8% of live births, 1994-1996	-250.4%				2.7% of live births, 2001-2003	76
Births to Teens							
Births to Young Teens (ages 15-17)	44.1 per 1000 girls 15-17, 1994-1996				15.9%	37.0 per 1000 girls 15-17, 2001-2003	66
Births to Older Teens (ages 18-19)	184.0 per 1000 girls 18-19, 1994-1996				42.0%	106.7 per 1000 girls 18-19, 2001-2003	35
Births to Teens (ages 15-19)	93.8 per 1000 girls 15-19, 1994-1996				34.0%	61.9 per 1000 girls 15-19, 2001-2003	43
Child Abuse & Neglect	9.5 confirmed per 1000 children, FY 1995-1997	-96.9%				18.7 confirmed per 1000 children, FY 2002-04	47
High School Dropouts	3.3% of grades 9-12, SY 2001/02-2003/04					<i>Trend data available in future Factbooks</i>	N/A
Juvenile Violent Crime Arrests	293.3% per 100,000 youths 10-17, 1994-1996				14.5%	250.6 per 100,000 youths 10-17, 2001-2003	60
Mortality							
Infant Mortality (under age 1)	15.2 per 1000 live births, 1994-1996	-75.2%				26.5 per 1000 live births, 2001-2003	77
Child Death (age 1-14)	0.0 per 100,000 children 1-14, 1994-1996				###	120.9 per 100,000 children 1-14, 2001-2003	75
Teen Death (ages 15-19)	0.0 per 100,000 teens 15-19, 1994-1996				###	120.3 per 100,000 teens 15-19, 2001-2003	63
Child and Teen Death (ages 1-19)	0.0 per 100,000 youth 1-19, 1994-1996				###	120.7 per 100,000 youth 1-19, 2001-2003	77
Economic Cluster	216 Economic Index, 1994-1996	-3.7%				224 Economic Index, 2001-2003	61

Change of more than 110%—positive or negative—are graphed with broken bar

■ state change

■ county change

= zero base - cannot calculate change

County Rank (1 = best) (77 = worst)

County Health Indicators

Health Resources

The following medical facilities are physically located within Harmon County

YES	Hospital serving general population
NO	Hospital specializing in care for specific population, procedure or condition
YES	County or City/County Health Department
NO	Non-health dept. community-based clinic receiving selected federal funding
NO	Community Health Center
NO	Clinic or health center serving native population
NO	Community Mental Health Center

The following medical practitioners are located in Harmon County

2	Physicians	(0.6 per 1000 people)
43	Nurses	(14.0 per 1000 people)
0	Dentists	(0.0 per 1000 people)

The following community partnerships serve Harmon County

NO	Turning Point
NO	Systems of Care

Health Status

Rate		Rank
72.3%	Birth mothers received adequate prenatal care	17
0.0/10,000	Infants/Toddlers exposed to lead	tied for 1
67.5%	Two-year olds immunized	tied for 21
83.1%	Eligible children covered by Medicaid/SCHIP	56
1,670.8/100,000	Juvenile arrests for drug & alcohol related offenses	74
80.5/100,000	Children & teen deaths from disease	77

Overall Health Status Rank

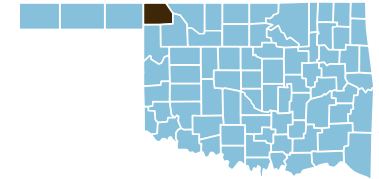
50



All of Harmon County is designated as a medically underserved area.

Harper County

County Seat: Buffalo



Number of Children (2003): 712
Children are 21.0% of the county population

Number of Poor Children (2002): 112
Child Poverty Rate (2002): 15.5%

Economic Cluster #1: Wealthiest

Indicator	Base Data	-	Worsened	Improved	+	Recent Data	Rank
Birthweight							
Low Birthweight (under 5½ lbs)	2.0% of live births, 1994-1996	-357.9%				9.3% of live births, 2001-2003	64
Very Low Birthweight (under 3lbs,5oz)	0.0% of live births, 1994-1996				###	3.7% of live births, 2001-2003	77
Births to Teens							
Births to Young Teens (ages 15-17)	23.3 per 1000 girls 15-17, 1994-1996				12.2%	20.5 per 1000 girls 15-17, 2001-2003	18
Births to Older Teens (ages 18-19)	111.1 per 1000 girls 18-19, 1994-1996				48.9%	56.7 per 1000 girls 18-19, 2001-2003	7
Births to Teens (ages 15-19)	46.1 per 1000 girls 15-19, 1994-1996				26.8%	33.8 per 1000 girls 15-19, 2001-2003	9
Child Abuse & Neglect	7.9 confirmed per 1000 children, FY 1995-1997	-109.0%				16.5 confirmed per 1000 children, FY 2002-04	39
High School Dropouts	0.4% of grades 9-12, SY 2001/02-2003/04				###	<i>Trend data available in future Factbooks</i>	N/A
Juvenile Violent Crime Arrests	0.0 per 100,000 youths 10-17, 1994-1996				###	0.0 per 100,000 youths 10-17, 2001-2003	tied for 1
Mortality							
Infant Mortality (under age 1)	0.0 per 1000 live births, 1994-1996				###	18.7 per 1000 live births, 2001-2003	75
Child Death (age 1-14)	89.6 per 100,000 children 1-14, 1994-1996	-39.0%				124.5 per 100,000 children 1-14, 2001-2003	76
Teen Death (ages 15-19)	0.0 per 100,000 teens 15-19, 1994-1996				###	0.0 per 100,000 teens 15-19, 2001-2003	tied for 1
Child and Teen Death (ages 1-19)	66.1 per 100,000 youth 1-19, 1994-1996	-26.1%				83.4 per 100,000 youth 1-19, 2001-2003	72
Economic Cluster	36 Economic Index, 1994-1996				11.1%	32 Economic Index, 2001-2003	2

Change of more than 110%—positive or negative—are graphed with broken bar

■ state change

■ county change

= zero base - cannot calculate change

County Rank (1 = best) (77 = worst)

County Health Indicators

Health Resources

The following medical facilities are physically located within Harper County

YES	Hospital serving general population
NO	Hospital specializing in care for specific population, procedure or condition
YES	County or City/County Health Department
NO	Non-health dept. community-based clinic receiving selected federal funding
NO	Community Health Center
NO	Clinic or health center serving native population
NO	Community Mental Health Center

The following medical practitioners are located in Harper County

4	Physicians	(1.2 per 1000 people)
57	Nurses	(16.5 per 1000 people)
1	Dentists	(0.3 per 1000 people)

The following community partnerships serve Harper County

YES	Turning Point
NO	Systems of Care

Health Status

Rate		Rank
62.6%	Birth mothers received adequate prenatal care	37
54.6/10,000	Infants/Toddlers exposed to lead	74
72.7%	Two-year olds immunized	tied for 11
77.2%	Eligible children covered by Medicaid/SCHIP	63
88.5/100,000	Juvenile arrests for drug & alcohol related offenses	5
41.7/100,000	Children & teen deaths from disease	76

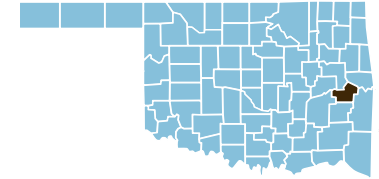
Overall Health Status Rank

62

None of Harper County is designated as a medically underserved area.



Haskell County



County Seat: Stigler

Number of Children (2003): 3,031
Children are 25.2% of the county population

Number of Poor Children (2002): 818
Child Poverty Rate (2002): 27.0%

Economic Cluster #5: Poorest

Indicator	Base Data	-	Worsened	Improved	+	Recent Data	Rank
Birthweight							
Low Birthweight (under 5½ lbs)	6.7% of live births, 1994-1996	-50.3%				10.0% of live births, 2001-2003	71
Very Low Birthweight (under 3lbs,5oz)	0.7% of live births, 1994-1996	-106.2%				1.4% of live births, 2001-2003	54
Births to Teens							
Births to Young Teens (ages 15-17)	42.2 per 1000 girls 15-17, 1994-1996				13.6%	36.4 per 1000 girls 15-17, 2001-2003	64
Births to Older Teens (ages 18-19)	175.1 per 1000 girls 18-19, 1994-1996				17.2%	145.0 per 1000 girls 18-19, 2001-2003	72
Births to Teens (ages 15-19)	83.7 per 1000 girls 15-19, 1994-1996				1.5%	82.4 per 1000 girls 15-19, 2001-2003	72
Child Abuse & Neglect	20.4 confirmed per 1000 children, FY 1995-1997	-1.9%				20.8 confirmed per 1000 children, FY 2002-04	54
High School Dropouts	3.5% of grades 9-12, SY 2001/02-2003/04					<i>Trend data available in future Factbooks</i>	N/A
Juvenile Violent Crime Arrests	98.2 per 100,000 youths 10-17, 1994-1996	-0.7%				98.9 per 100,000 youths 10-17, 2001-2003	31
Mortality							
Infant Mortality (under age 1)	17.8 per 1000 live births, 1994-1996				44.8%	9.8 per 1000 live births, 2001-2003	57
Child Death (age 1-14)	75.8 per 100,000 children 1-14, 1994-1996				62.0%	28.8 per 100,000 children 1-14, 2001-2003	37
Teen Death (ages 15-19)	39.2 per 100,000 teens 15-19, 1994-1996	-417.6%				202.7 per 100,000 teens 15-19, 2001-2003	75
Child and Teen Death (ages 1-19)	65.6 per 100,000 youth 1-19, 1994-1996	-13.4%				74.4 per 100,000 youth 1-19, 2001-2003	67
Economic Cluster	245 Economic Index, 1994-1996				5.3%	232 Economic Index, 2001-2003	65

Change of more than 110%—positive or negative—are graphed with broken bar

■ state change

■ county change

= zero base - cannot calculate change

County Rank (1 = best) (77 = worst)

County Health Indicators

Health Resources

The following medical facilities are physically located within Haskell County

YES	Hospital serving general population
NO	Hospital specializing in care for specific population, procedure or condition
YES	County or City/County Health Department
NO	Non-health dept. community-based clinic receiving selected federal funding
YES	Community Health Center
NO	Clinic or health center serving native population
YES	Community Mental Health Center

The following medical practitioners are located in Haskell County

7	Physicians	(0.6 per 1000 people)
208	Nurses	(17.7 per 1000 people)
3	Dentists	(0.3 per 1000 people)

The following community partnerships serve Haskell County

YES	Turning Point
NO	Systems of Care

Health Status

Rate		Rank
58.5%	Birth mothers received adequate prenatal care	48
21.9/10,000	Infants/Toddlers exposed to lead	70
67.9%	Two-year olds immunized	tied for 19
100.0%	Eligible children covered by Medicaid/SCHIP	tied for 1
642.6/100,000	Juvenile arrests for drug & alcohol related offenses	28
21.3/100,000	Children & teen deaths from disease	63

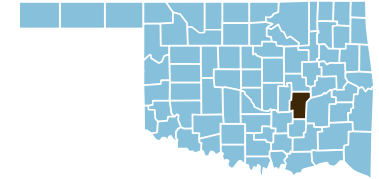
Overall Health Status Rank

41

All of Haskell County is designated as a medically underserved area.



Hughes County



County Seat: **Holdenville**

Number of Children (2003): 3,048
Children are 21.9% of the county population

Number of Poor Children (2002): 852
Child Poverty Rate (2002): 27.8%

Economic Cluster #5: Poorest

Indicator	Base Data	-	Worsened	Improved	+	Recent Data	Rank
Birthweight							
Low Birthweight (under 5½ lbs)	4.6% of live births, 1994-1996	-99.2%				9.1% of live births, 2001-2003	63
Very Low Birthweight (under 3lbs,5oz)	0.7% of live births, 1994-1996				9.1%	0.6% of live births, 2001-2003	11
Births to Teens							
Births to Young Teens (ages 15-17)	43.5 per 1000 girls 15-17, 1994-1996				26.2%	32.1 per 1000 girls 15-17, 2001-2003	50
Births to Older Teens (ages 18-19)	139.5 per 1000 girls 18-19, 1994-1996				17.4%	115.2 per 1000 girls 18-19, 2001-2003	50
Births to Teens (ages 15-19)	73.3 per 1000 girls 15-19, 1994-1996				13.1%	63.7 per 1000 girls 15-19, 2001-2003	51
Child Abuse & Neglect	11.9 confirmed per 1000 children, FY 1995-1997	-63.8%				19.5 confirmed per 1000 children, FY 2002-04	51
High School Dropouts	4.7% of grades 9-12, SY 2001/02-2003/04					<i>Trend data available in future Factbooks</i>	N/A
Juvenile Violent Crime Arrests	444.8 per 100,000 youths 10-17, 1994-1996	-13.8%				506.0 per 100,000 youths 10-17, 2001-2003	75
Mortality							
Infant Mortality (under age 1)	6.5 per 1000 live births, 1994-1996	-21.2%				7.9 per 1000 live births, 2001-2003	48
Child Death (age 1-14)	27.3 per 100,000 children 1-14, 1994-1996	-106.8%				56.5 per 100,000 children 1-14, 2001-2003	71
Teen Death (ages 15-19)	69.4 per 100,000 teens 15-19, 1994-1996	-53.9%				106.8 per 100,000 teens 15-19, 2001-2003	55
Child and Teen Death (ages 1-19)	39.2 per 100,000 youth 1-19, 1994-1996	-80.6%				70.8 per 100,000 youth 1-19, 2001-2003	64
Economic Cluster	281 Economic Index, 1994-1996				5.0%	267 Economic Index, 2001-2003	73

Change of more than 110%—positive or negative—are graphed with broken bar

■ state change

■ county change

= zero base - cannot calculate change

County Rank (1 = best) (77 = worst)

County Health Indicators

Health Resources

The following medical facilities are physically located within Hughes County

YES	Hospital serving general population
NO	Hospital specializing in care for specific population, procedure or condition
YES	County or City/County Health Department
NO	Non-health dept. community-based clinic receiving selected federal funding
NO	Community Health Center
NO	Clinic or health center serving native population
YES	Community Mental Health Center

The following medical practitioners are located in Hughes County

5	Physicians	(0.4 per 1000 people)
197	Nurses	(14.1 per 1000 people)
1	Dentists	(0.1 per 1000 people)

The following community partnerships serve Hughes County

YES	Turning Point
NO	Systems of Care

Health Status

Rate		Rank
64.5%	Birth mothers received adequate prenatal care	33
58.8/10,000	Infants/Toddlers exposed to lead	76
n/a	Two-year olds immunized	n/a
96.5%	Eligible children covered by Medicaid/SCHIP	32
713.0/100,000	Juvenile arrests for drug & alcohol related offenses	33
20.2/100,000	Children & teen deaths from disease	59

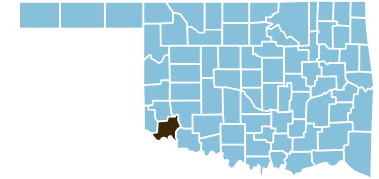
Overall Health Status Rank

Tied for 60

All of Hughes County is designated as a medically underserved area.



Jackson County



County Seat: Altus

Number of Children (2003): 7,820
Children are 28.6% of the county population

Number of Poor Children (2002): 1,572
Child Poverty Rate (2002): 20.1%

Economic Cluster #2: Wealthier

Indicator	Base Data	-	Worsened	Improved	+	Recent Data	Rank
Birthweight							
Low Birthweight (under 5½ lbs)	6.1% of live births, 1994-1996	-41.0%				8.6% of live births, 2001-2003	58
Very Low Birthweight (under 3lbs,5oz)	0.8% of live births, 1994-1996	-81.5%				1.4% of live births, 2001-2003	56
Births to Teens							
Births to Young Teens (ages 15-17)	47.4 per 1000 girls 15-17, 1994-1996				15.6%	40.0 per 1000 girls 15-17, 2001-2003	70
Births to Older Teens (ages 18-19)	126.0 per 1000 girls 18-19, 1994-1996				8.4%	115.5 per 1000 girls 18-19, 2001-2003	51
Births to Teens (ages 15-19)	78.9 per 1000 girls 15-19, 1994-1996				12.1%	69.3 per 1000 girls 15-19, 2001-2003	64
Child Abuse & Neglect	15.5 confirmed per 1000 children, FY 1995-1997				13.0%	13.5 confirmed per 1000 children, FY 2002-04	29
High School Dropouts	3.2% of grades 9-12, SY 2001/02-2003/04					<i>Trend data available in future Factbooks</i>	N/A
Juvenile Violent Crime Arrests	182.4 per 100,000 youths 10-17, 1994-1996				5.2%	173.0 per 100,000 youths 10-17, 2001-2003	53
Mortality							
Infant Mortality (under age 1)	7.7 per 1000 live births, 1994-1996				4.5%	7.4 per 1000 live births, 2001-2003	43
Child Death (age 1-14)	23.7 per 100,000 children 1-14, 1994-1996				31.7%	16.2 per 100,000 children 1-14, 2001-2003	10
Teen Death (ages 15-19)	157.7 per 100,000 teens 15-19, 1994-1996				50.5%	78.1 per 100,000 teens 15-19, 2001-2003	40
Child and Teen Death (ages 1-19)	57.0 per 100,000 youth 1-19, 1994-1996				43.7%	32.1 per 100,000 youth 1-19, 2001-2003	19
Economic Cluster	153 Economic Index, 1994-1996				38.6%	94 Economic Index, 2001-2003	22

Change of more than 110%—positive or negative—are graphed with broken bar

■ state change

■ county change

= zero base - cannot calculate change

County Rank (1 = best) (77 = worst)

County Health Indicators

Health Resources

The following medical facilities are physically located within Jackson County

YES	Hospital serving general population
YES	Hospital specializing in care for specific population, procedure or condition
YES	County or City/County Health Department
NO	Non-health dept. community-based clinic receiving selected federal funding
NO	Community Health Center
NO	Clinic or health center serving native population
YES	Community Mental Health Center

The following medical practitioners are located in Jackson County

35	Physicians	(1.3 per 1000 people)
386	Nurses	(14.1 per 1000 people)
9	Dentists	(0.3 per 1000 people)

The following community partnerships serve Jackson County

YES	Turning Point
NO	Systems of Care

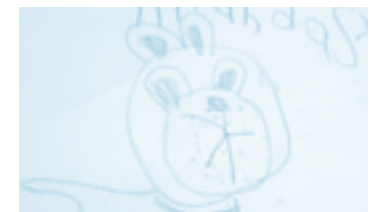
Health Status

Rate		Rank
79.3%	Birth mothers received adequate prenatal care	3
12.3/10,000	Infants/Toddlers exposed to lead	62
74.1%	Two-year olds immunized	tied for 7
75.2%	Eligible children covered by Medicaid/SCHIP	65
326.8/100,000	Juvenile arrests for drug & alcohol related offenses	10
8.0/100,000	Children & teen deaths from disease	18

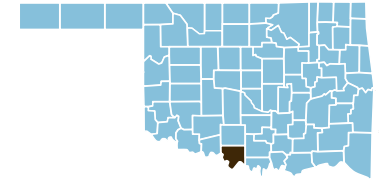
Overall Health Status Rank

13

None of Jackson County is designated as a medically underserved area.



Jefferson County



County Seat: Waurika

Number of Children (2003): 1,487
Children are 22.8% of the county population

Number of Poor Children (2002): 376
Child Poverty Rate (2002): 25.5%

Economic Cluster #5: Poorest

Indicator	Base Data	-	Worsened	Improved	+	Recent Data	Rank
Birthweight							
Low Birthweight (under 5½ lbs)	5.7% of live births, 1994-1996	-68.4%				9.6% of live births, 2001-2003	68
Very Low Birthweight (under 3lbs,5oz)	1.6% of live births, 1994-1996				43.9%	0.9% of live births, 2001-2003	18
Births to Teens							
Births to Young Teens (ages 15-17)	23.2 per 1000 girls 15-17, 1994-1996	-22.2%				28.4 per 1000 girls 15-17, 2001-2003	36
Births to Older Teens (ages 18-19)	108.0 per 1000 girls 18-19, 1994-1996	-11.7%				120.6 per 1000 girls 18-19, 2001-2003	58
Births to Teens (ages 15-19)	47.9 per 1000 girls 15-19, 1994-1996	-31.9%				63.2 per 1000 girls 15-19, 2001-2003	47
Child Abuse & Neglect	16.6 confirmed per 1000 children, FY 1995-1997	-28.7%				21.4 confirmed per 1000 children, FY 2002-04	57
High School Dropouts	2.7% of grades 9-12, SY 2001/02-2003/04					<i>Trend data available in future Factbooks</i>	N/A
Juvenile Violent Crime Arrests	40.1 per 100,000 youths 10-17, 1994-1996	-2386.1%				995.7 per 100,000 youths 10-17, 2001-2003	77
Mortality							
Infant Mortality (under age 1)	0.0 per 1000 live births, 1994-1996				###	4.4 per 1000 live births, 2001-2003	13
Child Death (age 1-14)	101.9 per 100,000 children 1-14, 1994-1996				100.0%	0.0 per 100,000 children 1-14, 2001-2003	tied for 1
Teen Death (ages 15-19)	197.4 per 100,000 teens 15-19, 1994-1996				100.0%	0.0 per 100,000 teens 15-19, 2001-2003	tied for 1
Child and Teen Death (ages 1-19)	128.6 per 100,000 youth 1-19, 1994-1996				100.0%	0.0 per 100,000 youth 1-19, 2001-2003	tied for 1
Economic Cluster	190 Economic Index, 1994-1996	-21.6%				231 Economic Index, 2001-2003	tied for 63

Change of more than 110%—positive or negative—are graphed with broken bar

■ state change

■ county change

= zero base - cannot calculate change

County Rank (1 = best) (77 = worst)

County Health Indicators

Health Resources

The following medical facilities are physically located within Jefferson County

YES	Hospital serving general population
NO	Hospital specializing in care for specific population, procedure or condition
YES	County or City/County Health Department
NO	Non-health dept. community-based clinic receiving selected federal funding
NO	Community Health Center
NO	Clinic or health center serving native population
NO	Community Mental Health Center

The following medical practitioners are located in Jefferson County

4	Physicians	(0.6 per 1000 people)
90	Nurses	(13.7 per 1000 people)
1	Dentists	(0.2 per 1000 people)

The following community partnerships serve Jefferson County

NO	Turning Point
NO	Systems of Care

Health Status

Rate	Rank
63.8%	35
45.1/10,000	73
63.2	tied for 47
100.0%	tied for 1
758.7/100,000	36
0.0/100,000	tied for 1

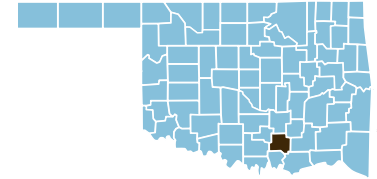
Overall Health Status Rank

21

All of Jefferson County is designated as a medically underserved area.



Johnston County



County Seat: Tishomingo

Number of Children (2003): 2,521
Children are 24.0% of the county population

Number of Poor Children (2002): 623
Child Poverty Rate (2002): 24.7%

Economic Cluster #5: Poorest

Indicator	Base Data	-	Worsened	Improved	+	Recent Data	Rank
Birthweight							
Low Birthweight (under 5½ lbs)	8.0% of live births, 1994-1996				22.6%	6.2% of live births, 2001-2003	13
Very Low Birthweight (under 3lbs,5oz)	0.8% of live births, 1994-1996	-39.1%				1.1% of live births, 2001-2003	31
Births to Teens							
Births to Young Teens (ages 15-17)	39.3 per 1000 girls 15-17, 1994-1996				15.6%	33.1 per 1000 girls 15-17, 2001-2003	54
Births to Older Teens (ages 18-19)	68.5 per 1000 girls 18-19, 1994-1996	-78.4%				122.2 per 1000 girls 18-19, 2001-2003	60
Births to Teens (ages 15-19)	52.3 per 1000 girls 15-19, 1994-1996	-34.7%				70.4 per 1000 girls 15-19, 2001-2003	65
Child Abuse & Neglect	13.2 confirmed per 1000 children, FY 1995-1997	-85.0%				24.4 confirmed per 1000 children, FY 2002-04	68
High School Dropouts	2.9% of grades 9-12, SY 2001/02-2003/04					<i>Trend data available in future Factbooks</i>	N/A
Juvenile Violent Crime Arrests	178.8 per 100,000 youths 10-17, 1994-1996				6.0%	168.1 per 100,000 youths 10-17, 2001-2003	52
Mortality							
Infant Mortality (under age 1)	15.5 per 1000 live births, 1994-1996				100.0%	0.0 per 1000 live births, 2001-2003	tied for 1
Child Death (age 1-14)	31.6 per 100,000 children 1-14, 1994-1996	-8.1%				34.2 per 100,000 children 1-14, 2001-2003	45
Teen Death (ages 15-19)	112.1 per 100,000 teens 15-19, 1994-1996	-45.0%				162.5 per 100,000 teens 15-19, 2001-2003	73
Child and Teen Death (ages 1-19)	55.5 per 100,000 youth 1-19, 1994-1996	-30.0%				72.2 per 100,000 youth 1-19, 2001-2003	66
Economic Cluster	260 Economic Index, 1994-1996				11.9%	229 Economic Index, 2001-2003	62

Change of more than 110%—positive or negative—are graphed with broken bar

■ state change

■ county change

= zero base - cannot calculate change

County Rank (1 = best) (77 = worst)

County Health Indicators

Health Resources

The following medical facilities are physically located within Johnston County

YES	Hospital serving general population
NO	Hospital specializing in care for specific population, procedure or condition
YES	County or City/County Health Department
NO	Non-health dept. community-based clinic receiving selected federal funding
YES	Community Health Center
YES	Clinic or health center serving native population
YES	Community Mental Health Center

The following medical practitioners are located in Johnston County

3	Physicians	(0.3 per 1000 people)
156	Nurses	(14.9 per 1000 people)
4	Dentists	(0.4 per 1000 people)

The following community partnerships serve Johnston County

YES	Turning Point
NO	Systems of Care

Health Status

Rate	Rank
57.9%	51
0.0/10,000	tied for 1
46.3%	75
95.6%	35
448.3/100,000	18
24.1/100,000	69

Birth mothers received adequate prenatal care
Infants/Toddlers exposed to lead
Two-year olds immunized
Eligible children covered by Medicaid/SCHIP
Juvenile arrests for drug & alcohol related offenses
Children & teen deaths from disease

Overall Health Status Rank

Tied for 53



All of Johnston County is designated as a medically underserved area.