

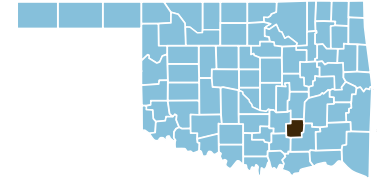
Coal County

County Seat: Coalgate

Number of Children (2003): 1,525
Children are 25.6% of the county population

Number of Poor Children (2002): 401
Child Poverty Rate (2002): 26.4%

Economic Cluster #5: Poorest



Indicator	Base Data	-	Worsened	Improved	+	Recent Data	Rank
Birthweight							
Low Birthweight (under 5½ lbs)	6.5% of live births, 1994-1996	-10.9%				7.2% of live births, 2001-2003	27
Very Low Birthweight (under 3lbs,5oz)	1.7% of live births, 1994-1996				26.6%	1.3% of live births, 2001-2003	45
Births to Teens							
Births to Young Teens (ages 15-17)	30.9 per 1000 girls 15-17, 1994-1996				16.9%	25.6 per 1000 girls 15-17, 2001-2003	33
Births to Older Teens (ages 18-19)	139.9 per 1000 girls 18-19, 1994-1996				3.1%	135.6 per 1000 girls 18-19, 2001-2003	67
Births to Teens (ages 15-19)	67.2 per 1000 girls 15-19, 1994-1996				0.2%	67.1 per 1000 girls 15-19, 2001-2003	58
Child Abuse & Neglect	21.0 confirmed per 1000 children, FY 1995-1997	-135.9%				49.5 confirmed per 1000 children, FY 2002-04	77
High School Dropouts	2.1% of grades 9-12, SY 2001/02-2003/04					<i>Trend data available in future Factbooks</i>	N/A
Juvenile Violent Crime Arrests	0.0 per 100,000 youths 10-17, 1994-1996				###	136.9 per 100,000 youths 10-17, 2001-2003	44
Mortality							
Infant Mortality (under age 1)	13.0 per 1000 live births, 1994-1996	-30.5%				17.0 per 1000 live births, 2001-2003	74
Child Death (age 1-14)	54.0 per 100,000 children 1-14, 1994-1996				100.0%	0.0 per 100,000 children 1-14, 2001-2003	tied for 1
Teen Death (ages 15-19)	68.7 per 100,000 teens 15-19, 1994-1996	-11.8%				76.9 per 100,000 teens 15-19, 2001-2003	39
Child and Teen Death (ages 1-19)	58.1 per 100,000 youth 1-19, 1994-1996				65.2%	20.2 per 100,000 youth 1-19, 2001-2003	4
Economic Cluster	261 Economic Index, 1994-1996	-5.4%				275 Economic Index, 2001-2003	74

Change of more than 110%—positive or negative—are graphed with broken bar

■ state change

■ county change

= zero base - cannot calculate change

County Rank (1 = best) (77 = worst)

County Health Indicators

Health Resources

The following medical facilities are physically located within Coal County

YES	Hospital serving general population
NO	Hospital specializing in care for specific population, procedure or condition
YES	County or City/County Health Department
NO	Non-health dept. community-based clinic receiving selected federal funding
NO	Community Health Center
NO	Clinic or health center serving native population
NO	Community Mental Health Center

The following medical practitioners are located in Coal County

3	Physicians	(0.5 per 1000 people)
88	Nurses	(14.9 per 1000 people)
0	Dentists	(0.0 per 1000 people)

The following community partnerships serve Coal County

YES	Turning Point
NO	Systems of Care

Health Status

Rate		Rank
62.0%	Birth mothers received adequate prenatal care	40
0.0/10,000	Infants/Toddlers exposed to lead	tied for 1
75.0%	Two-year olds immunized	tied for 4
98.9%	Eligible children covered by Medicaid/SCHIP	23
912.8/100,000	Juvenile arrests for drug & alcohol related offenses	47
0.0/100,000	Children & teen deaths from disease	tied for 1

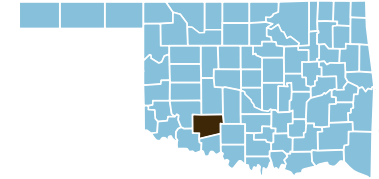
Overall Health Status Rank

1

All of Coal County is designated as a medically underserved area.



Comanche County



County Seat: Lawton

Number of Children (2003): 31,331

Number of Poor Children (2002): 6,114

Economic Cluster #3: Middle

Children are 27.5% of the county population

Child Poverty Rate (2002): 19.6%

Indicator	Base Data	-	Worsened	Improved	+	Recent Data	Rank
Birthweight							
Low Birthweight (under 5½ lbs)	7.8% of live births, 1994-1996	-15.0%				8.9% of live births, 2001-2003	62
Very Low Birthweight (under 3lbs,5oz)	1.5% of live births, 1994-1996				33.9%	1.0% of live births, 2001-2003	22
Births to Teens							
Births to Young Teens (ages 15-17)	44.5 per 1000 girls 15-17, 1994-1996				30.5%	30.9 per 1000 girls 15-17, 2001-2003	47
Births to Older Teens (ages 18-19)	141.8 per 1000 girls 18-19, 1994-1996				4.3%	135.8 per 1000 girls 18-19, 2001-2003	68
Births to Teens (ages 15-19)	83.2 per 1000 girls 15-19, 1994-1996				10.9%	74.2 per 1000 girls 15-19, 2001-2003	69
Child Abuse & Neglect	9.4 confirmed per 1000 children, FY 1995-1997	-30.1%				12.2 confirmed per 1000 children, FY 2002-04	24
High School Dropouts	3.8% of grades 9-12, SY 2001/02-2003/04					<i>Trend data available in future Factbooks</i>	N/A
Juvenile Violent Crime Arrests	535.9 per 100,000 youths 10-17, 1994-1996				27.0%	391.0 per 100,000 youths 10-17, 2001-2003	71
Mortality							
Infant Mortality (under age 1)	9.1 per 1000 live births, 1994-1996				22.7%	7.1 per 1000 live births, 2001-2003	35
Child Death (age 1-14)	29.8 per 100,000 children 1-14, 1994-1996				17.5%	24.6 per 100,000 children 1-14, 2001-2003	27
Teen Death (ages 15-19)	67.3 per 100,000 teens 15-19, 1994-1996				12.5%	58.9 per 100,000 teens 15-19, 2001-2003	25
Child and Teen Death (ages 1-19)	39.5 per 100,000 youth 1-19, 1994-1996				13.1%	34.3 per 100,000 youth 1-19, 2001-2003	21
Economic Cluster	164 Economic Index, 1994-1996				29.3%	116 Economic Index, 2001-2003	tied for 24

Change of more than 110%—positive or negative—are graphed with broken bar

■ state change

■ county change

= zero base - cannot calculate change

County Rank (1 = best) (77 = worst)

County Health Indicators

Health Resources

The following medical facilities are physically located within **Comanche County**

YES	Hospital serving general population
YES	Hospital specializing in care for specific population, procedure or condition
YES	County or City/County Health Department
NO	Non-health dept. community-based clinic receiving selected federal funding
NO	Community Health Center
YES	Clinic or health center serving native population
YES	Community Mental Health Center

The following medical practitioners are located in **Comanche County**

210	Physicians	(1.9 per 1000 people)
1,277	Nurses	(11.3 per 1000 people)
48	Dentists	(0.4 per 1000 people)

The following community partnerships serve **Comanche County**

YES	Turning Point
YES	Systems of Care

Health Status

Rate		Rank
68.4%	Birth mothers received adequate prenatal care	25
1.0/10,000	Infants/Toddlers exposed to lead	36
50.4%*	Two-year olds immunized	70
66.8%	Eligible children covered by Medicaid/SCHIP	71
468.2/100,000	Juvenile arrests for drug & alcohol related offenses	21
14.7/100,000	Children & teen deaths from disease	44

*2003 data displayed. May be low due to vaccine shortage.

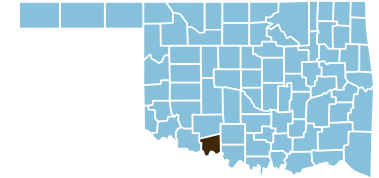
Overall Health Status Rank

Tied for 63

Part of **Comanche County** is designated as a medically underserved area.



Cotton County



County Seat: Walters

Number of Children (2003): 1,601
Children are 24.3% of the county population

Number of Poor Children (2002): 311
Child Poverty Rate (2002): 19.3%

Economic Cluster #3: Middle

Indicator	Base Data	-	Worsened	Improved	+	Recent Data	Rank
Birthweight							
Low Birthweight (under 5½ lbs)	5.7% of live births, 1994-1996				0.3%	5.7% of live births, 2001-2003	9
Very Low Birthweight (under 3lbs,5oz)	1.2% of live births, 1994-1996	-79.0%				2.2% of live births, 2001-2003	73
Births to Teens							
Births to Young Teens (ages 15-17)	35.9 per 1000 girls 15-17, 1994-1996				31.3%	24.7 per 1000 girls 15-17, 2001-2003	31
Births to Older Teens (ages 18-19)	131.6 per 1000 girls 18-19, 1994-1996				18.0%	107.9 per 1000 girls 18-19, 2001-2003	37
Births to Teens (ages 15-19)	65.8 per 1000 girls 15-19, 1994-1996				15.4%	55.7 per 1000 girls 15-19, 2001-2003	36
Child Abuse & Neglect	8.9 confirmed per 1000 children, FY 1995-1997	-118.7%				19.4 confirmed per 1000 children, FY 2002-04	50
High School Dropouts	1.2% of grades 9-12, SY 2001/02-2003/04					<i>Trend data available in future Factbooks</i>	N/A
Juvenile Violent Crime Arrests	210.8 per 100,000 youths 10-17, 1994-1996	-29.3%				272.5 per 100,000 youths 10-17, 2001-2003	62
Mortality							
Infant Mortality (under age 1)	12.1 per 1000 live births, 1994-1996				28.4%	8.7 per 1000 live births, 2001-2003	54
Child Death (age 1-14)	24.4 per 100,000 children 1-14, 1994-1996				100.0%	0.0 per 100,000 children 1-14, 2001-2003	tied for 1
Teen Death (ages 15-19)	206.6 per 100,000 teens 15-19, 1994-1996				63.7%	75.0 per 100,000 teens 15-19, 2001-2003	34
Child and Teen Death (ages 1-19)	72.0 per 100,000 youth 1-19, 1994-1996				72.4%	19.9 per 100,000 youth 1-19, 2001-2003	3
Economic Cluster	170 Economic Index, 1994-1996				16.5%	142 Economic Index, 2001-2003	31

Change of more than 110%—positive or negative—are graphed with broken bar

■ state change

■ county change

= zero base - cannot calculate change

County Rank (1 = best) (77 = worst)

County Health Indicators

Health Resources

The following medical facilities are physically located within Cotton County

NO	Hospital serving general population
NO	Hospital specializing in care for specific population, procedure or condition
YES	County or City/County Health Department
NO	Non-health dept. community-based clinic receiving selected federal funding
NO	Community Health Center
NO	Clinic or health center serving native population
NO	Community Mental Health Center

The following medical practitioners are located in Cotton County

3	Physicians	(0.5 per 1000 people)
72	Nurses	(11.1 per 1000 people)
0	Dentists	(0.0 per 1000 people)

The following community partnerships serve Cotton County

NO	Turning Point
NO	Systems of Care

Health Status

Rate		Rank
77.1%	Birth mothers received adequate prenatal care	7
0.0/10,000	Infants/Toddlers exposed to lead	tied for 1
56.1%	Two-year olds immunized	tied for 63
72.4%	Eligible children covered by Medicaid/SCHIP	66
590.4/100,000	Juvenile arrests for drug & alcohol related offenses	26
19.9/100,000	Children & teen deaths from disease	58

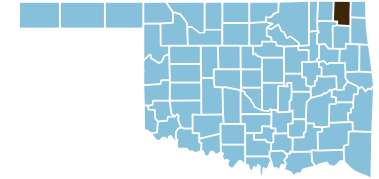
Overall Health Status Rank

Tied for 38



All of Cotton County is designated as a medically underserved area.

Craig County



County Seat: Vinita

Number of Children (2003): 3,482

Number of Poor Children (2002): 726

Economic Cluster #4: Poorer

Children are 23.4% of the county population

Child Poverty Rate (2002): 20.8%

Indicator	Base Data	-	Worsened	Improved	+	Recent Data	Rank
Birthweight Low Birthweight (under 5½ lbs) Very Low Birthweight (under 3lbs,5oz)	7.0% of live births, 1994-1996	-8.1%				7.6% of live births, 2001-2003	38
	2.0% of live births, 1994-1996				58.0%	0.8% of live births, 2001-2003	16
Births to Teens Births to Young Teens (ages 15-17) Births to Older Teens (ages 18-19)	32.0 per 1000 girls 15-17, 1994-1996				3.4%	30.9 per 1000 girls 15-17, 2001-2003	46
	138.0 per 1000 girls 18-19, 1994-1996				10.1%	124.1 per 1000 girls 18-19, 2001-2003	63
Births to Teens (ages 15-19)	68.2 per 1000 girls 15-19, 1994-1996				1.9%	66.9 per 1000 girls 15-19, 2001-2003	57
	8.8 confirmed per 1000 children, FY 1995-1997	-108.4%				18.4 confirmed per 1000 children, FY 2002-04	46
Child Abuse & Neglect	2.4% of grades 9-12, SY 2001/02-2003/04					<i>Trend data available in future Factbooks</i>	N/A
High School Dropouts	126.3 per 100,000 youths 10-17, 1994-1996	-59.2%				201.1 per 100,000 youths 10-17, 2001-2003	55
Juvenile Violent Crime Arrests	14.0 per 1000 live births, 1994-1996				64.0%	5.0 per 1000 live births, 2001-2003	17
	39.3 per 100,000 children 1-14, 1994-1996				36.4%	25.0 per 100,000 children 1-14, 2001-2003	29
Mortality Infant Mortality (under age 1) Child Death (age 1-14)	134.1 per 100,000 teens 15-19, 1994-1996				26.8%	98.1 per 100,000 teens 15-19, 2001-2003	50
	65.9 per 100,000 youth 1-19, 1994-1996				31.4%	45.2 per 100,000 youth 1-19, 2001-2003	39
Economic Cluster Child and Teen Death (ages 1-19)	113 Economic Index, 1994-1996	-48.7%				168 Economic Index, 2001-2003	tied for 44

Change of more than 110%—positive or negative—are graphed with broken bar

■ state change

■ county change

= zero base - cannot calculate change

County Rank (1 = best) (77 = worst)

County Health Indicators

Health Resources

The following medical facilities are physically located within **Craig County**

YES	Hospital serving general population
YES	Hospital specializing in care for specific population, procedure or condition
YES	County or City/County Health Department
NO	Non-health dept. community-based clinic receiving selected federal funding
NO	Community Health Center
NO	Clinic or health center serving native population
YES	Community Mental Health Center

The following medical practitioners are located in **Craig County**

16	Physicians	(1.1 per 1000 people)
268	Nurses	(18.4 per 1000 people)
5	Dentists	(0.3 per 1000 people)

The following community partnerships serve **Craig County**

YES	Turning Point
YES	Systems of Care

Health Status

Rate		Rank
51.7%	Birth mothers received adequate prenatal care	63
0.0/10,000	Infants/Toddlers exposed to lead	tied for 1
73.5%	Two-year olds immunized	10
100.0%	Eligible children covered by Medicaid/SCHIP	tied for 1
884.8/100,000	Juvenile arrests for drug & alcohol related offenses	43
0.0/100,000	Children & teen deaths from disease	tied for 1

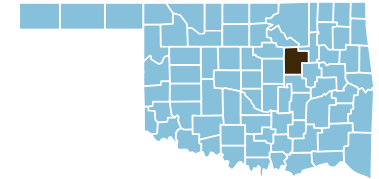
Overall Health Status Rank

2

None of **Craig County** is designated as a medically underserved area.



Creek County



County Seat: Sapulpa

Number of Children (2003): 17,758
Children are 25.8% of the county population

Number of Poor Children (2002): 3,218
Child Poverty Rate (2002): 18.1%

Economic Cluster #3: Middle

Indicator	Base Data	-	Worsened	Improved	+	Recent Data	Rank
Birthweight							
Low Birthweight (under 5½ lbs)	6.7% of live births, 1994-1996	-19.3%				8.0% of live births, 2001-2003	48
Very Low Birthweight (under 3lbs,5oz)	1.0% of live births, 1994-1996	-11.9%				1.2% of live births, 2001-2003	36
Births to Teens							
Births to Young Teens (ages 15-17)	36.9 per 1000 girls 15-17, 1994-1996				34.3%	24.2 per 1000 girls 15-17, 2001-2003	28
Births to Older Teens (ages 18-19)	128.7 per 1000 girls 18-19, 1994-1996				19.4%	103.8 per 1000 girls 18-19, 2001-2003	34
Births to Teens (ages 15-19)	66.7 per 1000 girls 15-19, 1994-1996				19.6%	53.6 per 1000 girls 15-19, 2001-2003	31
Child Abuse & Neglect	10.6 confirmed per 1000 children, FY 1995-1997	-3.8%				11.0 confirmed per 1000 children, FY 2002-04	15
High School Dropouts	2.5% of grades 9-12, SY 2001/02-2003/04					<i>Trend data available in future Factbooks</i>	N/A
Juvenile Violent Crime Arrests	270.0 per 100,000 youths 10-17, 1994-1996				53.0%	126.8 per 100,000 youths 10-17, 2001-2003	40
Mortality							
Infant Mortality (under age 1)	5.8 per 1000 live births, 1994-1996	-30.0%				7.5 per 1000 live births, 2001-2003	44
Child Death (age 1-14)	34.2 per 100,000 children 1-14, 1994-1996				29.3%	24.2 per 100,000 children 1-14, 2001-2003	25
Teen Death (ages 15-19)	153.7 per 100,000 teens 15-19, 1994-1996				0.2%	153.4 per 100,000 teens 15-19, 2001-2003	72
Child and Teen Death (ages 1-19)	66.2 per 100,000 youth 1-19, 1994-1996				9.9%	59.6 per 100,000 youth 1-19, 2001-2003	57
Economic Cluster	126 Economic Index, 1994-1996				7.9%	116 Economic Index, 2001-2003	tied for 24

Change of more than 110%—positive or negative—are graphed with broken bar

■ state change

■ county change

= zero base - cannot calculate change

County Rank (1 = best) (77 = worst)

County Health Indicators

Health Resources

The following medical facilities are physically located within **Creek County**

YES	Hospital serving general population
NO	Hospital specializing in care for specific population, procedure or condition
YES	County or City/County Health Department
NO	Non-health dept. community-based clinic receiving selected federal funding
NO	Community Health Center
YES	Clinic or health center serving native population
YES	Community Mental Health Center

The following medical practitioners are located in **Creek County**

42	Physicians	(0.6 per 1000 people)
658	Nurses	(9.6 per 1000 people)
14	Dentists	(0.2 per 1000 people)

The following community partnerships serve **Creek County**

YES	Turning Point
NO	Systems of Care

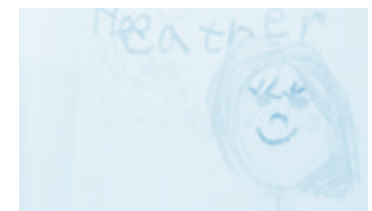
Health Status

Rate		Rank
52.4%	Birth mothers received adequate prenatal care	61
6.0/10,000	Infants/Toddlers exposed to lead	52
65.3%	Two-year olds immunized	tied for 29
97.2%	Eligible children covered by Medicaid/SCHIP	29
1,014.6/100,000	Juvenile arrests for drug & alcohol related offenses	57
8.8/100,000	Children & teen deaths from disease	21

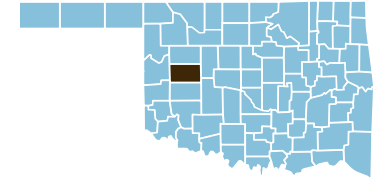
Overall Health Status Rank

Tied for 53

None of **Creek County** is designated as a medically underserved area.



Custer County



County Seat: **Arapaho**

Number of Children (2003): 5,697
Children are 22.8% of the county population

Number of Poor Children (2002): 1,239
Child Poverty Rate (2002): 21.6%

Economic Cluster #3: Middle

Indicator	Base Data	-	Worsened	Improved	+	Recent Data	Rank
Birthweight							
Low Birthweight (under 5½ lbs)	5.7% of live births, 1994-1996	-47.1%				8.4% of live births, 2001-2003	54
Very Low Birthweight (under 3lbs,5oz)	0.4% of live births, 1994-1996	-152.3%				1.0% of live births, 2001-2003	23
Births to Teens							
Births to Young Teens (ages 15-17)	34.4 per 1000 girls 15-17, 1994-1996	-2.8%				35.4 per 1000 girls 15-17, 2001-2003	62
Births to Older Teens (ages 18-19)	49.3 per 1000 girls 18-19, 1994-1996	-40.7%				69.3 per 1000 girls 18-19, 2001-2003	12
Births to Teens (ages 15-19)	42.6 per 1000 girls 15-19, 1994-1996	-23.7%				52.7 per 1000 girls 15-19, 2001-2003	29
Child Abuse & Neglect	18.2 confirmed per 1000 children, FY 1995-1997				21.1%	14.4 confirmed per 1000 children, FY 2002-04	33
High School Dropouts	3.2% of grades 9-12, SY 2001/02-2003/04					<i>Trend data available in future Factbooks</i>	N/A
Juvenile Violent Crime Arrests	212.0 per 100,000 youths 10-17, 1994-1996				30.3%	147.8 per 100,000 youths 10-17, 2001-2003	49
Mortality							
Infant Mortality (under age 1)	7.8 per 1000 live births, 1994-1996				42.7%	4.5 per 1000 live births, 2001-2003	14
Child Death (age 1-14)	6.0 per 100,000 children 1-14, 1994-1996	-796.1%				53.6 per 100,000 children 1-14, 2001-2003	68
Teen Death (ages 15-19)	83.7 per 100,000 teens 15-19, 1994-1996	-79.0%				149.9 per 100,000 teens 15-19, 2001-2003	70
Child and Teen Death (ages 1-19)	29.3 per 100,000 youth 1-19, 1994-1996	-194.0%				86.2 per 100,000 youth 1-19, 2001-2003	73
Economic Cluster	126 Economic Index, 1994-1996	-18.3%				149 Economic Index, 2001-2003	34

Change of more than 110%—positive or negative—are graphed with broken bar

■ state change

■ county change

= zero base - cannot calculate change

County Rank (1 = best) (77 = worst)

County Health Indicators

Health Resources

The following medical facilities are physically located within **Custer County**

YES	Hospital serving general population
YES	Hospital specializing in care for specific population, procedure or condition
YES	County or City/County Health Department
NO	Non-health dept. community-based clinic receiving selected federal funding
NO	Community Health Center
YES	Clinic or health center serving native population
YES	Community Mental Health Center

The following medical practitioners are located in **Custer County**

27	Physicians	(1.1 per 1000 people)
393	Nurses	(15.6 per 1000 people)
12	Dentists	(0.5 per 1000 people)

The following community partnerships serve **Custer County**

YES	Turning Point
YES	Systems of Care

Health Status

Rate		Rank
64.8%	Birth mothers received adequate prenatal care	32
0.0/10,000	Infants/Toddlers exposed to lead	tied for 1
62.1%	Two-year olds immunized	51
100.0%	Eligible children covered by Medicaid/SCHIP	tied for 1
653.0/100,000	Juvenile arrests for drug & alcohol related offenses	30
20.3/100,000	Children & teen deaths from disease	60

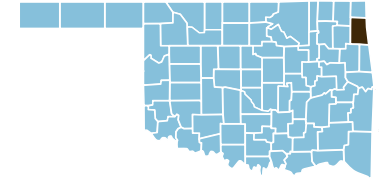
Overall Health Status Rank

19

None of **Custer County** is designated as a medically underserved area.



Delaware County



County Seat: Jay

Number of Children (2003): 9,059
Children are 23.4% of the county population

Number of Poor Children (2002): 2,322
Child Poverty Rate (2002): 25.8%

Economic Cluster #3: Middle

Indicator	Base Data	-	Worsened	Improved	+	Recent Data	Rank
Birthweight							
Low Birthweight (under 5½ lbs)	8.4% of live births, 1994-1996					8.2% of live births, 2001-2003	53
Very Low Birthweight (under 3lbs,5oz)	1.7% of live births, 1994-1996					1.2% of live births, 2001-2003	40
Births to Teens							
Births to Young Teens (ages 15-17)	38.1 per 1000 girls 15-17, 1994-1996					23.1 per 1000 girls 15-17, 2001-2003	24
Births to Older Teens (ages 18-19)	158.6 per 1000 girls 18-19, 1994-1996					129.5 per 1000 girls 18-19, 2001-2003	66
Births to Teens (ages 15-19)	78.3 per 1000 girls 15-19, 1994-1996					61.6 per 1000 girls 15-19, 2001-2003	42
Child Abuse & Neglect	7.4 confirmed per 1000 children, FY 1995-1997	-117.2%				16.1 confirmed per 1000 children, FY 2002-2004	38
High School Dropouts	4.4% of grades 9-12, SY 2001/02-2003/04					<i>Trend data available in future Factbooks</i>	N/A
Juvenile Violent Crime Arrests	9.8 per 100,000 youths 10-17, 1994-1996	-754.6%				84.0 per 100,000 youths 10-17, 2001-2003	22
Mortality							
Infant Mortality (under age 1)	7.5 per 1000 live births, 1994-1996					5.3 per 1000 live births, 2001-2003	20
Child Death (age 1-14)	28.1 per 100,000 children 1-14, 1994-1996					14.4 per 100,000 children 1-14, 2001-2003	7
Teen Death (ages 15-19)	89.7 per 100,000 teens 15-19, 1994-1996	-24.6%				111.8 per 100,000 teens 15-19, 2001-2003	58
Child and Teen Death (ages 1-19)	44.9 per 100,000 youth 1-19, 1994-1996					41.6 per 100,000 youth 1-19, 2001-2003	34
Economic Cluster	157 Economic Index, 1994-1996					147 Economic Index, 2001-2003	33

Change of more than 110%—positive or negative—are graphed with broken bar

■ state change

■ county change

= zero base - cannot calculate change

County Rank (1 = best) (77 = worst)

County Health Indicators

Health Resources

The following medical facilities are physically located within Delaware County

YES	Hospital serving general population
NO	Hospital specializing in care for specific population, procedure or condition
YES	County or City/County Health Department
NO	Non-health dept. community-based clinic receiving selected federal funding
NO	Community Health Center
YES	Clinic or health center serving native population
YES	Community Mental Health Center

The following medical practitioners are located in Delaware County

38	Physicians	(1.0 per 1000 people)
337	Nurses	(8.9 per 1000 people)
19	Dentists	(0.5 per 1000 people)

The following community partnerships serve Delaware County

NO	Turning Point
YES	Systems of Care

Health Status

Rate		Rank
55.2%	Birth mothers received adequate prenatal care	57
8.0/10,000	Infants/Toddlers exposed to lead	57
61.2%	Two-year olds immunized	52
92.1%	Eligible children covered by Medicaid/SCHIP	43
915.9/100,000	Juvenile arrests for drug & alcohol related offenses	48
17.3/100,000	Children & teen deaths from disease	51

Overall Health Status Rank

75

All of Delaware County is designated as a medically underserved area.

