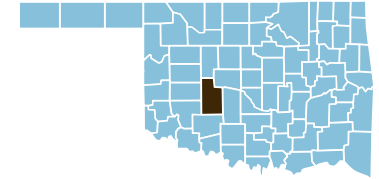


# Caddo County



County Seat: Anadarko

Number of Children (2003): 8,156  
Children are 27.1% of the county population

Number of Poor Children (2002): 2,300  
Child Poverty Rate (2002): 28.5%

Economic Cluster #5: Poorest

Indicator	Base Data	-	Worsened	Improved	+	Recent Data	Rank
<b>Birthweight</b> Low Birthweight (under 5½ lbs) Very Low Birthweight (under 3lbs,5oz)	6.7% of live births, 1994-1996				2.7%	6.5% of live births, 2001-2003	19
	0.5% of live births, 1994-1996	-264.3%				1.8% of live births, 2001-2003	69
<b>Births to Teens</b> Births to Young Teens (ages 15-17) Births to Older Teens (ages 18-19)	51.6 per 1000 girls 15-17, 1994-1996				34.8%	33.7 per 1000 girls 15-17, 2001-2003	58
	134.7 per 1000 girls 18-19, 1994-1996				13.6%	116.3 per 1000 girls 18-19, 2001-2003	53
<b>Child Abuse &amp; Neglect</b> Births to Teens (ages 15-19) Child Abuse & Neglect	80.2 per 1000 girls 15-19, 1994-1996				20.7%	63.6 per 1000 girls 15-19, 2001-2003	50
	25.4 confirmed per 1000 children, FY 1995-1997				53.5%	11.8 confirmed per 1000 children, FY 2002-04	20
<b>High School Dropouts</b> Juvenile Violent Crime Arrests	2.7% of grades 9-12, SY 2001/02-2003/04					<i>Trend data available in future Factbooks</i>	N/A
	227.4 per 100,000 youths 10-17, 1994-1996				35.8%	145.9 per 100,000 youths 10-17, 2001-2003	48
<b>Mortality</b> Infant Mortality (under age 1) Child Death (age 1-14) Teen Death (ages 15-19) Child and Teen Death (ages 1-19)	6.5 per 1000 live births, 1994-1996	-101.9%				13.2 per 1000 live births, 2001-2003	70
	30.0 per 100,000 children 1-14, 1994-1996	-27.1%				38.1 per 100,000 children 1-14, 2001-2003	53
	269.2 per 100,000 teens 15-19, 1994-1996				62.3%	101.4 per 100,000 teens 15-19, 2001-2003	52
	92.4 per 100,000 youth 1-19, 1994-1996				38.1%	57.1 per 100,000 youth 1-19, 2001-2003	54
<b>Economic Cluster</b>	239 Economic Index, 1994-1996	-3.3%				247 Economic Index, 2001-2003	67

Change of more than 110%—positive or negative—are graphed with broken bar

■ state change

■ county change

### = zero base - cannot calculate change

County Rank (1 = best) (77 = worst)

## County Health Indicators

### Health Resources

The following medical facilities are physically located within Caddo County

YES	Hospital serving general population
NO	Hospital specializing in care for specific population, procedure or condition
YES	County or City/County Health Department
NO	Non-health dept. community-based clinic receiving selected federal funding
YES	Community Health Center
YES	Clinic or health center serving native population
YES	Community Mental Health Center

The following medical practitioners are located in Caddo County

18	Physicians	( 0.6 per 1000 people)
377	Nurses	( 12.6 per 1000 people)
4	Dentists	( 0.1 per 1000 people)

The following community partnerships serve Caddo County

YES	Turning Point
NO	Systems of Care

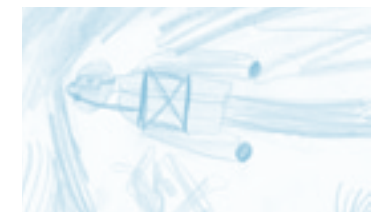
### Health Status

Rate		Rank
57.3%	Birth mothers received adequate prenatal care	52
4.5/10,000	Infants/Toddlers exposed to lead	48
n/a	Two-year olds immunized	n/a
78.9%	Eligible children covered by Medicaid/SCHIP	59
761.8/100,000	Juvenile arrests for drug & alcohol related offenses	37
19.0/100,000	Children & teen deaths from disease	57

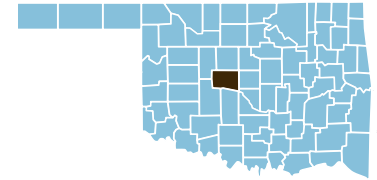
### Overall Health Status Rank

70

All of Caddo County is designated as a medically underserved area.



# Canadian County



County Seat: El Reno

Number of Children (2003): 23,888

Number of Poor Children (2002): 2,654

Economic Cluster #1: Wealthiest

Children are 25.7% of the county population

Child Poverty Rate (2002): 11.1%

Indicator	Base Data	-	Worsened	Improved	+	Recent Data	Rank
<b>Birthweight</b>							
Low Birthweight (under 5½ lbs)	4.7% of live births, 1994-1996	-40.9%				6.7% of live births, 2001-2003	20
Very Low Birthweight (under 3lbs,5oz)	0.4% of live births, 1994-1996	-111.4%				0.9% of live births, 2001-2003	20
<b>Births to Teens</b>							
Births to Young Teens (ages 15-17)	24.4 per 1000 girls 15-17, 1994-1996				43.4%	13.8 per 1000 girls 15-17, 2001-2003	10
Births to Older Teens (ages 18-19)	71.7 per 1000 girls 18-19, 1994-1996				2.6%	69.8 per 1000 girls 18-19, 2001-2003	13
Births to Teens (ages 15-19)	40.1 per 1000 girls 15-19, 1994-1996				15.3%	33.9 per 1000 girls 15-19, 2001-2003	10
<b>Child Abuse &amp; Neglect</b>	13.1 confirmed per 1000 children, FY 1995-1997				15.2%	11.1 confirmed per 1000 children, FY 2002-04	16
<b>High School Dropouts</b>	3.3% of grades 9-12, SY 2001/02-2003/04					<i>Trend data available in future Factbooks</i>	N/A
<b>Juvenile Violent Crime Arrests</b>	146.8 per 100,000 youths 10-17, 1994-1996				8.0%	135.0 per 100,000 youths 10-17, 2001-2003	43
<b>Mortality</b>							
Infant Mortality (under age 1)	3.7 per 1000 live births, 1994-1996	-95.2%				7.2 per 1000 live births, 2001-2003	36
Child Death (age 1-14)	13.9 per 100,000 children 1-14, 1994-1996	-84.5%				25.6 per 100,000 children 1-14, 2001-2003	31
Teen Death (ages 15-19)	90.1 per 100,000 teens 15-19, 1994-1996				49.8%	45.2 per 100,000 teens 15-19, 2001-2003	17
Child and Teen Death (ages 1-19)	32.7 per 100,000 youth 1-19, 1994-1996				4.4%	31.3 per 100,000 youth 1-19, 2001-2003	18
<b>Economic Cluster</b>	26 Economic Index, 1994-1996	-107.7				54 Economic Index, 2001-2003	7

Change of more than 110%—positive or negative—are graphed with broken bar

■ state change

■ county change

### = zero base - cannot calculate change

County Rank (1 = best) (77 = worst)

## County Health Indicators

### Health Resources

The following medical facilities are physically located within **Canadian County**

The following medical practitioners are located in **Canadian County**

- YES Hospital serving general population
- YES Hospital specializing in care for specific population, procedure or condition
- YES County or City/County Health Department
- NO Non-health dept. community-based clinic receiving selected federal funding
- NO Community Health Center
- YES Clinic or health center serving native population
- YES Community Mental Health Center

- 58 Physicians (0.6 per 1000 people)
- 1,440 Nurses (15.7 per 1000 people)
- 34 Dentists (0.4 per 1000 people)

The following community partnerships serve **Canadian County**

- YES Turning Point
- YES Systems of Care

### Health Status

Rate		Rank
77.1%	Birth mothers received adequate prenatal care	6
0.0/10,000	Infants/Toddlers exposed to lead	tied for 1
58.3%*	Two-year olds immunized	60
85.1%	Eligible children covered by Medicaid/SCHIP	54
767.9/100,000	Juvenile arrests for drug & alcohol related offenses	38
10.4/100,000	Children & teen deaths from disease	28

\*2003 data displayed. May be low due to vaccine shortage.

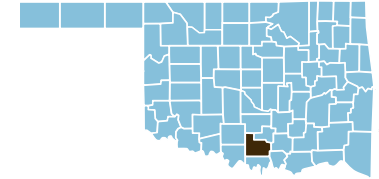
### Overall Health Status Rank

**20**

Part of **Canadian County** is designated as a medically underserved area.



# Carter County



County Seat: Ardmore

Number of Children (2003): 11,651  
Children are 25.1% of the county population

Number of Poor Children (2002): 2,526  
Child Poverty Rate (2002): 21.7%

Economic Cluster #3: Middle

Indicator	Base Data	-	Worsened	Improved	+	Recent Data	Rank
<b>Birthweight</b>							
Low Birthweight (under 5½ lbs)	7.8% of live births, 1994-1996					7.7% of live births, 2001-2003	43
Very Low Birthweight (under 3lbs,5oz)	1.0% of live births, 1994-1996	-49.0%				1.4% of live births, 2001-2003	59
<b>Births to Teens</b>							
Births to Young Teens (ages 15-17)	43.6 per 1000 girls 15-17, 1994-1996					33.8 per 1000 girls 15-17, 2001-2003	60
Births to Older Teens (ages 18-19)	161.0 per 1000 girls 18-19, 1994-1996					124.9 per 1000 girls 18-19, 2001-2003	64
Births to Teens (ages 15-19)	82.0 per 1000 girls 15-19, 1994-1996					68.0 per 1000 girls 15-19, 2001-2003	60
<b>Child Abuse &amp; Neglect</b>	15.9 confirmed per 1000 children, FY 1995-1997	-25.2%				20.0 confirmed per 1000 children, FY 2002-04	52
<b>High School Dropouts</b>	3.5% of grades 9-12, SY 2001/02-2003/04					<i>Trend data available in future Factbooks</i>	N/A
<b>Juvenile Violent Crime Arrests</b>	261.3 per 100,000 youths 10-17, 1994-1996	-21.5%				317.5 per 100,000 youths 10-17, 2001-2003	67
<b>Mortality</b>							
Infant Mortality (under age 1)	7.9 per 1000 live births, 1994-1996					5.1 per 1000 live births, 2001-2003	19
Child Death (age 1-14)	50.3 per 100,000 children 1-14, 1994-1996					33.4 per 100,000 children 1-14, 2001-2003	43
Teen Death (ages 15-19)	103.3 per 100,000 teens 15-19, 1994-1996					89.7 per 100,000 teens 15-19, 2001-2003	45
Child and Teen Death (ages 1-19)	64.0 per 100,000 youth 1-19, 1994-1996					48.7 per 100,000 youth 1-19, 2001-2003	48
<b>Economic Cluster</b>	166 Economic Index, 1994-1996					154 Economic Index, 2001-2003	tied for 38

Change of more than 110%—positive or negative—are graphed with broken bar

■ state change

■ county change

### = zero base - cannot calculate change

County Rank (1 = best) (77 = worst)

## County Health Indicators

### Health Resources

The following medical facilities are physically located within Carter County

YES	Hospital serving general population
NO	Hospital specializing in care for specific population, procedure or condition
YES	County or City/County Health Department
NO	Non-health dept. community-based clinic receiving selected federal funding
NO	Community Health Center
YES	Clinic or health center serving native population
YES	Community Mental Health Center

The following medical practitioners are located in Carter County

80	Physicians	( 1.7 per 1000 people)
655	Nurses	( 14.2 per 1000 people)
26	Dentists	( 0.6 per 1000 people)

The following community partnerships serve Carter County

YES	Turning Point
NO	Systems of Care

### Health Status

Rate		Rank
76.3%	Birth mothers received adequate prenatal care	9
5.8/10,000	Infants/Toddlers exposed to lead	50
52.8%*	Two-year olds immunized	68
99.3%	Eligible children covered by Medicaid/SCHIP	21
1,434.9/100,000	Juvenile arrests for drug & alcohol related offenses	73
5.4/100,000	Children & teen deaths from disease	15

\*2003 data displayed. May be low due to vaccine shortage.

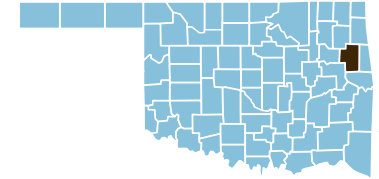
### Overall Health Status Rank

**Tied for 43**

None of Carter County is designated as a medically underserved area.



# Cherokee County



County Seat: Tahlequah

Number of Children (2003): 10,965  
Children are 25.0% of the county population

Number of Poor Children (2002): 2,876  
Child Poverty Rate (2002): 26.3%

Economic Cluster #4: Poorer

Indicator	Base Data	-	Worsened	Improved	+	Recent Data	Rank
<b>Birthweight</b>							
Low Birthweight (under 5½ lbs)	6.8% of live births, 1994-1996				4.8%	6.4% of live births, 2001-2003	15
Very Low Birthweight (under 3lbs,5oz)	0.9% of live births, 1994-1996				13.6%	0.8% of live births, 2001-2003	15
<b>Births to Teens</b>							
Births to Young Teens (ages 15-17)	44.0 per 1000 girls 15-17, 1994-1996				18.2%	36.0 per 1000 girls 15-17, 2001-2003	63
Births to Older Teens (ages 18-19)	103.6 per 1000 girls 18-19, 1994-1996				36.9%	65.4 per 1000 girls 18-19, 2001-2003	10
Births to Teens (ages 15-19)	70.0 per 1000 girls 15-19, 1994-1996				26.3%	51.6 per 1000 girls 15-19, 2001-2003	26
<b>Child Abuse &amp; Neglect</b>	14.4 confirmed per 1000 children, FY 1995-1997	-75.3%				25.3 confirmed per 1000 children, FY 2002-04	70
<b>High School Dropouts</b>	3.5% of grades 9-12, SY 2001/02-2003/04					<i>Trend data available in future Factbooks</i>	N/A
<b>Juvenile Violent Crime Arrests</b>	182.0 per 100,000 youths 10-17, 1994-1996				53.4%	84.7 per 100,000 youths 10-17, 2001-2003	23
<b>Mortality</b>							
Infant Mortality (under age 1)	5.6 per 1000 live births, 1994-1996	-15.2%				6.5 per 1000 live births, 2001-2003	32
Child Death (age 1-14)	43.1 per 100,000 children 1-14, 1994-1996				44.8%	23.8 per 100,000 children 1-14, 2001-2003	23
Teen Death (ages 15-19)	32.7 per 100,000 teens 15-19, 1994-1996	-185.3%				93.3 per 100,000 teens 15-19, 2001-2003	47
Child and Teen Death (ages 1-19)	40.2 per 100,000 youth 1-19, 1994-1996	-14.4%				46.0 per 100,000 youth 1-19, 2001-2003	42
<b>Economic Cluster</b>	243 Economic Index, 1994-1996				31.3%	167 Economic Index, 2001-2003	43

Change of more than 110%—positive or negative—are graphed with broken bar

■ state change

■ county change

### = zero base - cannot calculate change

County Rank (1 = best) (77 = worst)

## County Health Indicators

### Health Resources

The following medical facilities are physically located within Cherokee County

YES	Hospital serving general population
YES	Hospital specializing in care for specific population, procedure or condition
YES	County or City/County Health Department
NO	Non-health dept. community-based clinic receiving selected federal funding
YES	Community Health Center
YES	Clinic or health center serving native population
YES	Community Mental Health Center

The following medical practitioners are located in Cherokee County

60	Physicians	( 1.4 per 1000 people)
546	Nurses	( 12.6 per 1000 people)
21	Dentists	( 0.5 per 1000 people)

The following community partnerships serve Cherokee County

YES	Turning Point
YES	Systems of Care

### Health Status

Rate		Rank
46.7%	Birth mothers received adequate prenatal care	74
3.0/10,000	Infants/Toddlers exposed to lead	41
66.3%	Two-year olds immunized	25
91.9%	Eligible children covered by Medicaid/SCHIP	44
436.7/100,000	Juvenile arrests for drug & alcohol related offenses	16
2.7/100,000	Children & teen deaths from disease	12

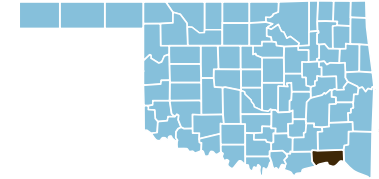
### Overall Health Status Rank

**33**

Part of Cherokee County is designated as a medically underserved area.



# Choctaw County



County Seat: Hugo

Number of Children (2003): 3,911  
Children are 25.3% of the county population

Number of Poor Children (2002): 1,268  
Child Poverty Rate (2002): 32.4%

Economic Cluster #5: Poorest

Indicator	Base Data	-	Worsened	Improved	+	Recent Data	Rank
<b>Birthweight</b>							
Low Birthweight (under 5½ lbs)	8.8% of live births, 1994-1996				8.6%	8.0% of live births, 2001-2003	50
Very Low Birthweight (under 3lbs,5oz)	1.1% of live births, 1994-1996	-10.5%				1.2% of live births, 2001-2003	37
<b>Births to Teens</b>							
Births to Young Teens (ages 15-17)	46.1 per 1000 girls 15-17, 1994-1996	-25.4%				57.8 per 1000 girls 15-17, 2001-2003	77
Births to Older Teens (ages 18-19)	155.5 per 1000 girls 18-19, 1994-1996	-0.6%				156.5 per 1000 girls 18-19, 2001-2003	75
Births to Teens (ages 15-19)	82.6 per 1000 girls 15-19, 1994-1996	-13.6%				93.8 per 1000 girls 15-19, 2001-2003	76
<b>Child Abuse &amp; Neglect</b>	12.9 confirmed per 1000 children, FY 1995-1997	-92.3%				24.7 confirmed per 1000 children, FY 2002-04	69
<b>High School Dropouts</b>	3.1% of grades 9-12, SY 2001/02-2003/04					<i>Trend data available in future Factbooks</i>	N/A
<b>Juvenile Violent Crime Arrests</b>	194.6 per 100,000 youths 10-17, 1994-1996				45.5%	106.0 per 100,000 youths 10-17, 2001-2003	36
<b>Mortality</b>							
Infant Mortality (under age 1)	5.4 per 1000 live births, 1994-1996	-176.4%				14.9 per 1000 live births, 2001-2003	72
Child Death (age 1-14)	71.7 per 100,000 children 1-14, 1994-1996				68.4%	22.6 per 100,000 children 1-14, 2001-2003	18
Teen Death (ages 15-19)	56.6 per 100,000 teens 15-19, 1994-1996	-111.0%				119.5 per 100,000 teens 15-19, 2001-2003	61
Child and Teen Death (ages 1-19)	67.7 per 100,000 youth 1-19, 1994-1996				27.3%	49.2 per 100,000 youth 1-19, 2001-2003	50
<b>Economic Cluster</b>	298 Economic Index, 1994-1996				2.3%	291 Economic Index, 2001-2003	77

Change of more than 110%—positive or negative—are graphed with broken bar

■ state change

■ county change

### = zero base - cannot calculate change

County Rank (1 = best) (77 = worst)

## County Health Indicators

### Health Resources

The following medical facilities are physically located within Choctaw County

YES	Hospital serving general population
YES	Hospital specializing in care for specific population, procedure or condition
YES	County or City/County Health Department
NO	Non-health dept. community-based clinic receiving selected federal funding
NO	Community Health Center
YES	Clinic or health center serving native population
YES	Community Mental Health Center

The following medical practitioners are located in Choctaw County

7	Physicians	( 0.5 per 1000 people)
212	Nurses	( 14.0 per 1000 people)
3	Dentists	( 0.2 per 1000 people)

The following community partnerships serve Choctaw County

YES	Turning Point
YES	Systems of Care

### Health Status

Rate		Rank
40.8%	Birth mothers received adequate prenatal care	75
17.0/10,000	Infants/Toddlers exposed to lead	68
62.3%	Two-year olds immunized	50
100.0%	Eligible children covered by Medicaid/SCHIP	tied for 1
812.7/100,000	Juvenile arrests for drug & alcohol related offenses	40
16.4/100,000	Children & teen deaths from disease	49

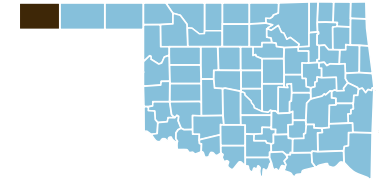
### Overall Health Status Rank

69

All of Choctaw County is designated as a medically underserved area.



# Cimarron County



County Seat: Boise City

Number of Children (2003): 757  
Children are 25.6% of the county population

Number of Poor Children (2002): 139  
Child Poverty Rate (2002): 18.2%

Economic Cluster #2: Wealthier

Indicator	Base Data	-	Worsened	Improved	+	Recent Data	Rank
<b>Birthweight</b>							
Low Birthweight (under 5½ lbs)	9.5% of live births, 1994-1996				10.4%	8.5% of live births, 2001-2003	56
Very Low Birthweight (under 3lbs,5oz)	1.1% of live births, 1994-1996				100.0%	0.0% of live births, 2001-2003	tied for 1
<b>Births to Teens</b>							
Births to Young Teens (ages 15-17)	29.3 per 1000 girls 15-17, 1994-1996				67.8%	9.4 per 1000 girls 15-17, 2001-2003	3
Births to Older Teens (ages 18-19)	102.0 per 1000 girls 18-19, 1994-1996				19.7%	82.0 per 1000 girls 18-19, 2001-2003	22
Births to Teens (ages 15-19)	50.4 per 1000 girls 15-19, 1994-1996				28.8%	35.9 per 1000 girls 15-19, 2001-2003	11
<b>Child Abuse &amp; Neglect</b>	9.0 confirmed per 1000 children, FY 1995-1997				95.2%	0.4 confirmed per 1000 children, FY 2002-04	1
<b>High School Dropouts</b>	0.9% of grades 9-12, SY 2001/02-2003/04					<i>Trend data available in future Factbooks</i>	N/A
<b>Juvenile Violent Crime Arrests</b>	82.1 per 100,000 youths 10-17, 1994-1996				100.0%	0.0 per 100,000 youths 10-17, 2001-2003	tied for 1
<b>Mortality</b>							
Infant Mortality (under age 1)	10.5 per 1000 live births, 1994-1996				100.0%	0.0 per 1000 live births, 2001-2003	tied for 1
Child Death (age 1-14)	0.0 per 100,000 children 1-14, 1994-1996				###	56.0 per 100,000 children 1-14, 2001-2003	69
Teen Death (ages 15-19)	0.0 per 100,000 teens 15-19, 1994-1996				###	142.5 per 100,000 teens 15-19, 2001-2003	69
Child and Teen Death (ages 1-19)	0.0 per 100,000 youth 1-19, 1994-1996				###	80.4 per 100,000 youth 1-19, 2001-2003	70
<b>Economic Cluster</b>	79 Economic Index, 1994-1996	-2.5%				81 Economic Index, 2001-2003	19

Change of more than 110%—positive or negative—are graphed with broken bar

■ state change

■ county change

### = zero base - cannot calculate change

County Rank (1 = best) (77 = worst)

## County Health Indicators

### Health Resources

The following medical facilities are physically located within Cimarron County

YES	Hospital serving general population
NO	Hospital specializing in care for specific population, procedure or condition
NO	County or City/County Health Department
NO	Non-health dept. community-based clinic receiving selected federal funding
NO	Community Health Center
NO	Clinic or health center serving native population
NO	Community Mental Health Center

The following medical practitioners are located in Cimarron County

2	Physicians	(0.7 per 1000 people)
24	Nurses	(8.0 per 1000 people)
0	Dentists	(0.0 per 1000 people)

The following community partnerships serve Cimarron County

YES	Turning Point
NO	Systems of Care

### Health Status

Rate		Rank
36.3%	Birth mothers received adequate prenatal care	76
0.0/10,000	Infants/Toddlers exposed to lead	tied for 1
27.3%	Two-year olds immunized	77
61.3%	Eligible children covered by Medicaid/SCHIP	74
0.0/100,000	Juvenile arrests for drug & alcohol related offenses	tied for 1
0.0/100,000	Children & teen deaths from disease	tied for 1

### Overall Health Status Rank

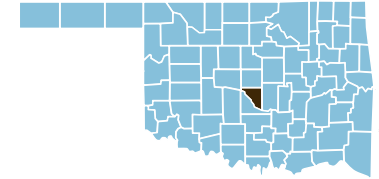
42

All of Cimarron County is designated as a medically underserved area.





# Cleveland County



County Seat: **Norman**

Number of Children (2003): 50,310  
Children are 22.9% of the county population

Number of Poor Children (2002): 6,222  
Child Poverty Rate (2002): 12.4%

Economic Cluster #1: Wealthiest

Indicator	Base Data	-	Worsened	Improved	+	Recent Data	Rank
<b>Birthweight</b>							
Low Birthweight (under 5½ lbs)	6.0% of live births, 1994-1996	-17.0%				7.0% of live births, 2001-2003	25
Very Low Birthweight (under 3lbs,5oz)	0.9% of live births, 1994-1996	-12.6%				1.0% of live births, 2001-2003	29
<b>Births to Teens</b>							
Births to Young Teens (ages 15-17)	21.8 per 1000 girls 15-17, 1994-1996				40.8%	12.9 per 1000 girls 15-17, 2001-2003	7
Births to Older Teens (ages 18-19)	41.9 per 1000 girls 18-19, 1994-1996	-3.5%				43.4 per 1000 girls 18-19, 2001-2003	5
Births to Teens (ages 15-19)	31.5 per 1000 girls 15-19, 1994-1996				12.7%	27.5 per 1000 girls 15-19, 2001-2003	2
<b>Child Abuse &amp; Neglect</b>	11.2 confirmed per 1000 children, FY 1995-1997				13.0%	9.7 confirmed per 1000 children, FY 2002-04	9
<b>High School Dropouts</b>	3.7% of grades 9-12, SY 2001/02-2003/04					<i>Trend data available in future Factbooks</i>	N/A
<b>Juvenile Violent Crime Arrests</b>	137.9 per 100,000 youths 10-17, 1994-1996				38.0%	85.5 per 100,000 youths 10-17, 2001-2003	24
<b>Mortality</b>							
Infant Mortality (under age 1)	5.7 per 1000 live births, 1994-1996	-5.6%				6.0 per 1000 live births, 2001-2003	26
Child Death (age 1-14)	27.1 per 100,000 children 1-14, 1994-1996				14.2%	23.3 per 100,000 children 1-14, 2001-2003	20
Teen Death (ages 15-19)	54.2 per 100,000 teens 15-19, 1994-1996	-24.6%				67.5 per 100,000 teens 15-19, 2001-2003	30
Child and Teen Death (ages 1-19)	35.1 per 100,000 youth 1-19, 1994-1996	-5.8%				37.2 per 100,000 youth 1-19, 2001-2003	24
<b>Economic Cluster</b>	40 Economic Index, 1994-1996	-47.5%				59 Economic Index, 2001-2003	8

Change of more than 110%—positive or negative—are graphed with broken bar

■ state change

■ county change

### = zero base - cannot calculate change

County Rank (1 = best) (77 = worst)

## County Health Indicators

### Health Resources

The following medical facilities are physically located within **Cleveland County**

YES	Hospital serving general population
YES	Hospital specializing in care for specific population, procedure or condition
YES	County or City/County Health Department
YES	Non-health dept. community-based clinic receiving selected federal funding
NO	Community Health Center
YES	Clinic or health center serving native population
YES	Community Mental Health Center

The following medical practitioners are located in **Cleveland County**

265	Physicians	( 1.2 per 1000 people)
2,386	Nurses	( 11.1 per 1000 people)
97	Dentists	( 0.4 per 1000 people)

The following community partnerships serve **Cleveland County**

YES	Turning Point
YES	Systems of Care

### Health Status

Rate		Rank
76.6%	Birth mothers received adequate prenatal care	8
1.4/10,000	Infants/Toddlers exposed to lead	37
62.4%*	Two-year olds immunized	49
100.0%	Eligible children covered by Medicaid/SCHIP	tied for 1
1,410.0/100,000	Juvenile arrests for drug & alcohol related offenses	71
13.6/100,000	Children & teen deaths from disease	37

\*2003 data displayed. May be low due to vaccine shortage.

### Overall Health Status Rank

**Tied for 25**

Part of **Cleveland County** is designated as a medically underserved area.

